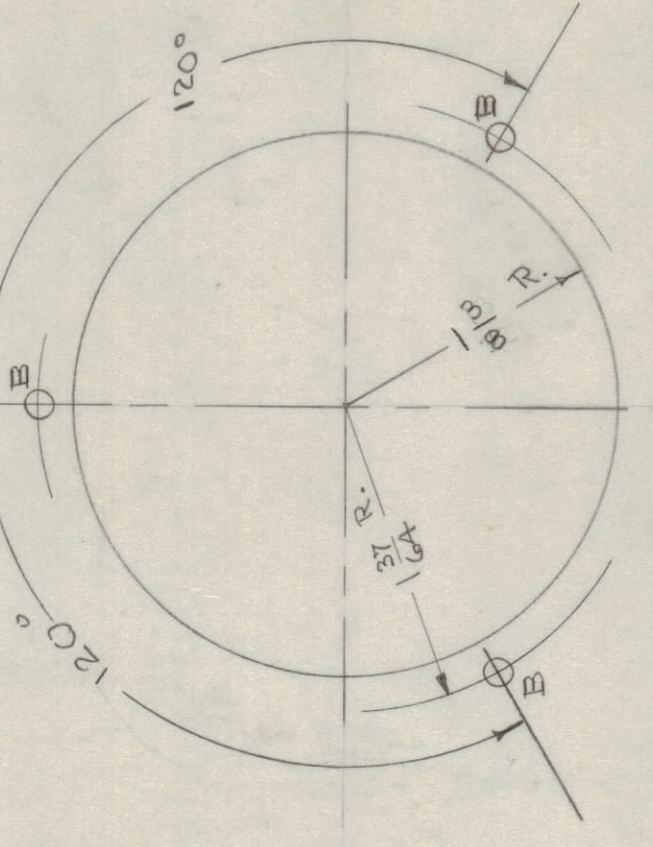


IF IT IS FOUND DESIRABLE TO CHANGE ANY TOLERANCE OR OTHER DETAIL SPECIFIED ON THIS DRAWING NOTIFY THE PRODUCTION ENGINEER. UNLESS OTHERWISE SPECIFIED, ALL DIMENSIONS ARE TO BE HONDED TO NEAREST THIRD OF AN INCH. UNLESS OTHERWISE SPECIFIED, ALL DIMENSIONS WILL BE CAUSE FOR REJECTION. REMOVE ALL BURRS AND SHARP EDGES.

MS-445 D



DETAIL A-A

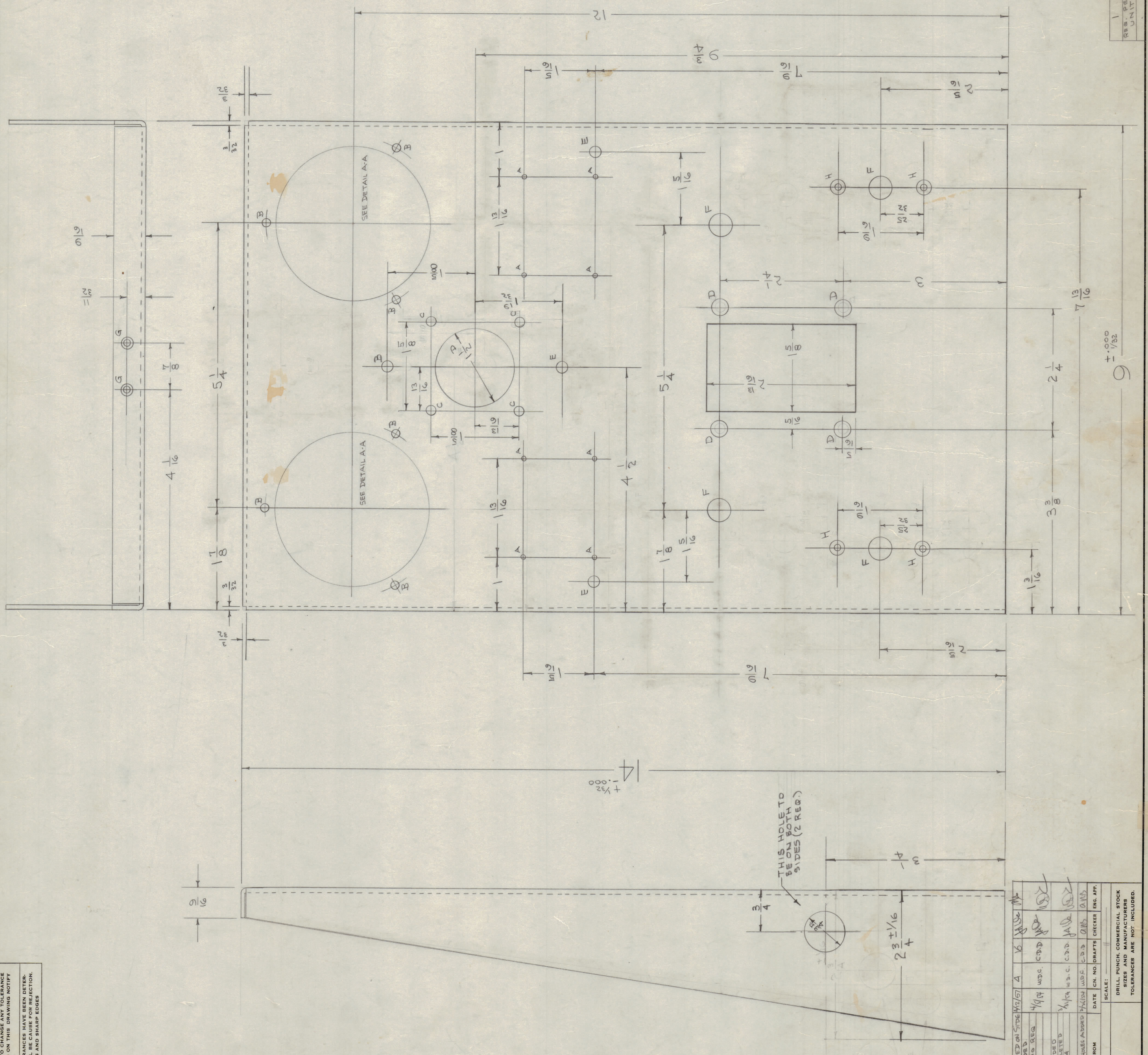
- 8 HOLES REQ.
- A- NO. 50 (0.00) DRILL
 - B- 5/32 (.156) D.
 - C- 1/16 (.062) D.
 - D- 5/16 (.312) D.
 - E- 13/64 (.203) D.
 - F- 13/32 (.406) D.
 - G- DRILL & C/SINK FOR G-32 FLAT HEAD SCREW
 - H- " " " " " " " " " " " "

NOTICE TO PERSONS RECEIVING THIS DRAWING
 THE TECHNICAL MATERIEL CORPORATION claims proprietary right in the methods disclosed herein. This drawing is issued in confidence for engineering information only and may not be reproduced or used to manufacture anything shown hereon without the permission from THE TECHNICAL MATERIEL CORPORATION to the user. This drawing is loaned for mutual assistance and is subject to recall at any time.

Property of:
 THE TECHNICAL MATERIEL CORPORATION
 MAMARONECK, NEW YORK

SPOTWELDED TO BOTTOM CHASSIS (DWG. M9-444)
 AS PER DWG. A-645.

REQ. ITEM	PART NO.	DESCRIPTION	SYMBOL
16 G. (.0625)		THE TECHNICAL MATERIEL CORP. MAMARONECK, NEW YORK	
STEEL	—	FRONT PANEL	
MATERIAL	MILD	TAC-1	
TYPE & TEMPER	#		
HEAT TREAT. SPEC.			
FINISH & SPEC. NO.			



ISSUE	ITEM	CHANGED FROM	DATE	BY	CHKD.	APP.
1	1	REV. HOLE ADD'D	11/19/41	WJS	WJS	
2	2	REV. HOLE ADD'D	1/19/42	WJS	WJS	
3	3	REV. HOLE ADD'D	1/19/42	WJS	WJS	
4	4	REV. HOLE ADD'D	1/19/42	WJS	WJS	
5	5	REV. HOLE ADD'D	1/19/42	WJS	WJS	
6	6	REV. HOLE ADD'D	1/19/42	WJS	WJS	
7	7	REV. HOLE ADD'D	1/19/42	WJS	WJS	
8	8	REV. HOLE ADD'D	1/19/42	WJS	WJS	

RES. PER UNIT	TAC-1	132	A-645	11-28-53
MODEL				
PROJECT NO.				
ASSY. NO.				
DATE				