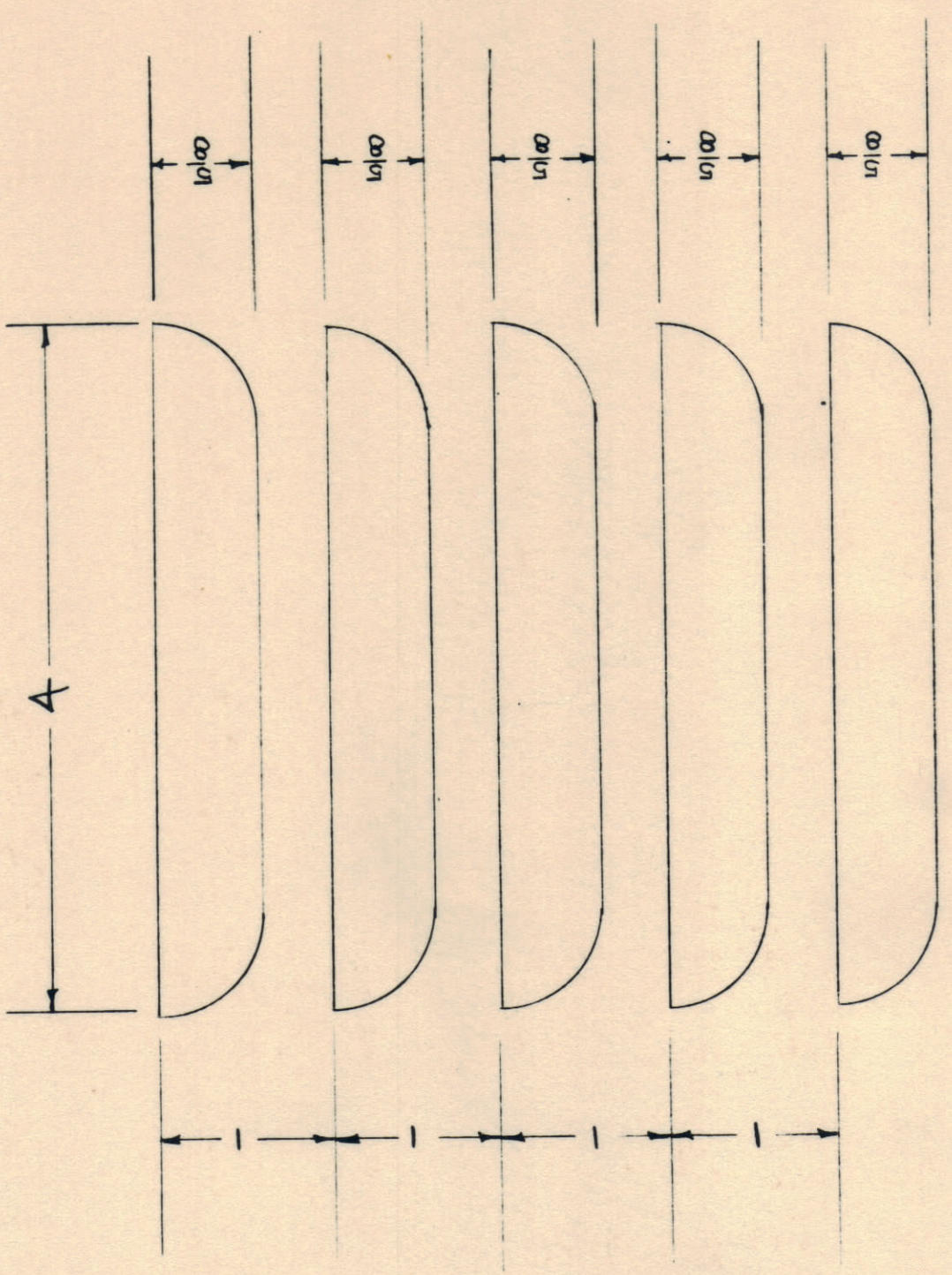
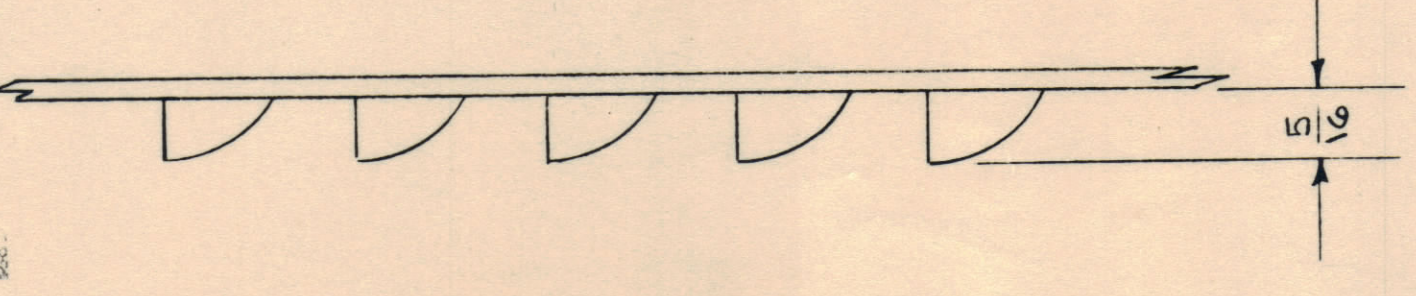


IF IT IS FOUND DESIRABLE TO CHANGE ANY TOLERANCE OR OTHER DETAIL SPECIFIED ON THIS DRAWING NOTIFY THE DESIGNER IMMEDIATELY. UNLESS OTHERWISE SPECIFIED, ALL DIMENSIONS ARE TO BE MAINTAINED WITHIN THE TOLERANCES SHOWN. UNLESS OTHERWISE SPECIFIED, ALL DIMENSIONS ARE TO BE MAINTAINED WITHIN THE TOLERANCES SHOWN. UNLESS OTHERWISE SPECIFIED, ALL DIMENSIONS ARE TO BE MAINTAINED WITHIN THE TOLERANCES SHOWN.

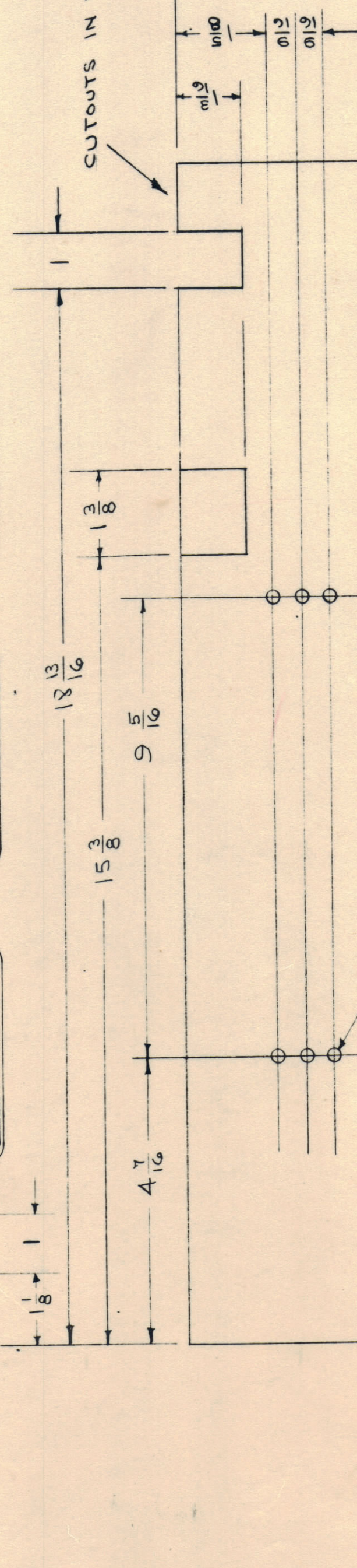
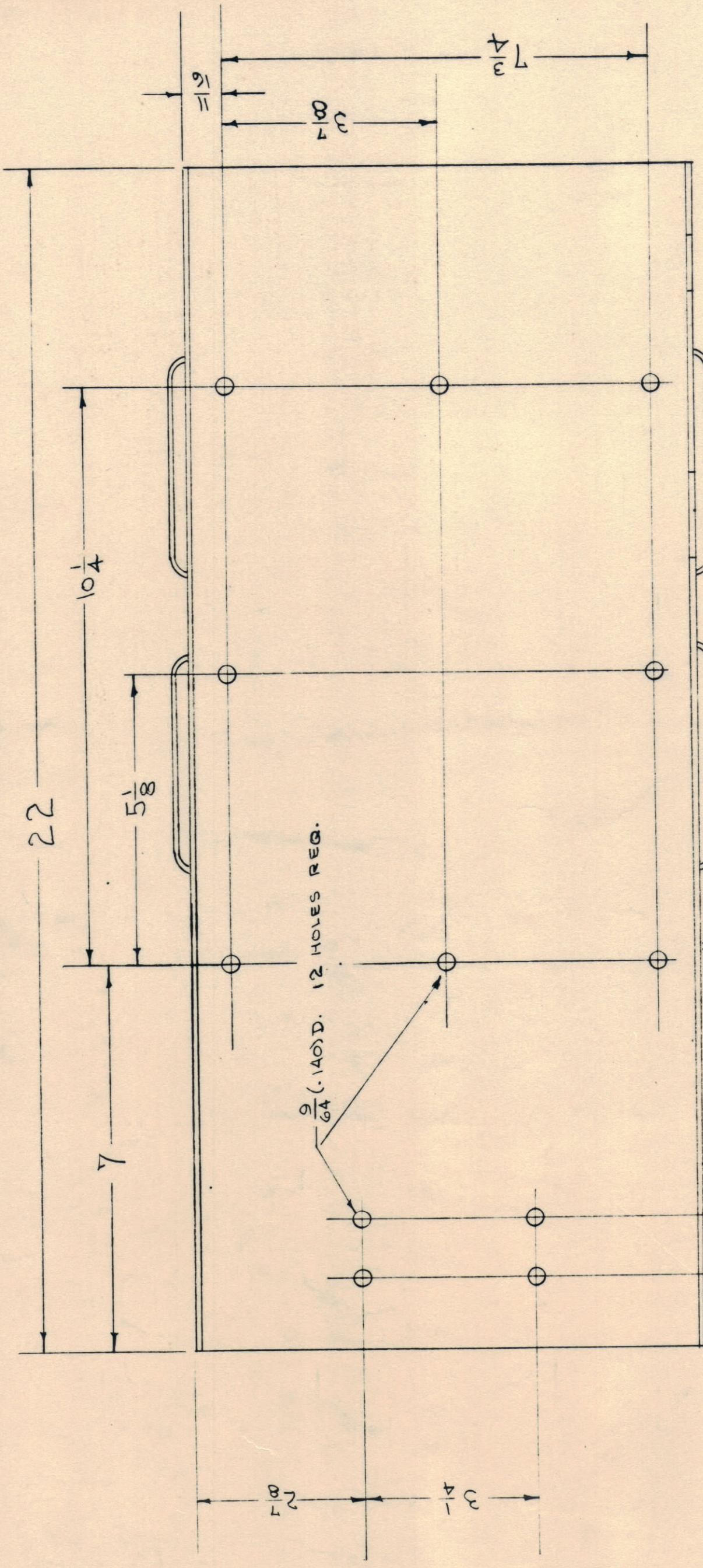
NOTICE TO PERSONS RECEIVING THIS DRAWING  
 THE TECHNICAL MATERIEL CORPORATION claims property right in the material disclosed herein. This drawing is issued in confidence for engineering purposes only and may not be reproduced or used in any manner without the written permission of THE TECHNICAL MATERIEL CORPORATION. This drawing is loaned for mutual assistance and is subject to recall at any time.

Property of:  
 THE TECHNICAL MATERIEL CORPORATION  
 MANHATTAN, NEW YORK

MS-447 B



DETAIL A  
 2 REQ.  
 3 REQ.



SEE DETAIL A

14 INSIDE

9 ±.000 INSIDE

CUTOUPS IN THIS SIDE ONLY

SPOT WELDED TO REAR PANEL (DWG. MS-448)  
 AS PER DWG. A-644.

LEFT SIDE VIEW

ISSUE	DATE	CHANGED FROM	SCALE	DRILL HUNGS COMMERCIAL STOCK
A	1-6-54	1-6-54	1/4"	OTHERS ARE NOT INCLUDED.

REQ. ITEM	PART NO.	DESCRIPTION	SYMBOL
16 GA. (.0315)		THE TECHNICAL MATERIEL CORP. MANHATTAN, NEW YORK	
STEEL	11	COVER	
MILD		TAC-1	
TYPE & TEMPER			
HEAT TREAT. SPEC.			
FINISH & SPEC. NO.			

ISSUE	DATE	PROJECT NO.	USED ON
1	1-6-54	132	
MODEL			
NO. OF UNITS			