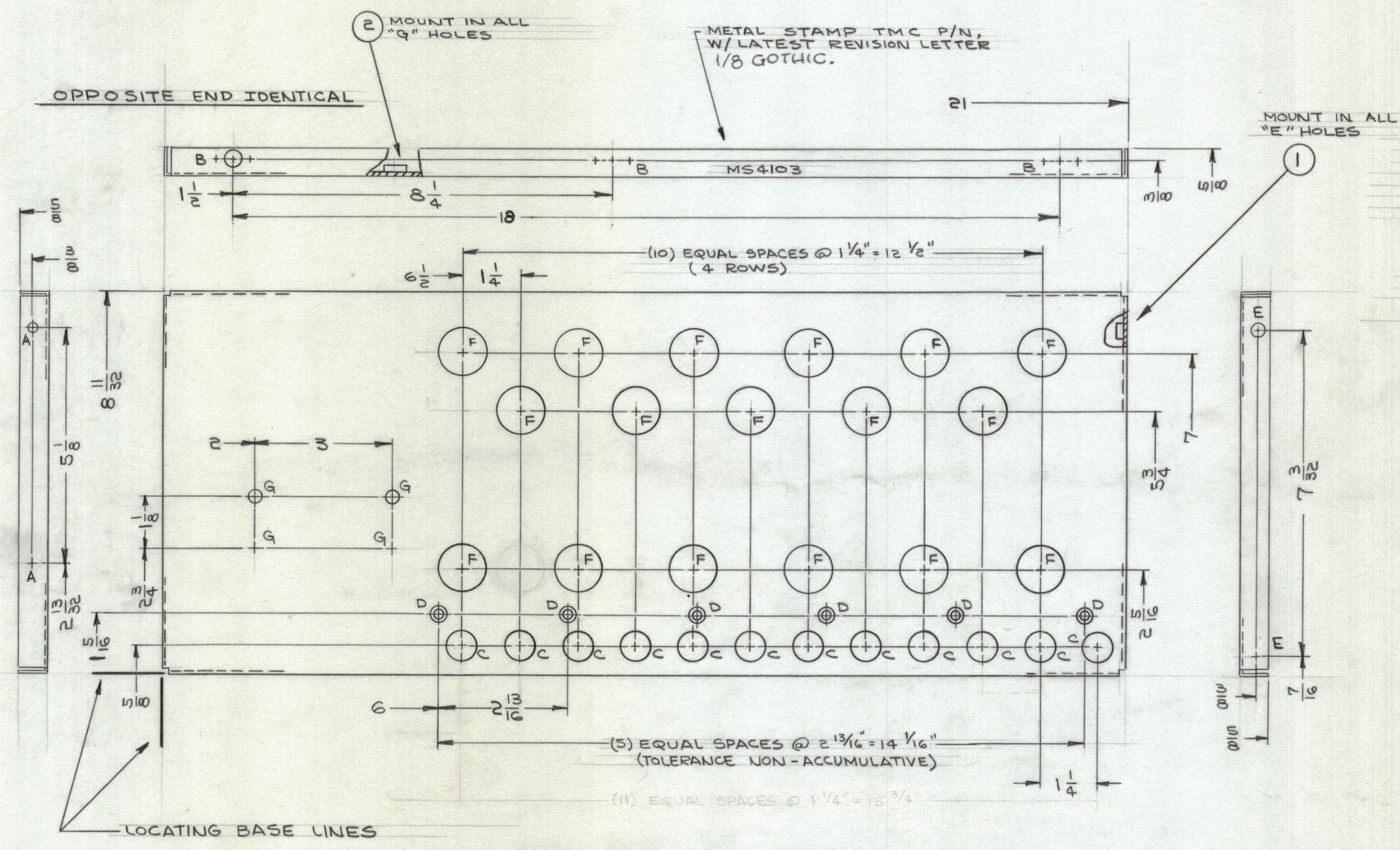
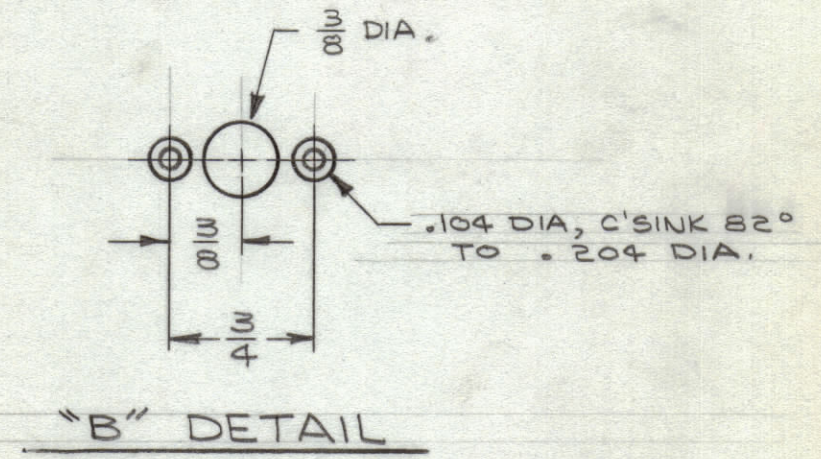


REVISIONS						
ZONE	SYM	DESCRIPTION	DATE	E.M.N. NO.	DRAFT	CHKD
	X2	REDRAWN - NO CHANGES	1/27/65	X1	JK	JM
	Ø	ORIGINAL RELEASE FOR PRODUCTION	2/10/65			JL JMS



HOLE	DESCRIPTION	REQ.
A	13/64 DIA	2
B	SEE DETAIL	6
C	5/8 DIA	12
D	.169 DIA., C'SINK 82° TO .337 DIA	6
E	.221 - .224 DIA	2
F	1" DIA	17
G	.250 - .253 DIA	4



MS4103 Ø

UNLESS OTHERWISE SPECIFIED:

1. USE MATERIAL THICKNESS FOR MAXIMUM RADIUS ON ALL BENDS
2. ALL ANGULAR BENDS 90 DEGREES
3. REMOVE ALL BURRS AND SHARP EDGES
4. MOUNT INSERTS AFTER FINISHING

1	RTPA-1	A 4050
Q'TY./UNIT	MODEL USED ON	ASS'Y. NO.
SCALE 1:2	CODE A	
THE CONTENTS OF THIS DRAWING ARE THE EXCLUSIVE PROPERTY OF THE TECHNICAL MATERIEL CORP. ITS UNAUTHORIZED USE OR REPRODUCTION IN WHOLE OR IN PART IS STRICTLY FORBIDDEN.		

REQ'D.	ITEM	PART NUMBER	DESCRIPTION	SYMBOL
4	2	NT129-1032-4	NUT, PLAIN, SPLINE	G
2	1	NT129-832-4	NUT, PLAIN, SPLINE	E

EATON LIST OF MATERIAL

MATERIAL .081, ALUMINUM 5052-H32	THE TECHNICAL MATERIEL CORP. MAMARONECK, NEW YORK
FINISH 3404 YELLOW IRIDITE	TITLE PLATE, SIDE - RIGHT

DRAWN <i>Sanborn</i>	DATE 1/27/65	FINAL APPROVAL <i>RJC</i>	DATE
CHECKED <i>JMS</i>	DATE 2/19/65		
ELECT. DES. <i>W. JORDAN</i>	DATE 2/18/65		
MECH. DES.	DATE		

DECIMALS: .X ± .05, .XX ± .01, .XXX ± .005
 FRACTIONS: ± 1/64, ANGLES: ± 0° 30'

MS4103 Ø

NOTES