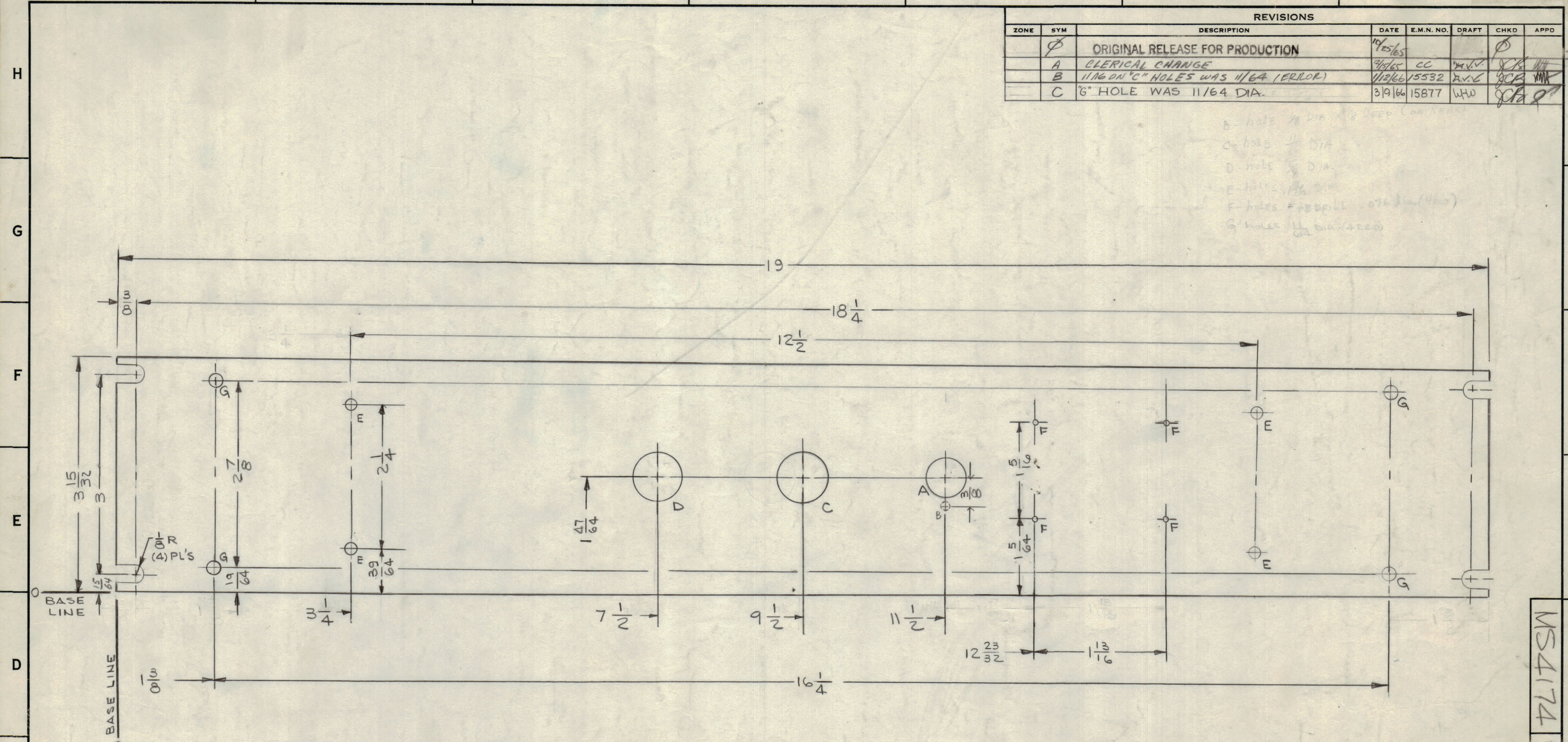


REVISIONS						
ZONE	SYM	DESCRIPTION	DATE	E.M.N. NO.	DRAFT	CHKD
	Ø	ORIGINAL RELEASE FOR PRODUCTION	10/25/65			
	A	CLERICAL CHANGE	3/1/66	CC	W.V.	
	B	11/16 ON "C" HOLES WAS 11/64 (ERROR)	11/3/66	15532	W.V.	
	C	"6" HOLE WAS 11/64 DIA.	3/19/66	15877	W.V.	

B - hole 1/8 DIA. X 1/8 DEEP (COR. AREA)
 C - hole 1/8 DIA.
 D - hole 5/8 DIA.
 E - hole .196 DIA.
 F - hole #48 DRILL (.076 DIA.)
 G - hole 15/64 DIA. (.4220)



HOLE	DESCRIPTION	REQ
A	3/16 DIA.	1
B	1/8 DIA. X 1/8 DEEP (COR. AREA)	1
C	11/16 DIA.	1
D	5/8 DIA.	1
E	.196 DIA.	4
F	#48 DRILL (.076 DIA.)	4
G	15/64 DIA.	4

MACHINING:

- MILL ALL EDGES.
- HOLES MUST BE DRILLED, UNLESS OTHERWISE SPECIFIED.
- LATERAL BOW OF PANEL MUST BE KEPT TO .031 TOLERANCE.
- PANEL MUST BE FREE OF ALL MACHINING MARKS, GOUGES AND SCRATCHES. IF NECESSARY, SAND FRONT OF PANEL WITH NO. 120 GRIT SANDPAPER.

FINISH NOTES:

- S404 - IRIDITE 14-2 AL-COAT.
- S114 - ZINC CHROMATE PRIMER } FRONT AND
- S115 - SMOOTH GRAY ENAMEL } EDGES ONLY

NOTES

1	TPCK-1	A4207
Q'TY./UNIT	MODEL USED ON	ASS'Y. NO.
SCALE	CODE	

THE CONTENTS OF THIS DRAWING ARE THE EXCLUSIVE PROPERTY OF THE TECHNICAL MATERIEL CORP. ITS UNAUTHORIZED USE OR REPRODUCTION IN WHOLE OR IN PART IS STRICTLY FORBIDDEN.

REF: LD1679

REQ'D.	ITEM	PART NUMBER	DESCRIPTION	SYMBOL
LIST OF MATERIAL				
MATERIAL		3/16 THK ALUMINUM 2024-T3		
FINISH		SEE NOTES		
		THE TECHNICAL MATERIEL CORP. MAMARONECK, NEW YORK		
		TITLE: PANEL, FRONT (POWER SUPPLY)		
DRAWN	DATE	FINAL APPROVAL	DATE	
EAZNA	9/22/65	[Signature]	10/24/65	
CHECKED	DATE			
J.L.	3/28/66			
ELECT. DES.	DATE			
			MS4174	
MECH. DES.	DATE			
			SHEET 1	
			REV. LTR. C	

MS4174 C