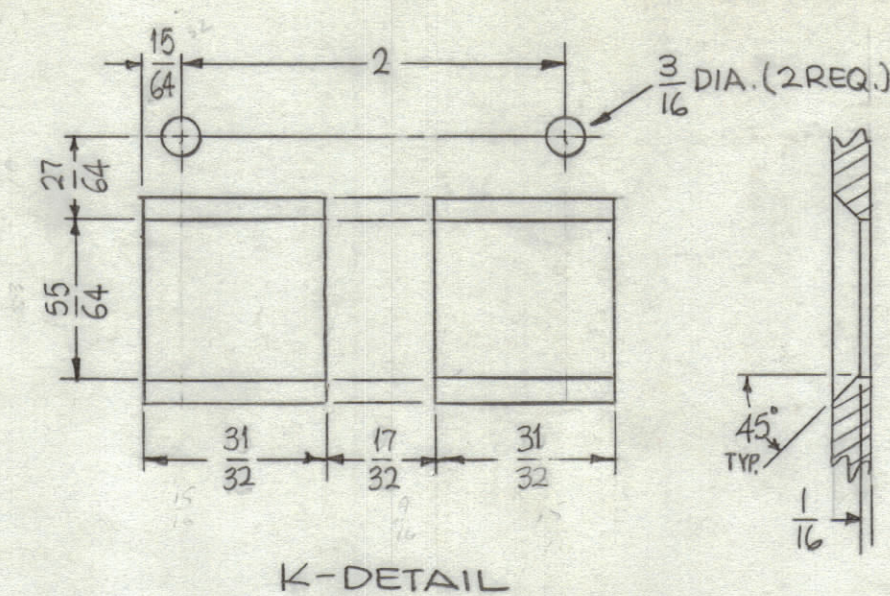
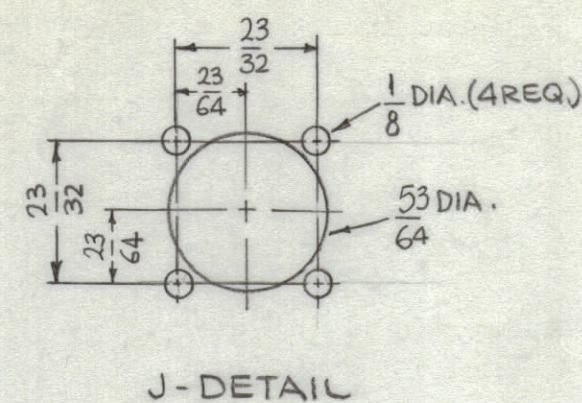
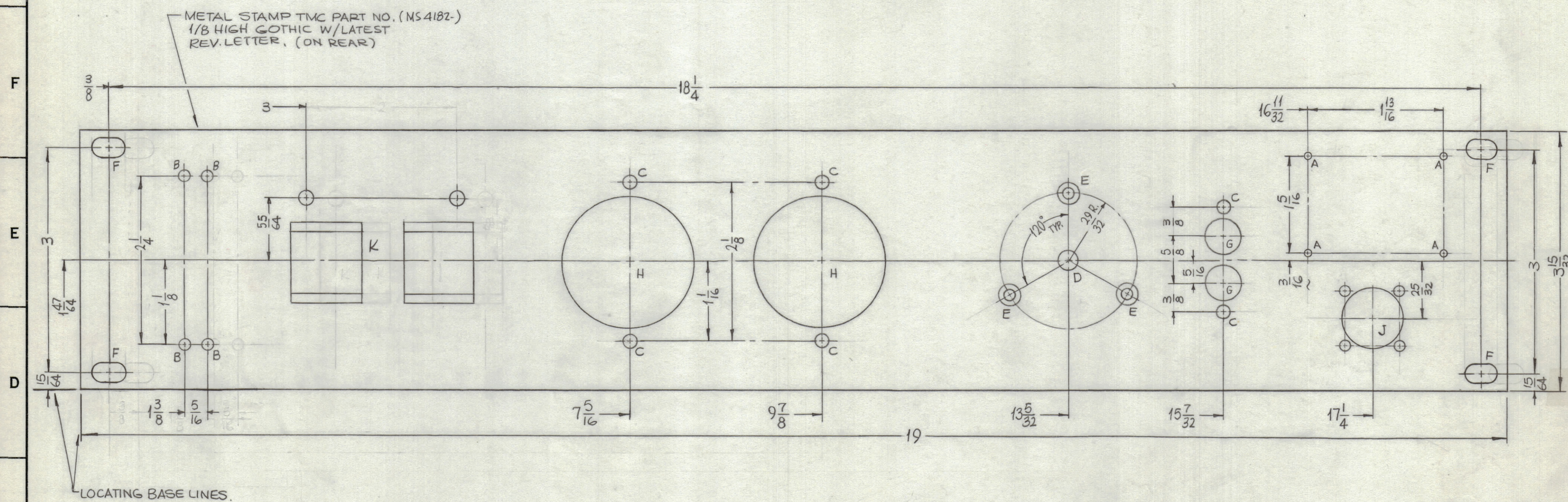


HOLES	DESCRIPTION	REQ.
A	.078 DIA.	4
B	9/64 DIA.	4
C	11/64 DIA.	6
D	9/32 DIA.	1
E	DR. .144 DIA. C'SINK 82° X .284 D.	3
F	1/4 X 29/64 SLOT	4
G	15/32 DIA.	2
H	1-3/4 DIA.	2
J	SEE DETAIL	1
K	SEE DETAIL	1



REVISIONS							
ZONE	SYM	DESCRIPTION	DATE	E.M.N. NO.	DRAFT	CHKD	APPD
X		EXP. RELEASE	12-16-64	X	SRG		
X 2		DIM. 3/16 WAS 3/32; K DETAIL ENLARGED 1/32 ALL AROUND	12-31-64	X 1	SRG		
		ORIGINAL RELEASE FOR PRODUCTION	1-4-65				

METAL STAMP TMC PART NO. (MS 4182)
1/8 HIGH GOTHIC W/LATEST
REV. LETTER, (ON REAR)



MACHINING:

- MILL ALL EDGES.
- HOLES MUST BE DRILLED, UNLESS OTHERWISE SPECIFIED.
- LATERAL BOW OF PANEL MUST BE KEPT TO .031 TOLERANCE.
- PANEL MUST BE FREE OF ALL MACHINING MARKS, GOUGES AND SCRATCHES. IF NECESSARY, SAND FRONT OF PANEL WITH NO. 120 GRIT SANDPAPER.

FINISH NOTES:

- S404 - IRIDITE 14-2 AL-COAT.
- S114 - ZINC CHROMATE PRIMER } FRONT AND
- S115 - SMOOTH GRAY ENAMEL } EDGES ONLY

NOTES

Q'TY./UNIT	MODEL USED ON	ASS'Y. NO.
1	APP-10	
SCALE 1:1	CODE A	

REQ'D.	ITEM	PART NUMBER	DESCRIPTION	SYMBOL
LIST OF MATERIAL				
MATERIAL		THE TECHNICAL MATERIEL CORP.		
3/16 THICK ALUMINUM		MAMARONECK, NEW YORK		
2024-T3		TITLE		
FINISH		PANEL, FRONT		
SEE NOTES		DRAWN		
		SRG		
		DATE		
		12-16-64		
		CHECKED		
		FS		
		DATE		
		12-29-64		
		ELECT. DES.		
		MECH. DES.		
		DATE		
		12-30-64		
		SHEET		
		MS 4182		
		REV. LTR.		

UNLESS OTHERWISE SPECIFIED
DIMENSIONS ARE IN INCHES AND INCLUDE
CHEMICALLY APPLIED OR PLATED FINISHES

DECIMALS: .X ± .05, .XX ± .01, .XXX ± .005
FRACTIONS: ± 1/64, ± 0° 30'

MS 4182