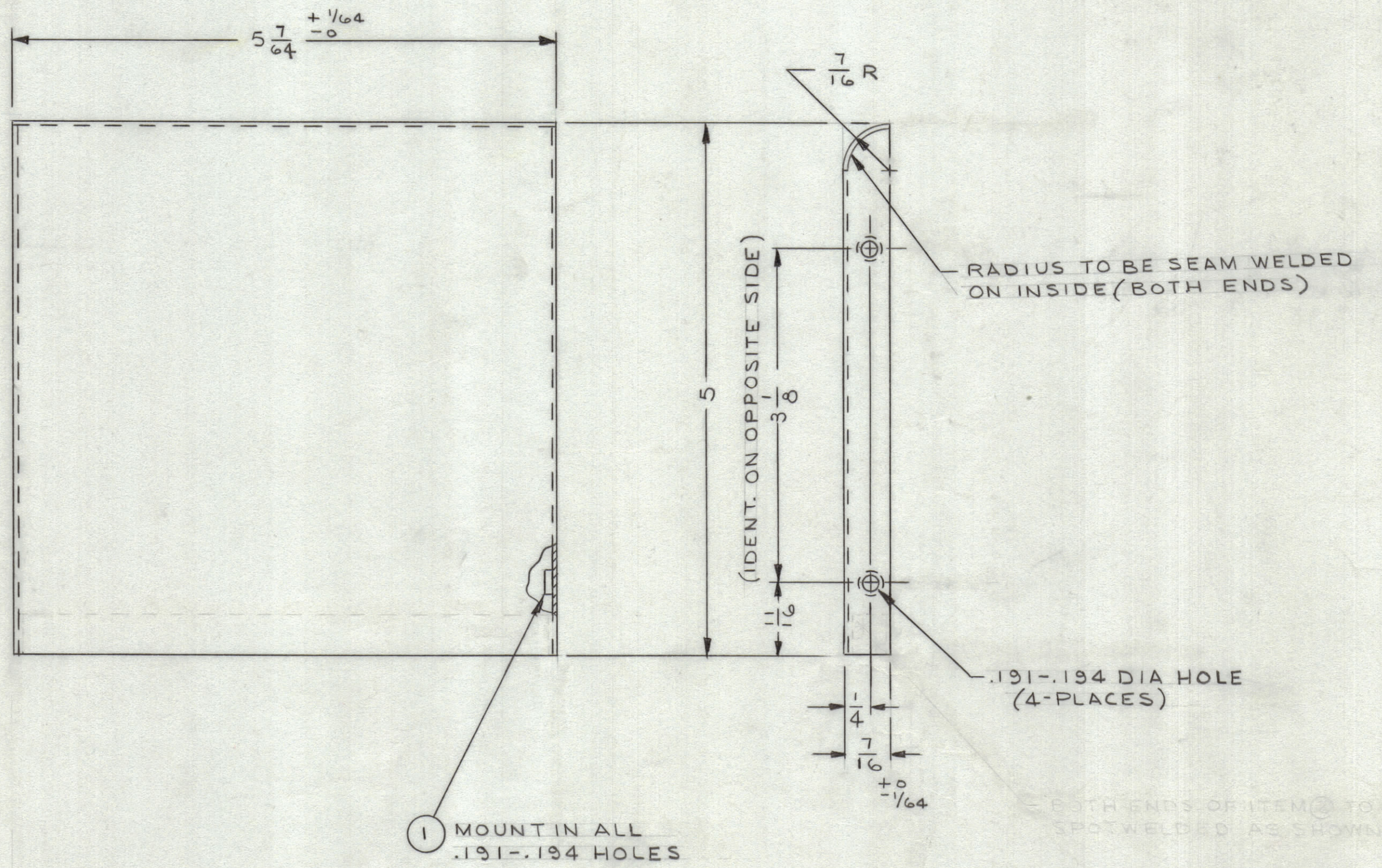


REVISIONS						
ZONE	SYM	DESCRIPTION	DATE	E.M.N. NO.	DRAFT	CHKD APPD
	X	EXP. RELEASE	12/23/64		JL	
	X ₁	ADDED ITEM 2 & WELDING NOTES	12/23/64		JL	W.J.
	X ₂	REMOVED ITEM 2 WAS MS 4195, DEFLECTOR, AIR.	12/30/64		JL	W.J.
	Ø	ORIGINAL RELEASE FOR PRODUCTION	5/12/65		JL	



METAL STAMP TMC PART NO. 1/8 HIGH GOTHIC.

- UNLESS OTHERWISE SPECIFIED:
1. USE MATERIAL THICKNESS FOR MAXIMUM RADIUS ON ALL BENDS
 2. ALL ANGULAR BENDS 90 DEGREES
 3. REMOVE ALL BURRS AND SHARP EDGES
 4. MOUNT INSERTS AFTER FINISHING

NOTES

1	RAK-75-2	
Q'TY./UNIT	MODEL USED ON	ASS'Y. NO.
SCALE 1:1	CODE A	
THE CONTENTS OF THIS DRAWING ARE THE EXCLUSIVE PROPERTY OF THE TECHNICAL MATERIEL CORP. ITS UNAUTHORIZED USE OR REPRODUCTION IN WHOLE OR IN PART IS STRICTLY FORBIDDEN.		

4	1	NT129-632-3	NUT, ROUND, SWAGE TYPE	
REQ'D.	ITEM	PART NUMBER	DESCRIPTION	SYMBOL
EATON (BARNES) LIST OF MATERIAL				
MATERIAL CRS #18 (.0478) GA			THE TECHNICAL MATERIEL CORP. MAMARONECK, NEW YORK	
FINISH PAINT, BLUE-GREY SMOOTH PER TMC S523			TITLE FLUE, AIR DUCT	
UNLESS OTHERWISE SPECIFIED DIMENSIONS ARE IN INCHES AND INCLUDE CHEMICALLY APPLIED OR PLATED FINISHES		DRAWN J. LESHINSKI	DATE 12/23/64	FINAL APPROVAL [Signature]
DECIMALS .X ± .05 .XX ± .01 .XXX ± .005		CHECKED [Signature]	DATE 5/12/65	DATE 5/12/65
FRACTIONS ± 1/64 ANGLES ± 0° 30'		ELECT. DES. [Signature]	DATE 3/19/65	DATE 3/19/65
TOLERANCES		MECH. DES. [Signature]	DATE 3/19/65	DATE 3/19/65
			SHEET	REV. LTR.

MS4192