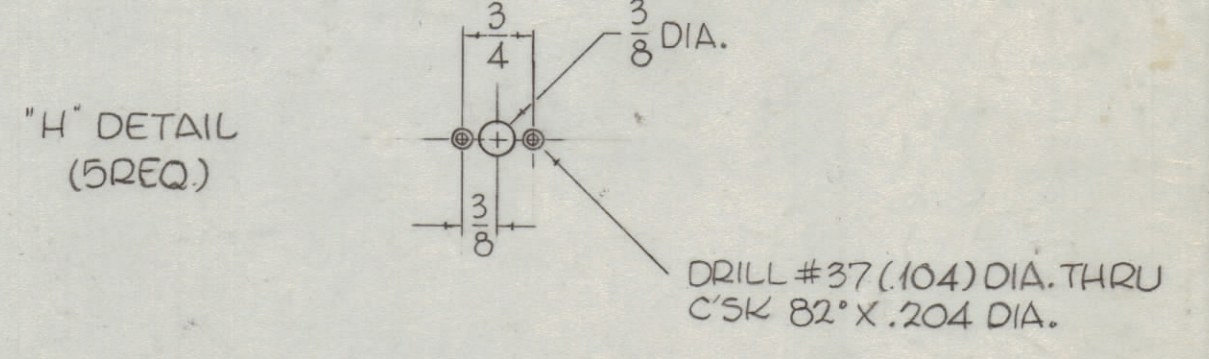


REVISIONS						
ZONE	SYM	DESCRIPTION	DATE	E.M.N. NO.	DRAFT	CHKD
	X1	ADDED 'J', 'K', & 'L' HOLES; ADDED ITEM 7 'F' HOLE. REQ WAS 11; 'K' WAS 'F' HOLES ITEM 6 QTY WAS 11; ADDED 3 23/32 & 3 1/16	2/13/65		JL	
	X2	3/82 DIA ADDED TO 'D' HOLE OFF G	3/4/65		SRG	
	Ø	ORIGINAL RELEASE FOR PRODUCTION	11-23-65		JL	
D8	A	3 7/16 WAS 3 7/32	2-21-64	15812	V/NEA	
G8	B	ADD 28" DIM. BETWEEN 2 'G' HOLES	4-7-77	21528	SOL	

HOLES	REQ
A - .221 MIN., .224 MAX. DIA'S.	12
B - 1/4 DIA.	29
C - 5/16 DIA.	7
D - 3/8 DIA.	9
E - 1/2 DIA.	5
F - .250 MIN., .253 MAX. DIA'S.	5
G - 5/8 DIA.	10
H - SEE DETAIL	5
J - 5/32 DIA	10
K - .191 - .194 DIA	6
L - N° 9 (.1960) DRILL THRU & C'SINK 2 82° X .390 DIA.	2



REF: TMC DWG LD1687

QTY	UNIT	MODEL USED ON	ASSY. NO.
1	8	MS4386	SCREEN, TOP SHIELD
6	7	NT129-632-6	NUT, ROUND, SWAGE TYPE
5	6	NT129-1032-6	NUT, ROUND, SWAGE TYPE
12	5	NT129-832-6	NUT, ROUND, SWAGE TYPE
5	4	NTH0348BN6	NUT, HEXAGON, DOUBLE CHAMFER
5	3	LWS03NRN	LOCKWASHER, SPLIT
5	2	SCFP0348BN8	SCREW, MACHINE
5	1	FS102-1	SPRING, 'S' TYPE

LIST OF MATERIAL			
MATERIAL	1/8 THICK, ALUMINUM, 5052 - H32	THE TECHNICAL MATERIEL CORP. MAMARONECK, NEW YORK	
FINISH	S404-IRIDITE, 14-2-AL COAT	TITLE SHIELD, TOP, MAIN FRAME	
SCALE	GPT10KLF	DATE	2-1-65
UNLESS OTHERWISE SPECIFIED DIMENSIONS ARE IN INCHES AND INCLUDE CHEMICALLY APPLIED OR PLATED FINISHES	DECIMALS ±.005	ANGLES ±.0°	±.0°
THE CONTENTS OF THIS DRAWING ARE THE EXCLUSIVE PROPERTY OF THE TECHNICAL MATERIEL CORP. ITS UNAUTHORIZED USE OR REPRODUCTION IN WHOLE OR IN PART IS STRICTLY FORBIDDEN.	FRACCTIONS ± 1/64	RECT. DES.	DATE
	TOLERANCES ±.005	MECH. DES.	DATE

- UNLESS OTHERWISE SPECIFIED:
- USE MATERIAL THICKNESS FOR MAXIMUM RADIUS ON ALL BENDS
 - ALL ANGULAR BENDS 90 DEGREES
 - REMOVE ALL BURRS AND SHARP EDGES
 - MOUNT INSERTS AFTER FINISHING

NOTES

MS4207 B