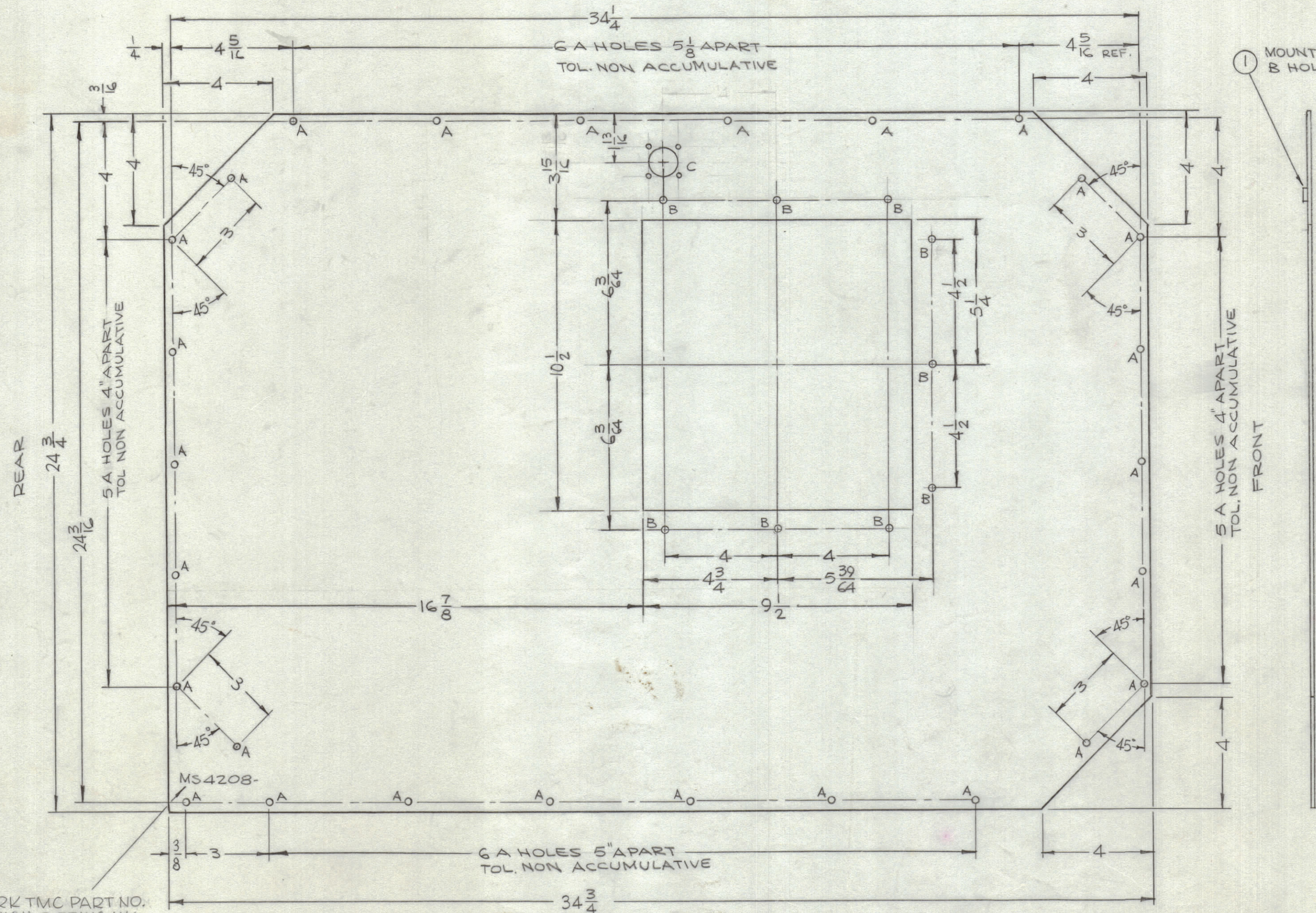
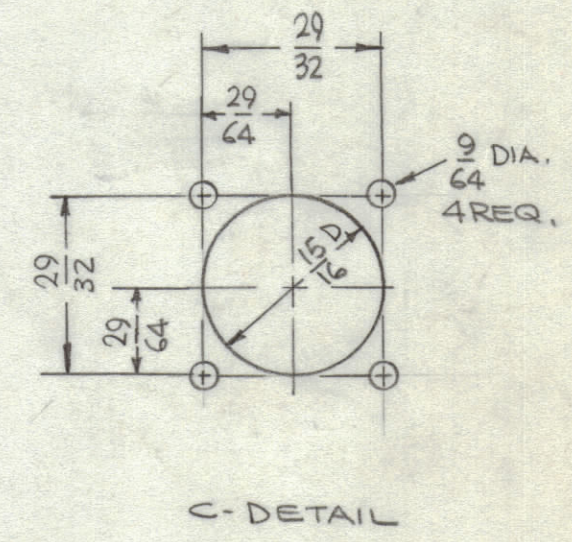


REVISIONS							
ZONE	SYM	DESCRIPTION	DATE	E.M.N. NO.	DRAFT	CHKD	APPD
	Ø	ORIGINAL RELEASE FOR PRODUCTION	6-22-66	Ø			HLG



HOLES	DESCRIPTION	REQ
A	15/64 DIA.	27
B	.221-.224	9
C	SEE DETAIL	1



MARK TMC PART NO. 1/8 HIGH GOTHIC W/ LATEST REV. LETTER.

REMOVE ALL BURRS AND SHARP EDGES  
MOUNT INSERTS AFTER FINISHING

NOTES

1	GPT-10KLF	AX 576
QTY./UNIT	MODEL USED ON	ASS'Y. NO.
SCALE	CODE	
DO NOT SCALE	A	
THE CONTENTS OF THIS DRAWING ARE THE EXCLUSIVE PROPERTY OF THE TECHNICAL MATERIEL CORP. ITS UNAUTHORIZED USE OR REPRODUCTION IN WHOLE OR IN PART IS STRICTLY FORBIDDEN.		

LD1690-			
9	1	NT129-832-4	NUT, PLAIN, SPLINE
REQ'D.	ITEM	PART NUMBER	DESCRIPTION
F. BUDETTI LIST OF MATERIAL			
MATERIAL		THE TECHNICAL MATERIEL CORP.	
.064 THICK ALUMINUM		MAMARONECK, NEW YORK	
5052-H32		TITLE	
FINISH		SHIELD, LEFT SIDE, TOP INSIDE	
S404 YEL. IRIDITE		MAIN FRAME	
UNLESS OTHERWISE SPECIFIED	DRAWN	DATE	FINAL APPROVAL
DIMENSIONS ARE IN INCHES AND INCLUDE	DATE	DATE	DATE
CHEMICALLY APPLIED OR PLATED FINISHES	DATE	DATE	DATE
DECIMALS	ELECT. DES.	DATE	DATE
.X ± .05	MECH. DES.	DATE	DATE
.XX ± .01		DATE	DATE
.XXX ± .005		DATE	DATE
FRACTIONS		DATE	DATE
± 1/64		DATE	DATE
ANGLES		DATE	DATE
± 0° 30'		DATE	DATE
TOLERANCES		DATE	DATE
		DATE	DATE

MS4208