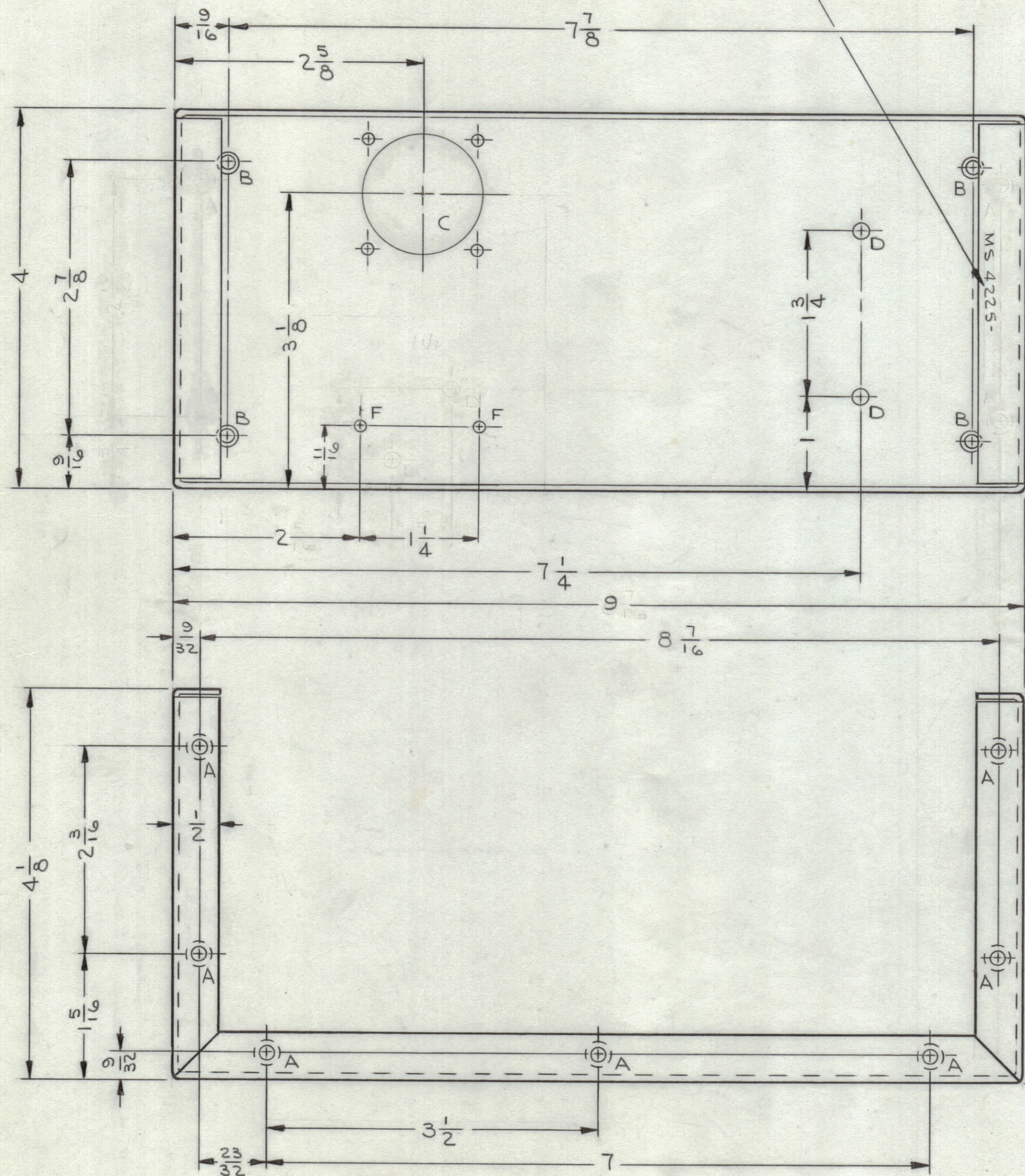
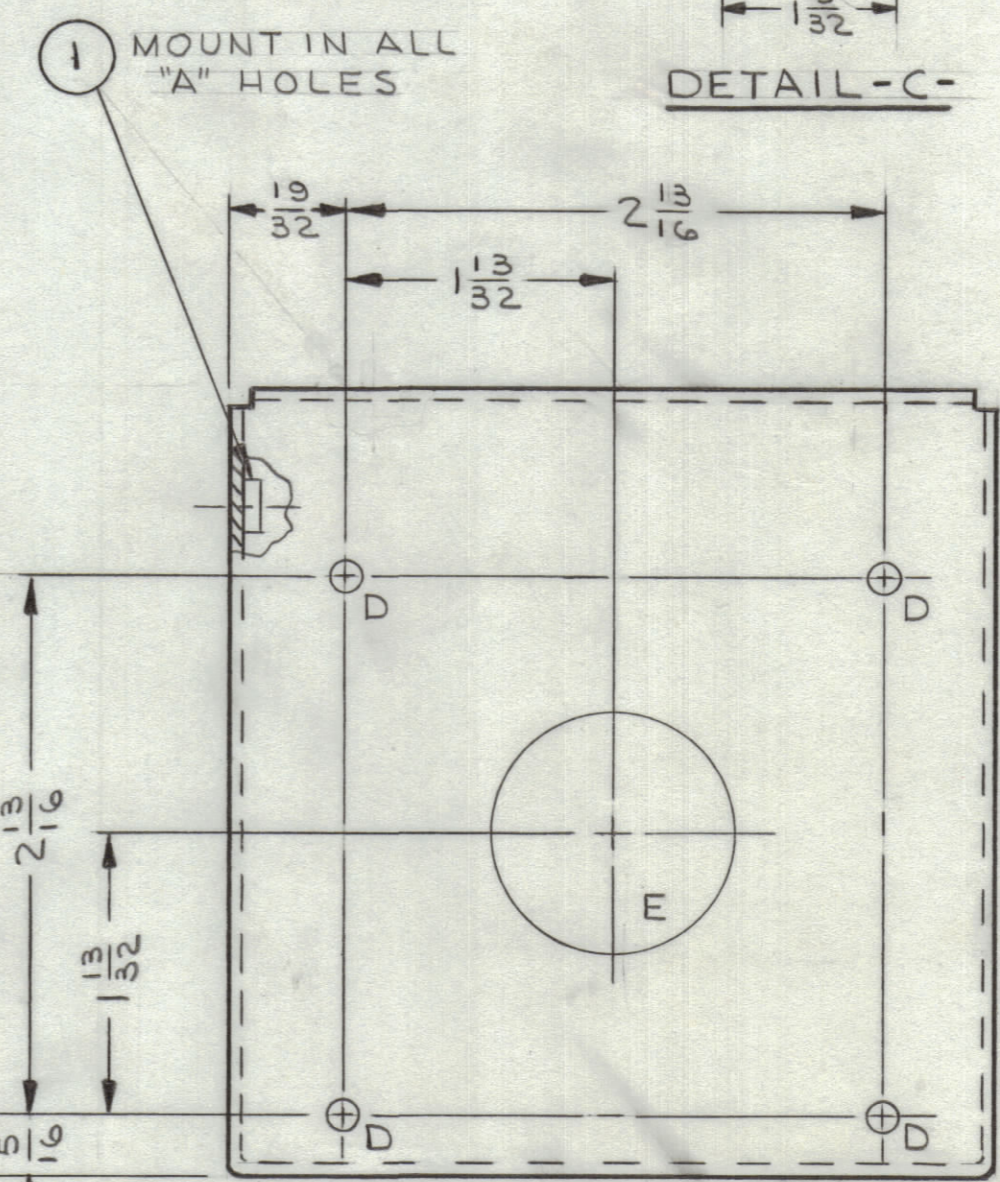
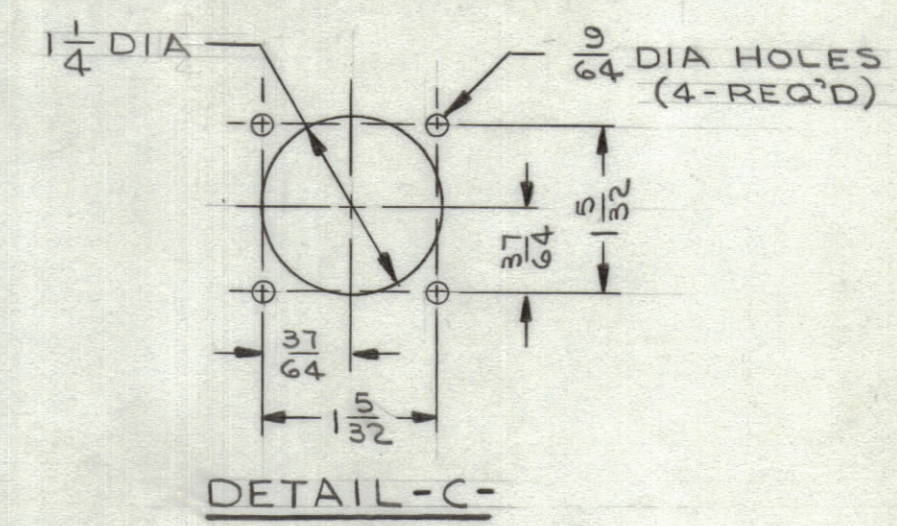


REVISIONS							
ZONE	SYM	DESCRIPTION	DATE	E.M.N. NO.	DRAFT	CHKD	APPD
	X	EXP. RELEASE	2/25/65		JL		
	Ø	ORIGINAL RELEASE FOR PRODUCTION	12/24/65				

METAL STAMP TMC PART NO.
1/8 HIGH GOTHIC. W/LATEST REV. LETTER

HOLE LEGEND		
HOLE	DESCRIPTION	REQ'D
A	.191-.194 DIA	14
B	.169 DIA & C'SINK 82° X .337 DIA	4
C	SEE DETAIL	1
D	3/16 DIA	12
E	1/4 DIA	2
F	9/64 DIA	2



(IDENTICAL ON OPPOSITE SIDE)

(BOTH ENDS IDENTICAL) REF.: LD 1707

- UNLESS OTHERWISE SPECIFIED:
1. USE MATERIAL THICKNESS FOR MAXIMUM RADIUS ON ALL BENDS
 2. ALL ANGULAR BENDS 90 DEGREES
 3. REMOVE ALL BURRS AND SHARP EDGES
 4. MOUNT INSERTS AFTER FINISHING

Q'TY./UNIT	1	GPT-10KLF	MODEL USED ON	ASS'Y. NO.
SCALE	1/1		CODE	

REQ'D	14	ITEM	1	PART NUMBER	NT-129-632-4	DESCRIPTION	NUT, ROUND, SWAGE TYPE	SYMBOL	A
LIST OF MATERIAL									
MATERIAL				THE TECHNICAL MATERIEL CORP.					
.064 THK ALUMINUM				MAMARONECK, NEW YORK					
5052-H32				TITLE					
FINISH				CHASSIS, SWR COUPLER					
YELLOW IRIDITE				DRAWN		DATE		FINAL APPROVAL	
PER S404				J. LESHINSKI		2/25/65		M. H. HAY	
UNLESS OTHERWISE SPECIFIED				CHECKED		DATE		DATE	
DIMENSIONS ARE IN INCHES AND INCLUDE				JCH		6-28-65		12/20/65	
CHEMICALLY APPLIED OR PLATED FINISHES				MECH. DES.		DATE		DATE	
DECIMALS								MS4225	
.X ± .05				ELECT. DES.		DATE		Ø	
.XX ± .01				MECH. DES.		DATE		SHEET	
.XXX ± .005								REV. LTR.	
TOLERANCES								REV. NO. 440H	
± 1/64								21528	
ANGLES									
± 0° 30'									

NOTES

MS4225