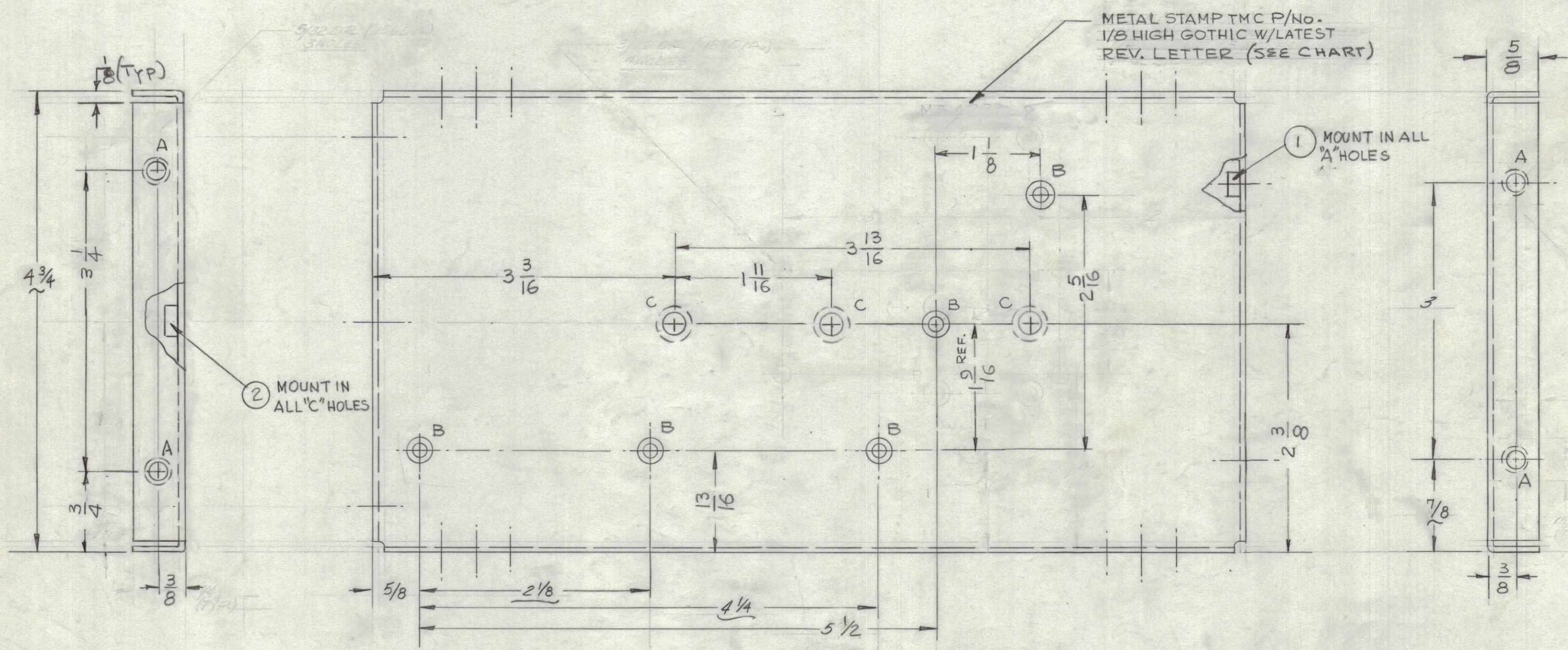
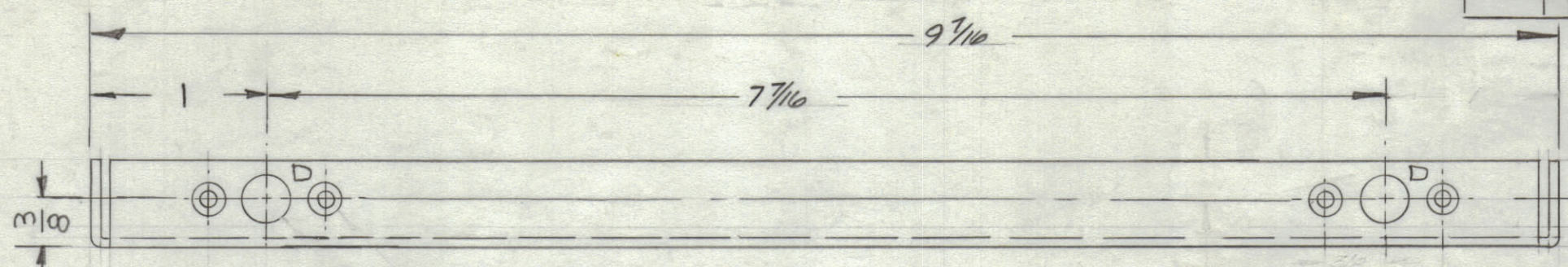


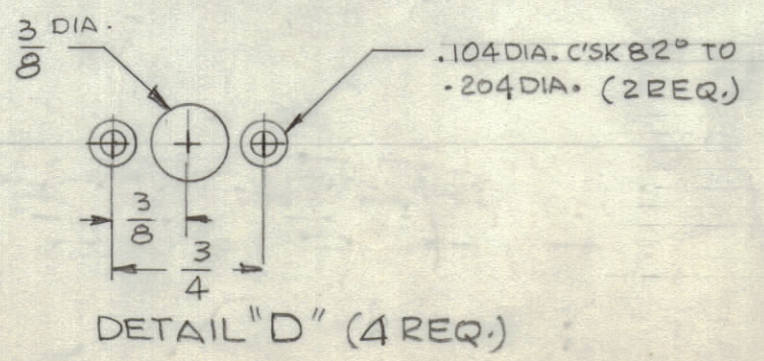
REVISIONS						
ZONE	SYM	DESCRIPTION	DATE	E.M.N. NO.	DRAFT	CHKD
	A	ADDED NOTES 2, 3, 3	10/30/64			E.D.J.
D/EET		4 3/4 WAS 5, 3 3/4 WAS 4, 1 7/8 WAS 2	11-19			E.D.J.
D3#5	B	1 13/16 WAS 1 15/16, 7/8 WAS 1 1/8	64			E.D.J.
D2		7/8 WAS 1				
C9.5#6		5/8 WAS 1/2, 2 1/8 WAS 2 3/16, 4 1/4 WAS 4 3/8, 5 7/16 WAS 5 9/16	12.29.64	X		ASB
	X	EXPERIMENTAL RELEASE				
	X1	3 "A" HOLES WERE 5/32 DR. 2 "A" HOLES WERE 3/16 DIA. 2 "C" HOLES 3-48 - 3 "C" HOLES ADDED - IN LEFT SIDE "A" HOLES RELOCATED - ONE "B" HOLE RELOCATED DIM 5/8 WAS 9/16 - WAS CHANNEL, LEFT Y RIGHT SIDE MS4230	3-9-65			G.D.L.
	φ	ORIGINAL RELEASE FOR PRODUCTION	3/31/65			



HOLE	DESCRIPTION	REQ
A	.224 - .221 DIA.	4
B	.144 DIA. C'SK 82° TO .284 DIA.	5
C	.347 - .344 DIA.	3
D	SEE DETAIL	4

UNLESS OTHERWISE SPECIFIED:

1. USE MATERIAL THICKNESS FOR MAXIMUM RADIUS ON ALL BENDS
2. ALL ANGULAR BENDS 90 DEGREES
3. REMOVE ALL BURRS AND SHARP EDGES
4. MOUNT INSERTS AFTER FINISHING



REQ'D.	ITEM	PART NUMBER	DESCRIPTION	SYMBOL
3	2	NT129-420-4	NUT, PLAIN, SPLINE	C
4	1	NT129-832-4	NUT, PLAIN, SPLINE	A

F. BUDETTI LIST OF MATERIAL 5016-3-B

MATERIAL	THE TECHNICAL MATERIEL CORP. MAMARONECK, NEW YORK		
.064 THK ALUMINUM .5052-H32			
FINISH	TITLE		
S404 YEL. IRIDITE	PLATE, LEFT SIDE		
DRAWN	DATE	FINAL APPROVAL	DATE
E.D. JENSEN	10/24/64	ASB	
CHECKED	DATE		
R.D. FSL	10/24/64		
ELECT. DES.	DATE		
	3-31-65		
MECH. DES.	DATE		
	10-26-64		

UNLESS OTHERWISE SPECIFIED
DIMENSIONS ARE IN INCHES AND INCLUDE
CHEMICALLY APPLIED OR PLATED FINISHES

DECIMALS	FRACTIONS
.X ± .05	± 1/64
.XX ± .01	ANGLES
.XXX ± .005	± 0° 30'

TOLERANCES

THE CONTENTS OF THIS DRAWING ARE THE EXCLUSIVE PROPERTY OF THE TECHNICAL MATERIEL CORP. ITS UNAUTHORIZED USE OR REPRODUCTION IN WHOLE OR IN PART IS STRICTLY FORBIDDEN.

REPROVAL NO. 440H 16108

MS4230