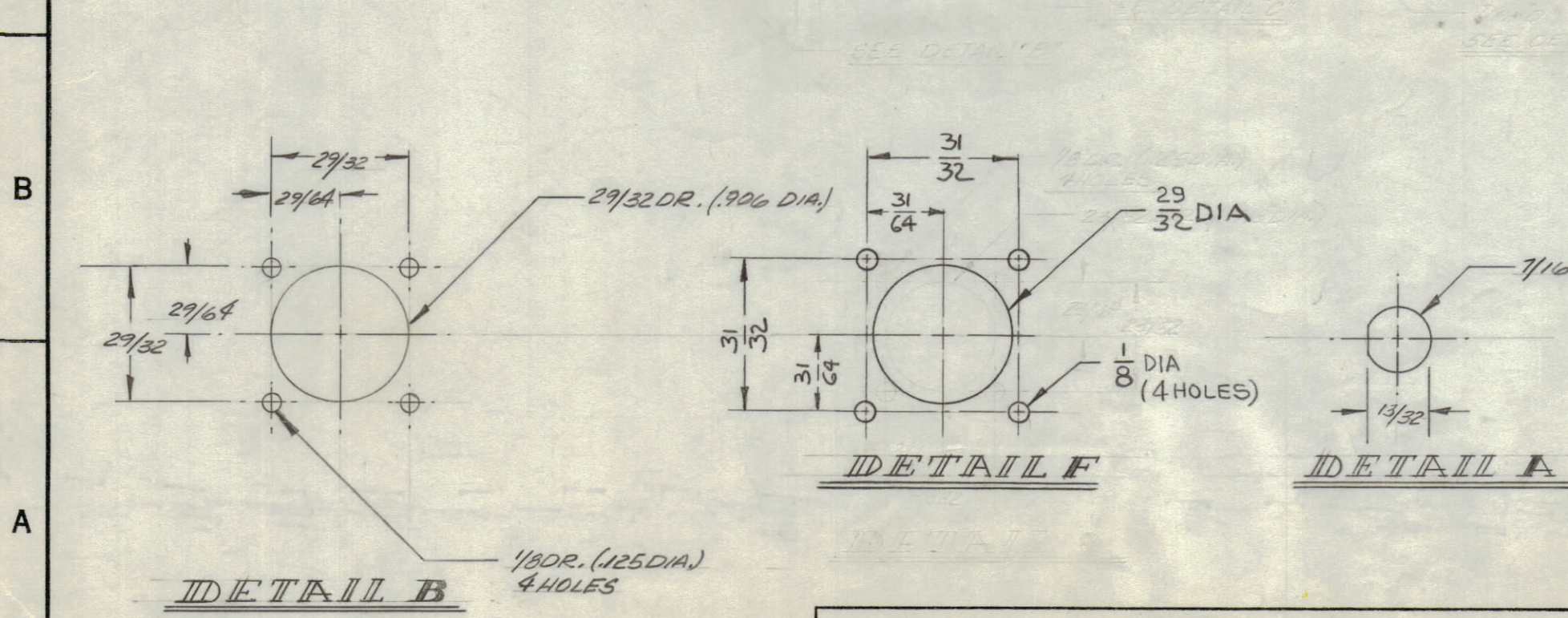
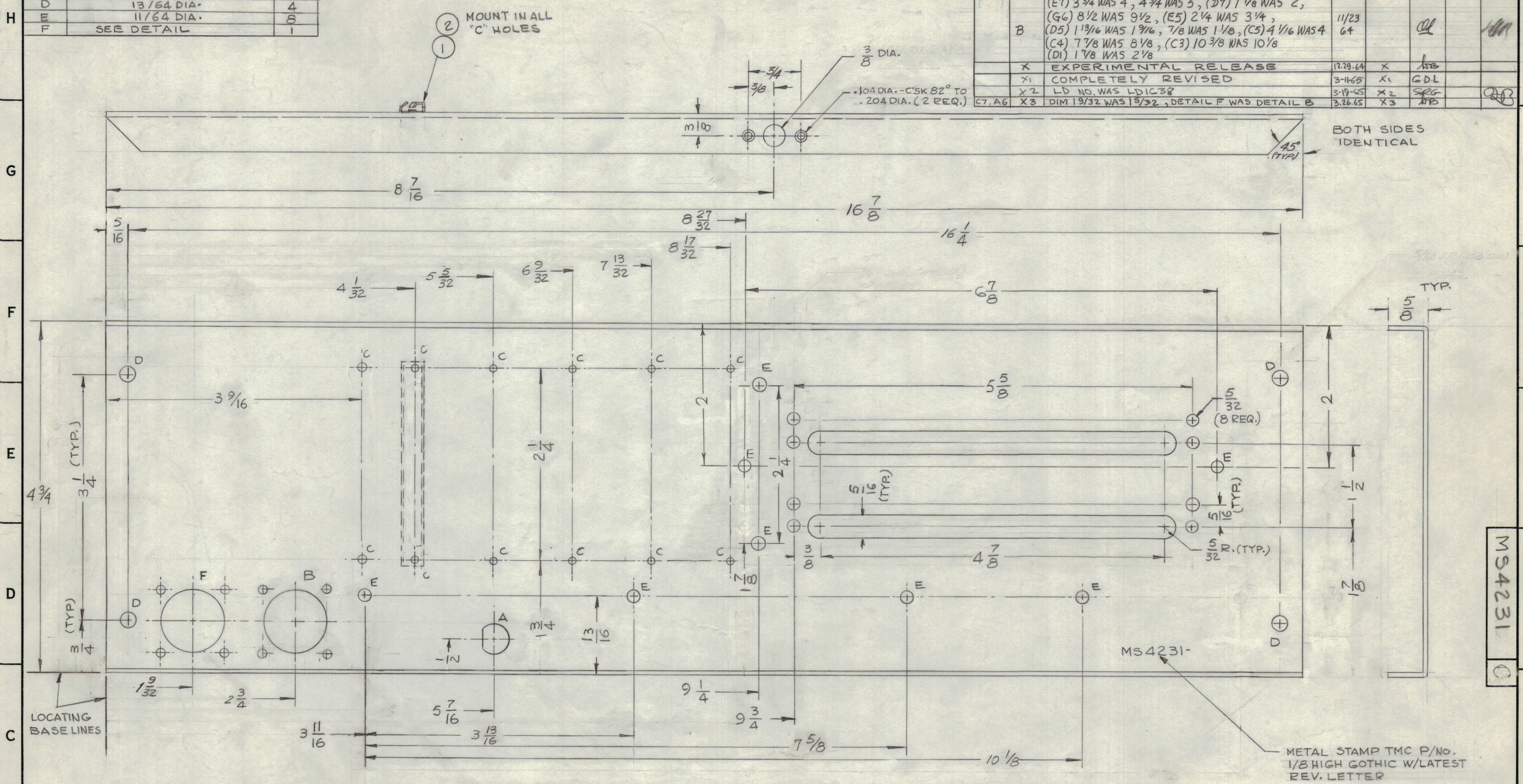


HOLE	DESCRIPTION	REQ
A	SEE DETAIL	1
B	SEE DETAIL	1
C	3/32 DIA.	12
D	13/64 DIA.	4
E	11/64 DIA.	8
F	SEE DETAIL	1

ZONE	SYM	DESCRIPTION	DATE	EMH #	DFT	CKD	APPD
		ORIGINAL RELEASE FOR PRODUCTION	3-31-65				
C		ADDED (2) TWO "E" HOLES	4-25-66	16136	HCA		

REVISIONS							
ZONE	SYM	DESCRIPTION	DATE	E.M.N. NO.	DRAFT	CHKD	APPD
A		ADDED RISER CARD SLIDE HOLES	4/24/64			E.D.J.	
B		(E7) 3 3/4 WAS 4, (4 3/4 WAS 5, (D7) 1 7/8 WAS 2, (G6) 8 1/2 WAS 9 1/2, (E5) 2 1/4 WAS 3 1/4, (D5) 1 13/16 WAS 1 9/16, (7/8 WAS 1 1/8, (C5) 4 1/16 WAS 4 (C4) 7 7/8 WAS 8 1/8, (C3) 10 3/8 WAS 10 1/8 (D1) 1 7/8 WAS 2 1/8	11/23/64				
X		EXPERIMENTAL RELEASE	12-29-64	X			
X1		COMPLETELY REVISED	3-11-65	X1		GDL	
X2		LD NO. WAS LDIC38	3-19-65	X2		SFG	
X3		DIM 1 9/32 WAS 1 5/32, DETAIL F WAS DETAIL B	3-26-65	X3		APD	



NOTES

THE CONTENTS OF THIS DRAWING ARE THE EXCLUSIVE PROPERTY OF THE TECHNICAL MATERIEL CORP. ITS UNAUTHORIZED USE OR REPRODUCTION IN WHOLE OR IN PART IS STRICTLY FORBIDDEN.

- UNLESS OTHERWISE SPECIFIED:
1. USE MATERIAL THICKNESS FOR MAXIMUM RADIUS ON ALL BENDS
 2. ALL ANGULAR BENDS 90 DEGREES
 3. REMOVE ALL BURRS AND SHARP EDGES
 4. MOUNT INSERTS AFTER FINISHING

REF: LD 1819		G 2 CU157-3 RETAINER		C
I2 1 EY 101-3 EYELET				C
REQ'D.	ITEM	PART NUMBER	DESCRIPTION	SYMBOL
F. BUDETTI LIST OF MATERIAL 5016-2-B				
MATERIAL		THE TECHNICAL MATERIEL CORP.		
.062 SH1. ALUM 5052-H32		MAMARONECK, NEW YORK		
FINISH		TITLE		
S404 YEL IRIDITE		PLATE, REAR		
QTY./UNIT		MODEL USED ON	ASS'Y. NO.	
SCALE		CODE		
DO NOT SCALE		A		
DECIMALS		FRACTIONS		
.X ± .05		± 1/64		
.XX ± .01		TOLERANCES ± 0° 30'		
.XXX ± .005				
DRAWN		DATE	FINAL APPROVAL	DATE
J. JENSEN		11/23/64		
CHECKED		DATE		
F.S.L.		11/23/64		
ELECT. DES.		DATE		
3/31/65				
MECH. DES.		DATE		
12/24/64				
SHEET		MS4231		C
REV. LTR.				

MS4231

METAL STAMP TMC P/No. 1/8 HIGH GOTHIC W/LATEST REV. LETTER