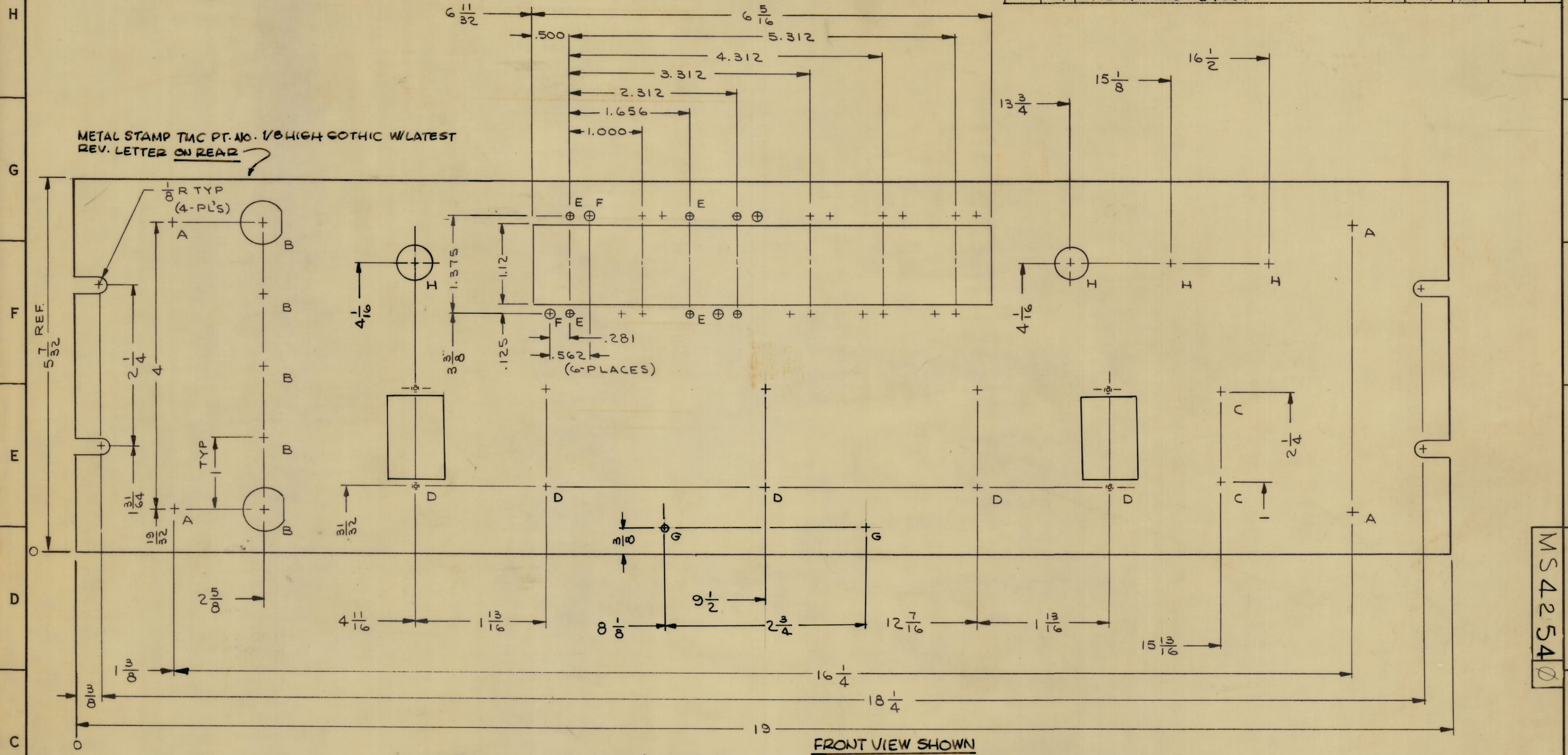
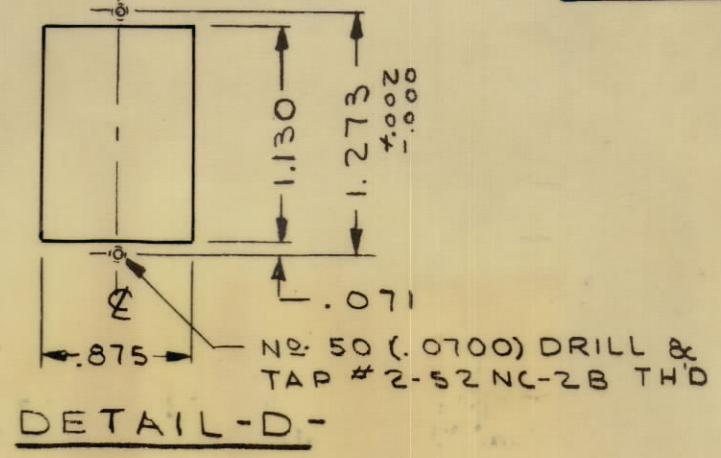
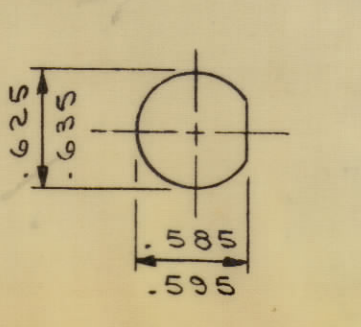


REVISIONS						
ZONE	SYM	DESCRIPTION	DATE	E.M.N. NO.	DRAFT	CHKD
	X	EXP. RELEASE	1/6/65		JL	
	X ₁	TMC P/N WAS MS4054	1.13.65	X ₁	JLB	



METAL STAMP TMC PT. NO. 1/8 HIGH GOTHIC W/LATEST REV. LETTER ON REAR

HOLE LEGEND		
HOLE	DESCRIPTION	REQ'D
A	13/64 DIA	4
B	SEE DETAIL	5
C	15/32 DIA	2
D	SEE DETAIL	5
E	9/64 DIA	14
F	5/32 DIA	12
G	NO. 48 (.0760) DRILL	2
H	13/32	4



- MACHINING:**
- MILL ALL EDGES.
 - HOLES MUST BE DRILLED, UNLESS OTHERWISE SPECIFIED.
 - LATERAL BOW OF PANEL MUST BE KEPT TO .031 TOLERANCE.
 - PANEL MUST BE FREE OF ALL MACHINING MARKS, GOUGES AND SCRATCHES. IF NECESSARY, SAND FRONT OF PANEL WITH NO. 120 GRIT SANDPAPER.
- FINISH NOTES:**
- S404 - IRIDITE 14-2 AL-COAT.
 - S114 - ZINC CHROMATE PRIMER) FRONT AND
 - S115 - SMOOTH GRAY ENAMEL) EDGES ONLY

NOTES

RTIE-1	
QTY./UNIT	MODEL USED ON
SCALE	ASSY. NO.
1:1	

THE CONTENTS OF THIS DRAWING ARE THE EXCLUSIVE PROPERTY OF THE TECHNICAL MATERIEL CORP. ITS UNAUTHORIZED USE OR REPRODUCTION IN WHOLE OR IN PART IS STRICTLY FORBIDDEN.

REF. LD 1721

REQ'D.	ITEM	PART NUMBER	DESCRIPTION	SYMBOL
F. E. EATON LIST OF MATERIAL				
MATERIAL		THE TECHNICAL MATERIEL CORP. MAMARONECK, NEW YORK		
3/16 THK ALUMINUM 2024-T3		TITLE PANEL, FRONT		
FINISH		DRAWN J. LESHINSKI		
SEE NOTES		DATE 1/6/65		
UNLESS OTHERWISE SPECIFIED DIMENSIONS ARE IN INCHES AND INCLUDE CHEMICALLY APPLIED OR PLATED FINISHES		CHECKED JLB		
DECIMALS .X ± .05 .XX ± .01 .XXX ± .005		ELECT. DES. W. JORDAN		
FRACTIONS ± 1/64 ANGLES ± 0° 30'		DATE 5/25/65		
		FINAL APPROVAL [Signature]		
		DATE 5/25/65		
		MS4254		
		SHEET		
		REV. LTR.		

MS4254