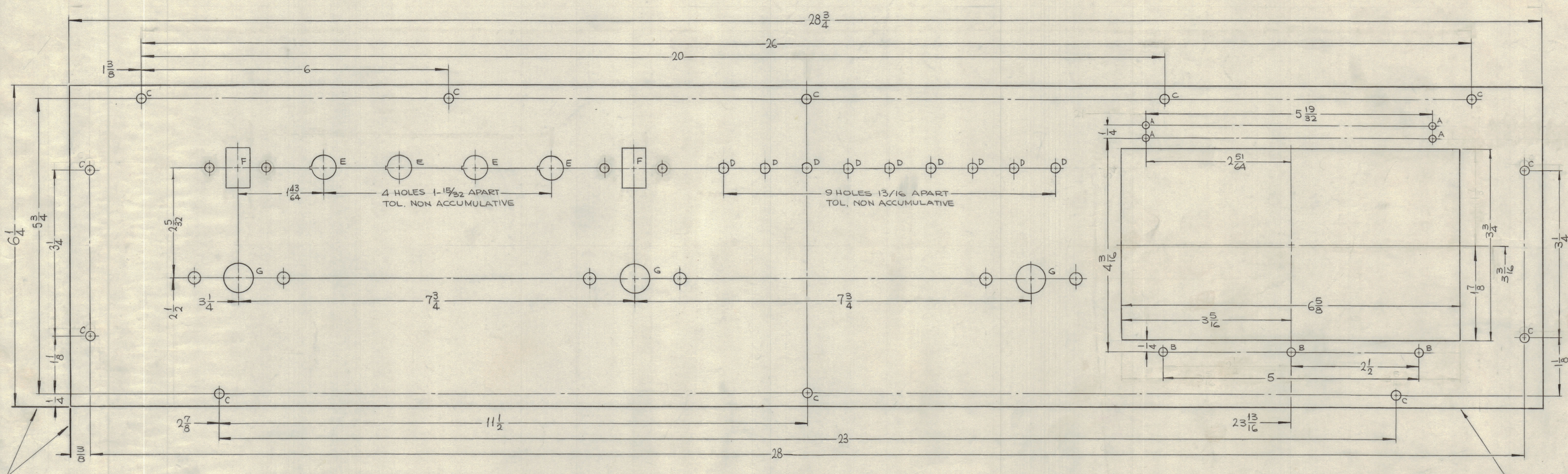


REVISIONS						
ZONE	SYM	DESCRIPTION	DATE	E.M.N. NO.	DRAFT	CHKD
X1		1/8 DIA. WAS 1/4, 4 HOLES WERE 21" FROM EDGE	4-2-65	X1	SRG	
		ORIGINAL RELEASE FOR PRODUCTION	5-7-67		CV	

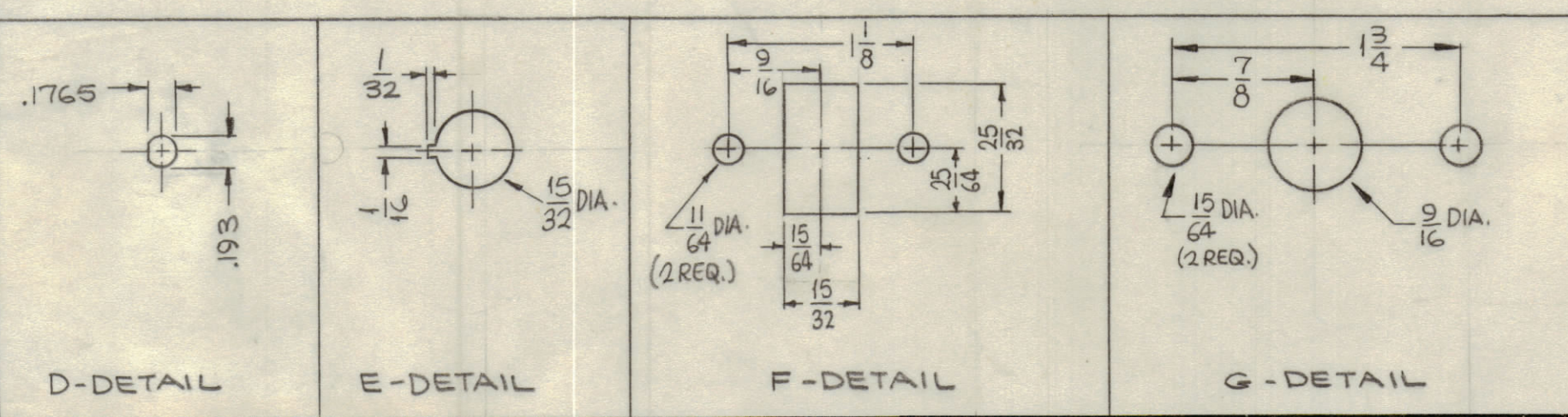


FRONT VIEW SHOWN

LOCATING BASE LINES.

HOLES	DESCRIPTION	REQ.
A	1/8 DIA.	4
B	5/32 DIA.	3
C	15/64 DIA.	12
D	SEE DETAIL	9
E		4
F		2
G	SEE DETAIL	3

METAL STAMP TMC PART NO. (MS 4285) 1/8 HIGH GOTHIC W/LATEST REV. LETTER ON REAR OF PANEL.



MACHINING:

- MILL ALL EDGES.
- HOLES MUST BE DRILLED, UNLESS OTHERWISE SPECIFIED.
- LATERAL BOW OF PANEL MUST BE KEPT TO .031 TOLERANCE.
- PANEL MUST BE FREE OF ALL MACHINING MARKS, GOUGES AND SCRATCHES. IF NECESSARY, SAND FRONT OF PANEL WITH NO. 120 GRIT SANDPAPER.

FINISH NOTES:

- S404 - IRIDITE 14-2 AL-COAT.
- S114 - ZINC CHROMATE PRIMER FRONT AND EDGES ONLY
- S115 - SMOOTH GRAY ENAMEL

NOTES

PX 94C
REF: LD 1843

REQ'D.	ITEM	PART NUMBER	DESCRIPTION	SYMBOL
	F. BUDETTI		LIST OF MATERIAL	
MATERIAL				
1/8 THICK ALUMINUM 5052-H32				
FINISH				
SEE NOTE				
THE TECHNICAL MATERIEL CORP. MAMARONECK, NEW YORK				
TITLE: PANEL, FRONT				
UNLESS OTHERWISE SPECIFIED DIMENSIONS ARE IN INCHES AND INCLUDE CHEMICALLY APPLIED OR PLATED FINISHES		DRAWN	DATE	FINAL APPROVAL
SCALE 1:1		SRG	3-25-65	[Signature]
THE CONTENTS OF THIS DRAWING ARE THE EXCLUSIVE PROPERTY OF THE TECHNICAL MATERIEL CORP. ITS UNAUTHORIZED USE OR REPRODUCTION IN WHOLE OR IN PART IS STRICTLY FORBIDDEN.		CHECKED	DATE	DATE
DECIMALS ±.05		ELECT. DES.		DATE
.XX ± .01		MECH. DES.		DATE
.XXX ± .005		TOLERANCES		DATE
FRACTIONS ± 1/64		ANGLES ± 0° 30'		REV. LTR.
		MS4285		
		SHEET		

MS 4285