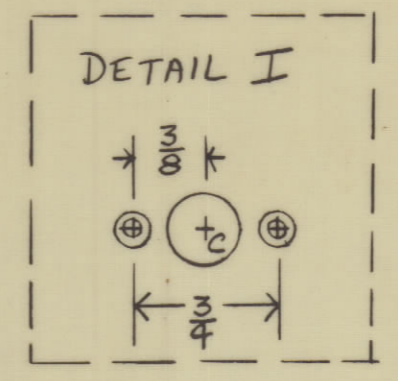
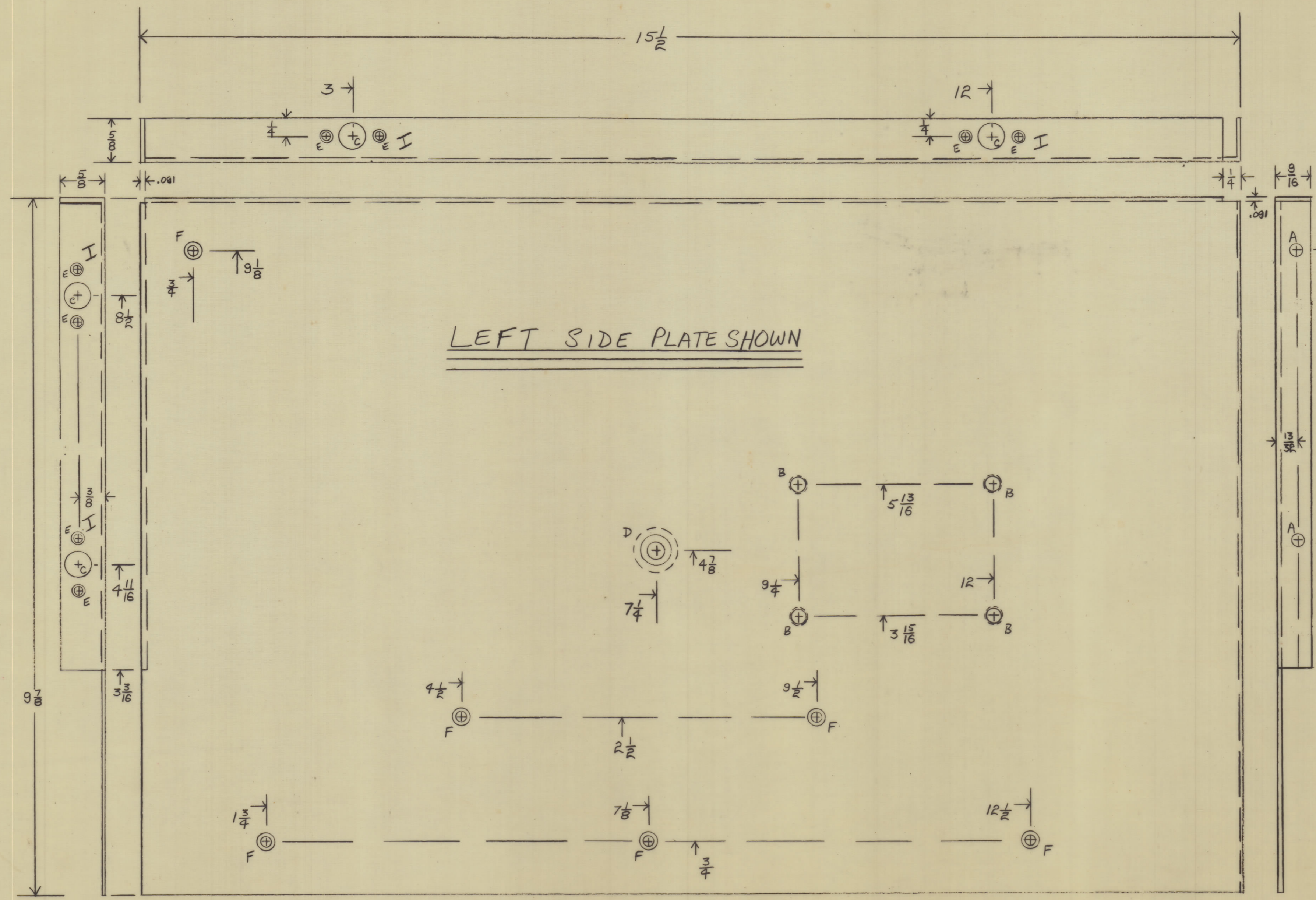


REVISIONS							
ZONE	SYM	DESCRIPTION	DATE	E.M.N. NO.	DRAFT	CHKD	APPD
Ø		ORIGINAL RELEASE	5/19/69				



KEY	DESCRIPTION	QTY.
A	7/16 HOLE	2
B	8-32 P.C.M. NUT	4
C	3/8" HOLE	4
D	.411-.413	1
E	4-40 CKS	8
F	8-32 CKS	8

NOTE
 D - 5/16-24 NUT-STEEL-NICKEL
 FINISH - INSERT BEFORE
 IRIDITING PLATE.
 TO BE SUPPLIED BY

RIGHT SIDE PLATE - PUNCHING DETAIL IDENTICAL TO LEFT SIDE PLATE
 BENDS REVERSED
 COUNTER SINKS ON OPPOSITE SIDE
 PEM NUTS - INSERTED ON OPPOSITE SIDE

MATERIAL: .091 ALUMINUM 5052-H32
 FINISH: #14 IRIDITE

MS4347

FSA-3
 S401 - (810519)

THE CONTENTS OF THIS DRAWING ARE THE EXCLUSIVE PROPERTY OF THE TECHNICAL MATERIEL CORP. ITS UNAUTHORIZED USE OR REPRODUCTION IN WHOLE OR IN PART IS STRICTLY FORBIDDEN.

REQ'D.	ITEM	PART NUMBER	DESCRIPTION	SYMBOL
LIST OF MATERIAL				
MATERIAL			THE TECHNICAL MATERIEL CORP. MAMARONECK, NEW YORK	
FINISH			TITLE PLATE, SIDE, LEFT & RIGHT	
QTY./UNIT	MODEL USED ON	ASBY. NO.	UNLESS OTHERWISE SPECIFIED DIMENSIONS ARE IN INCHES AND INCLUDE CHEMICALLY APPLIED OR PLATED FINISHES	DRAWN DATE
SCALE	CODE	S401 - (810519)	DECIMALS X ± .05 XX ± .01 XXX ± .005	CHECKED DATE
			TOLERANCES FRACTIONS ± 1/64 ANGLES ± 0° 30'	ELECT. DES. DATE
			MECH. DES. DATE	DATE
			SHEET	REV. LTR.

NOTES