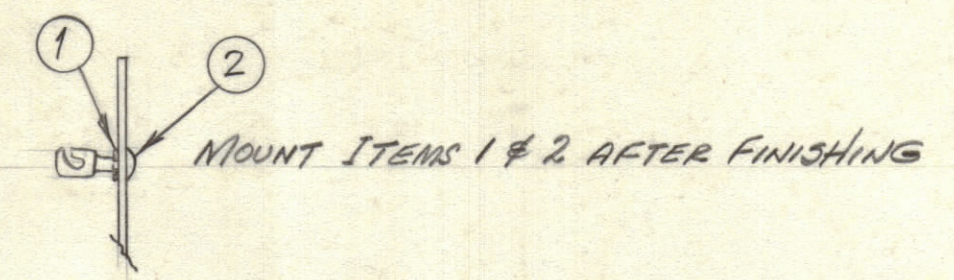
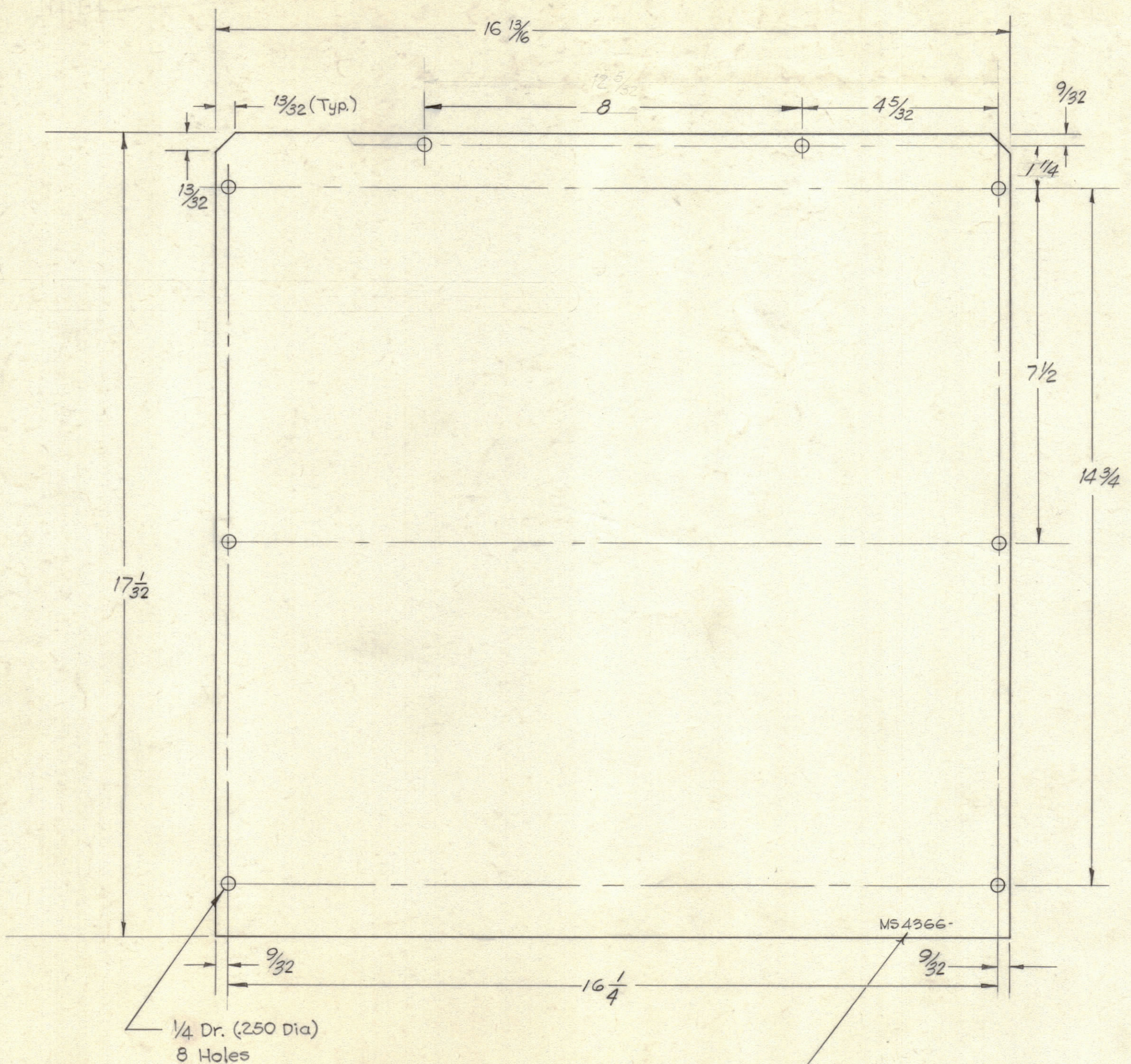


REVISIONS							
ZONE	SYM	DESCRIPTION	DATE	E.M.N. NO.	DRAFT	CHKD	APPD
	X	ADDED ITEMS 1 & 2	5-4-65	X1	HGA		
	Q	ORIGINAL RELEASE FOR PRODUCTION	7-28-66	Q	RME		



METAL STAMP TMC PART NO.  
1/8 HIGH GOTHIC W/LATEST  
REVISION LETTER.

NOTES:  
1. Make from 1/16 (.062) Thk Stk.

MS4366  
Q

REQ'D.	ITEM	PART NUMBER	DESCRIPTION	SYMBOL
8	2	FS110-1	STUD, TURNLOCK	
8	1	FS109-3	RING, RETAINING	

LIST OF MATERIAL Formerly 5013-10

MATERIAL 1/16 (.062) Thk Stk 5052-H32 ALUM.	THE TECHNICAL MATERIEL CORP. MAMARONECK, NEW YORK
FINISH S404-IRIDIOTE	TITLE COVER, TOP & BOTTOM

UNLESS OTHERWISE SPECIFIED DIMENSIONS ARE IN INCHES AND INCLUDE CHEMICALLY APPLIED OR PLATED FINISHES	DRAWN <i>[Signature]</i>	DATE 12/30/64	FINAL APPROVAL <i>[Signature]</i>	DATE 7/28/65
DECIMALS .X ± .05 .XX ± .01 .XXX ± .005	TOLERANCES	FRACTIONS ± 1/64 ANGLES ± 0° 30'	ELECT. DES. <i>[Signature]</i>	DATE 2/16/65
I. DO NOT SCALE DRAWING.			MECH. DES. <i>[Signature]</i>	DATE 2/16/65
NOTES THE CONTENTS OF THIS DRAWING ARE THE EXCLUSIVE PROPERTY OF THE TECHNICAL MATERIEL CORP. ITS UNAUTHORIZED USE OR REPRODUCTION IN WHOLE OR IN PART IS STRICTLY FORBIDDEN.			SHEET MS4366	