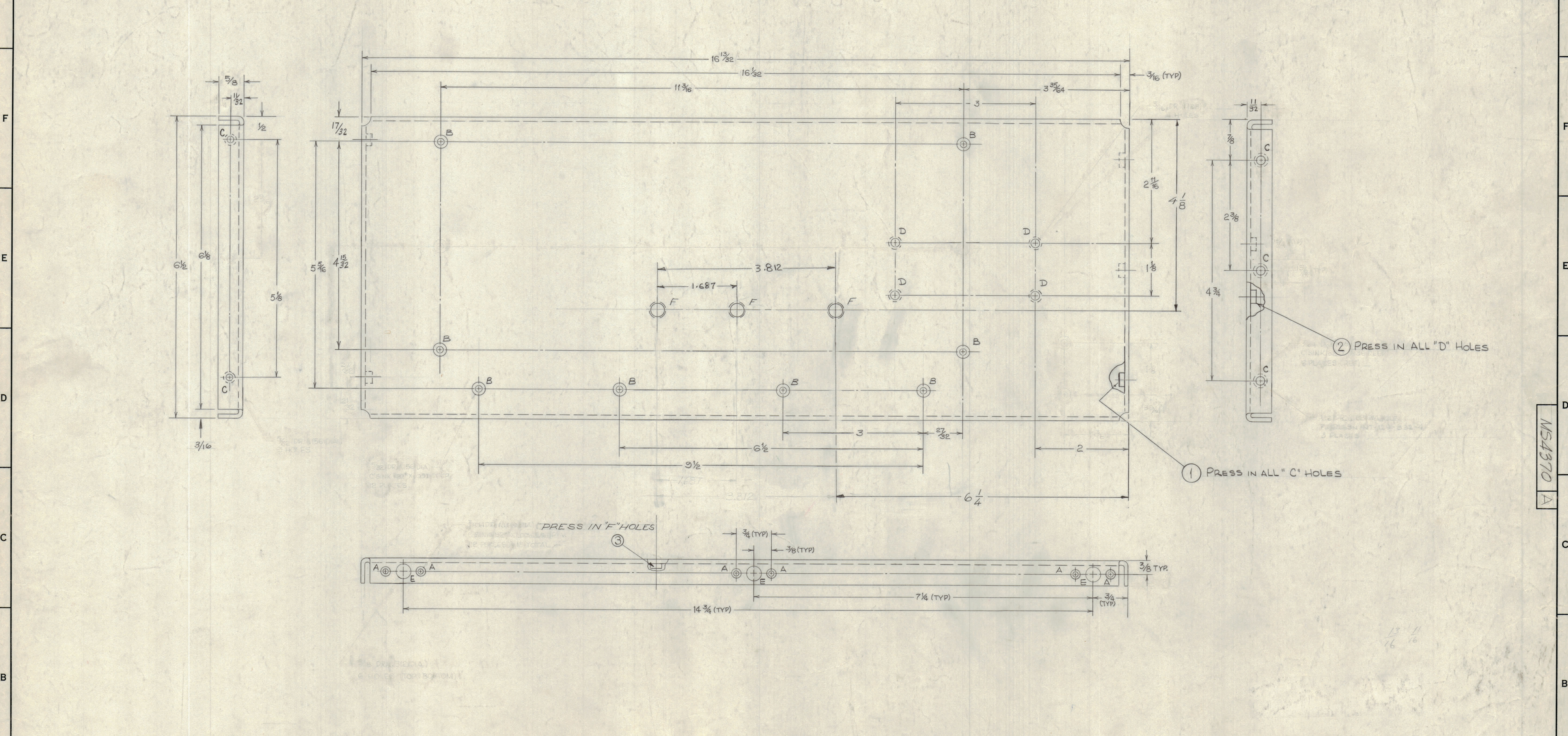


HOLE	DESCRIPTION	QTY.
A	.104 DIA. 82° C'SINK TO .204 DIA.	12
B	.144 DIA. 82° C'SINK TO .284 DIA.	8
C	.221-.224 DIA.	5
D	.250-.253 DIA.	4
E	3/8 DIA.	6
F	.277-.280 DIA.	3

		REVISIONS					
ZONE	SYM	DESCRIPTION	DATE	E.M.N. NO.	DRAFT	CHKD	APPD
	X1	DELETED 7/4 DIA. (109D) SINK HOLES, 6 PLACES; 2.21-.224 DIA. HOLE WAS 3/16, 3 PLACES; 3/8 WAS 1/2, 109D, WAS 7/8 DIA. 4.2.65	4.2.65	X1	HLA		
		ADD. 17. 2; 1.44 DIA. WAS .156; .221-.224 DIA. WAS .156; .250-.253 DIA. WAS 3/16; DELETED (4) 3/32 HOLES.					
	Q	ORIGINAL RELEASE FOR PRODUCTION	7-28-44		RME		
	A	REV & UPDATED	22669/19294	GE	Jde	g/c	



UNLESS OTHERWISE SPECIFIED:

1. USE MATERIAL THICKNESS FOR MAXIMUM RADIUS ON ALL BENDS
2. ALL ANGULAR BENDS 90 DEGREES
3. REMOVE ALL BURRS AND SHARP EDGES
4. MOUNT INSERTS AFTER FINISHING

NOTES

1. DO NOT SCALE DRAWING.

THE CONTENTS OF THIS DRAWING ARE THE EXCLUSIVE PROPERTY OF THE TECHNICAL MATERIEL CORP. ITS UNAUTHORIZED USE OR REPRODUCTION IN WHOLE OR IN PART IS STRICTLY FORBIDDEN.

REQ'D.	ITEM	PART NUMBER	DESCRIPTION	SYMBOL
3	3	NT129-1224-4	NUT, PLAIN SPLINE	
4	2	NT129-1032-4	NUT, PLAIN, SWAGE	
5	1	NT129-832-4	NUT, PLAIN, SWAGE	

LIST OF MATERIAL FORMERLY SO13-9

MATERIAL	5052-H32 ALUMINUM .080 THICK STOCK	TITLE	THE TECHNICAL MATERIEL CORP. MAMARONECK, NEW YORK
FINISH	S404 IRIDIOTE	DATE	12-30-64
UNLESS OTHERWISE SPECIFIED DIMENSIONS ARE IN INCHES AND INCLUDE CHEMICALLY APPLIED OR PLATED FINISHES		CHECKED	DATE
DECIMALS	X ± .05 XX ± .01 XXX ± .005	DATE	2/3/65
FRACTIONS	± 1/16 ± 1/32 ± 0° 30'	DATE	7/25/64
TOLERANCES		DATE	8/16/65

13 1/16
16

1	CMR-4	ASS'Y. NO.	
QTY./UNIT	CMR-1	CODE	
SCALE	1/1		
THE CONTENTS OF THIS DRAWING ARE THE EXCLUSIVE PROPERTY OF THE TECHNICAL MATERIEL CORP. ITS UNAUTHORIZED USE OR REPRODUCTION IN WHOLE OR IN PART IS STRICTLY FORBIDDEN.			

MS4370 A

MS4370 A