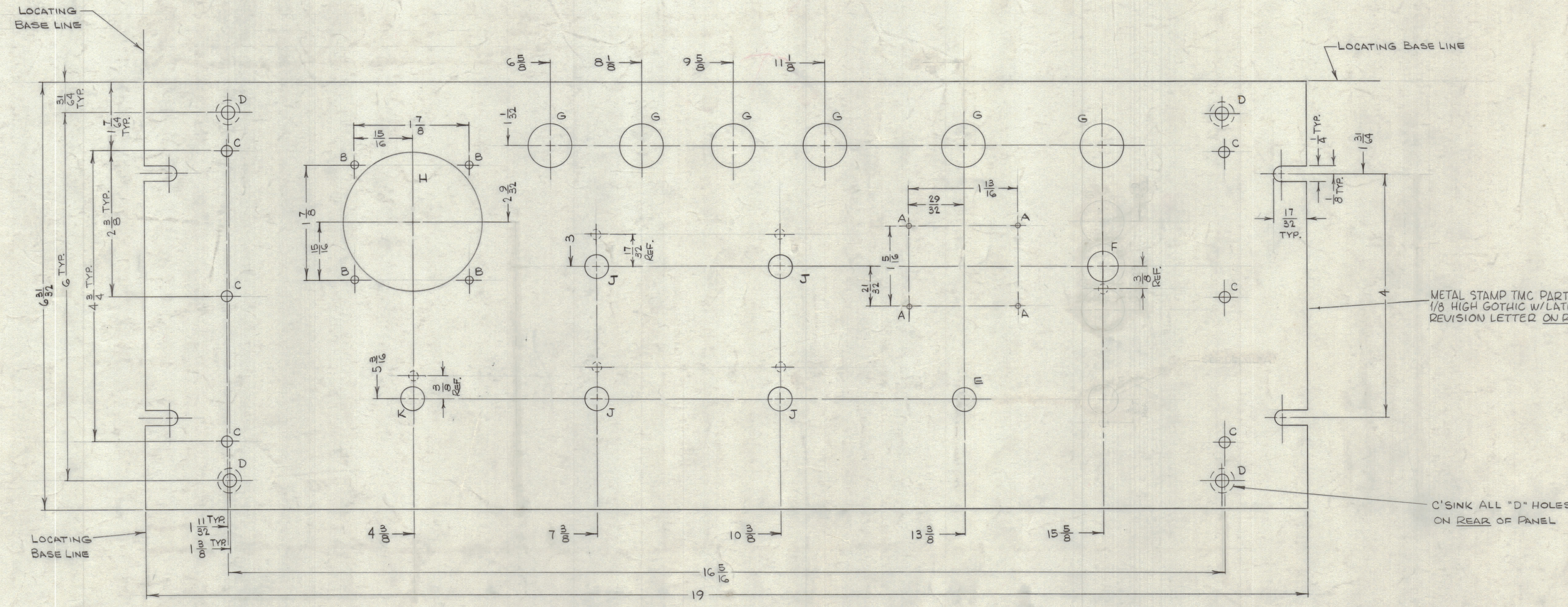


REVISIONS						
ZONE	SYM	DESCRIPTION	DATE	E.M.N. NO.	DRAFT	CHKD
X1		REDRAWN (FORMERLY 5013-1B)	4-6-65	X1	HJA	
X2		DELETED "G" HOLE; RELOCATED "F" HOLE; ADD. DETAILS "F", "J" & "K"	4-26-65	X2	HCA	
Q		ORIGINAL RELEASE FOR PRODUCTION	7-28-66	Q	RME	

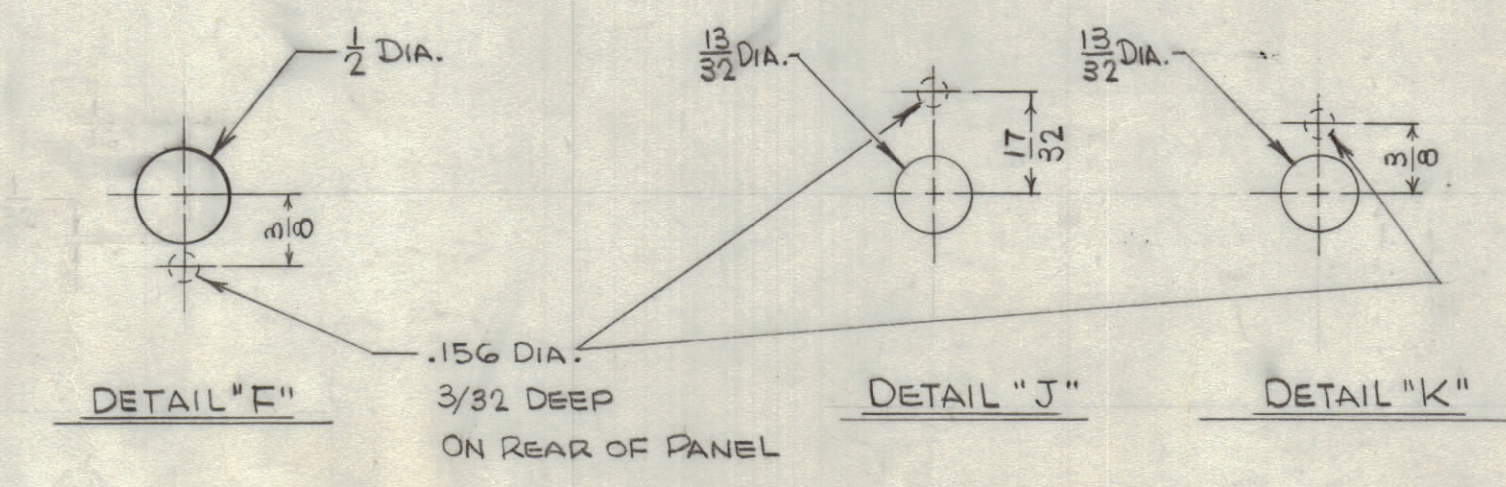


HOLE	DESCRIPTION	QTY
A	#47 DR. (.078 DIA.)	4
B	1/8 DIA.	4
C	3/16 DIA.	6
D	.196 DIA., C'SINK 82° TO .390 DIA. ON REAR	4
E	13/32 DIA.	1
F	SEE DETAIL	1
G	45/64 DIA.	6
H	2 1/4 DIA.	1
J	SEE DETAIL	4
K	SEE DETAIL	1

FINISH NOTES:
 1. S404 - IRIDITE 14-2 AL-COAT.
 2. S114 - ZINC CHROMATE PRIMER FRONT AND
 3. S115 - SMOOTH GRAY ENAMEL } EDGES ONLY
 OR

PRIME & PAINT PER CUSTOMER'S SPECIFICATIONS

MACHINING:
 1. MILL ALL EDGES.
 2. HOLES MUST BE DRILLED, UNLESS OTHERWISE SPECIFIED.
 3. LATERAL BOW OF PANEL MUST BE KEPT TO .031 TOLERANCE.
 4. PANEL MUST BE FREE OF ALL MACHINING MARKS, GOUGES AND SCRATCHES. IF NECESSARY, SAND FRONT OF PANEL WITH NO. 120 GRIT SANDPAPER.



REF: LD1784

REQ'D.	ITEM	PART NUMBER	DESCRIPTION	SYMBOL
LIST OF MATERIAL				
MATERIAL 3/16 (.187) THK. ALUM. 2024-T3			THE TECHNICAL MATERIEL CORP. MAMARONECK, NEW YORK	
FINISH SEE NOTE			TITLE PANEL, FRONT	
UNLESS OTHERWISE SPECIFIED DIMENSIONS ARE IN INCHES AND INCLUDE CHEMICALLY APPLIED OR PLATED FINISHES		DRAWN H. JUSTIN	DATE 4-6-65	FINAL APPROVAL [Signature]
DECIMALS XX ± .05 XXX ± .005	TOLERANCES ± 1/64 ANGLES ± 0° 30'	ELECT. DES. [Signature]	DATE 7-28-66	DATE 7-28-66
NOTES		MECH. DES. [Signature]	DATE	DATE
THE CONTENTS OF THIS DRAWING ARE THE EXCLUSIVE PROPERTY OF THE TECHNICAL MATERIEL CORP. ITS UNAUTHORIZED USE OR REPRODUCTION IN WHOLE OR IN PART IS STRICTLY FORBIDDEN.		PART NUMBER MS4372		REV. LTR. Q

NOTES

MS 4372

Q

C

B

A