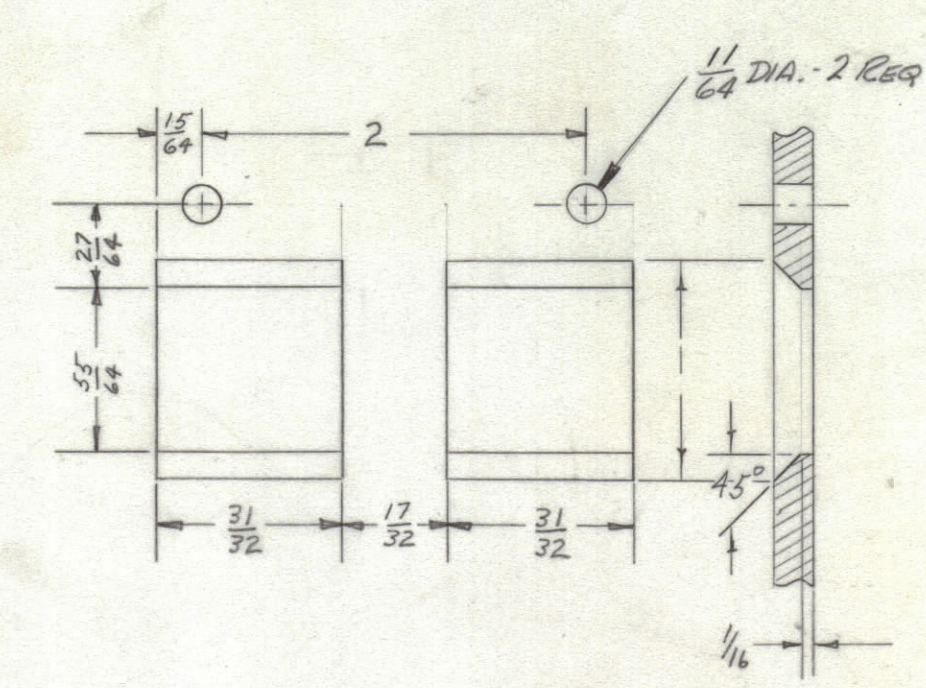
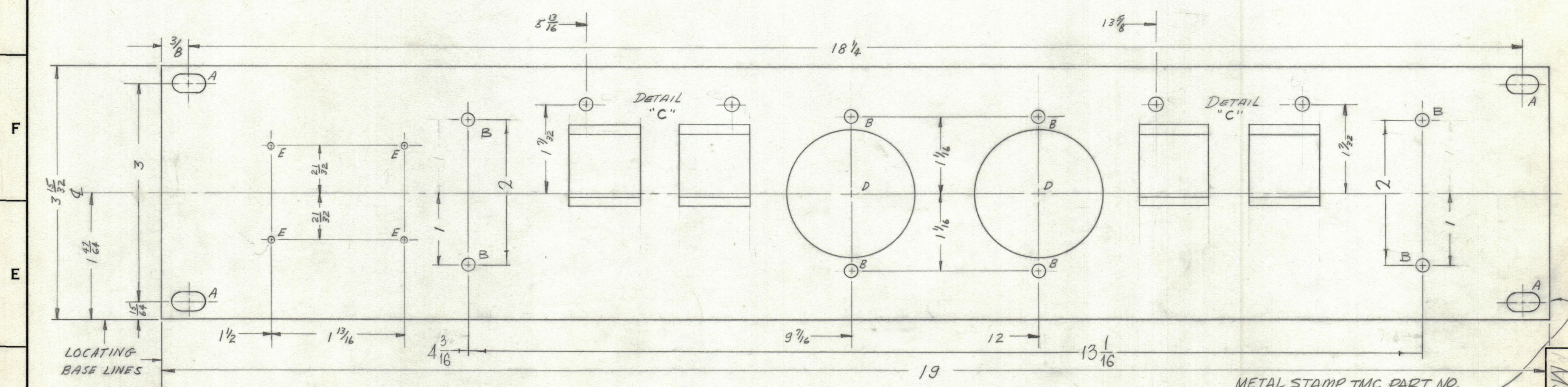


- A-  $\frac{1}{4} \times \frac{29}{64}$  SLOT 4 REQ.
- B-  $\frac{1}{16}$  DIA. 8 REQ.
- C- SEE DETAIL 2 REQ.
- D-  $1\frac{3}{4}$  DIA. 2 REQ.
- E-  $.078$  DIA. 4 REQ.

REVISIONS						
ZONE	SYM	DESCRIPTION	DATE	E.M.N. NO.	DRAFT	CHKD
XI		REVISED & REDRAWN	2/13/65		B.D.	
Ø		ORIGINAL RELEASE FOR PRODUCTION	2/27/65		H.C.A.	



**FINISH NOTES:**

- S404 - IRIDITE 14-2 AL-COAT.
- S114 - ZINC CHROMATE PRIMER } FRONT AND
- S115 - SMOOTH GRAY ENAMEL } EDGES ONLY

**MACHINING:**

- MILL ALL EDGES.
- HOLES MUST BE DRILLED, UNLESS OTHERWISE SPECIFIED.
- LATERAL BOW OF PANEL MUST BE KEPT TO .031 TOLERANCE.
- PANEL MUST BE FREE OF ALL MACHINING MARKS, GOUGES AND SCRATCHES. IF NECESSARY, SAND FRONT OF PANEL WITH NO. 120 GRIT SANDPAPER.

W/LATEST REVISION LETTER.

METAL STAMP TMC PART NO.  $\frac{1}{8}$  HIGH GOTHIC W/LATEST REVISION LETTER ON REAR.

MS4381 Ø

REF: LD 1786

REQ'D.	ITEM	PART NUMBER	DESCRIPTION	SYMBOL
<b>LIST OF MATERIAL</b>				
MATERIAL		THE TECHNICAL MATERIEL CORP.		
3/16 ALUMINUM		MAMARONECK, NEW YORK		
2024-T3		TITLE		
SEE NOTES		PANEL, FRONT, UTILITY OUTLET		
UNLESS OTHERWISE SPECIFIED		DRAWN		DATE
DIMENSIONS ARE IN INCHES AND INCLUDE		CHECKED		DATE
CHEMICALLY APPLIED OR PLATED FINISHES		ELECT. DES.		DATE
DECIMALS		MECH. DES.		DATE
.X ± .05		RJC		MS4381
.XX ± .01		DATE		Ø
.XXX ± .005		DATE		REV. LTR.
TOLERANCES		SHEET		
FRACTIONS				
± 1/64				
ANGLES				
± 0° 30'				

Q'TY/UNIT	MODEL USED ON	ASS'Y. NO.
1	APP-11	
SCALE	CODE	

THE CONTENTS OF THIS DRAWING ARE THE EXCLUSIVE PROPERTY OF THE TECHNICAL MATERIEL CORP. ITS UNAUTHORIZED USE OR REPRODUCTION IN WHOLE OR IN PART IS STRICTLY FORBIDDEN.

NOTES