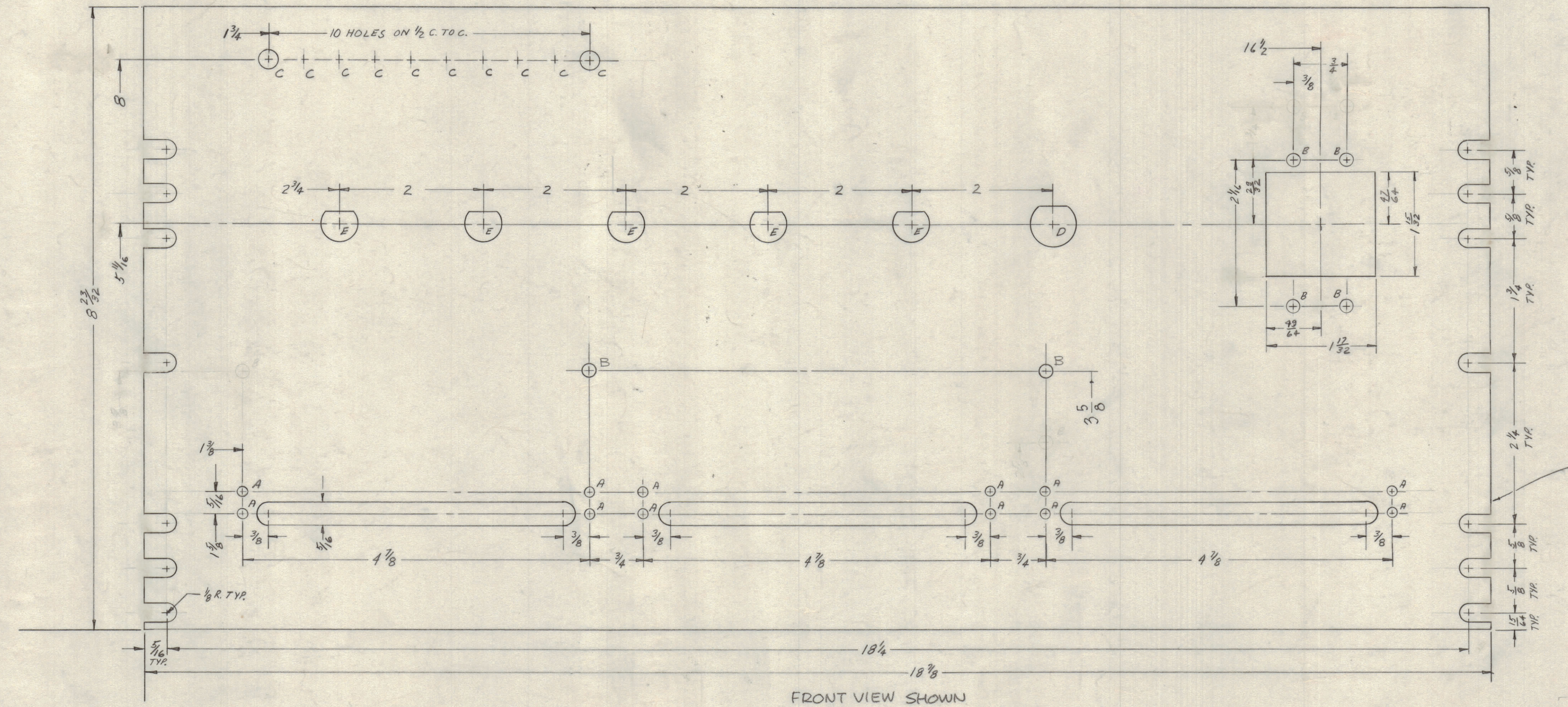
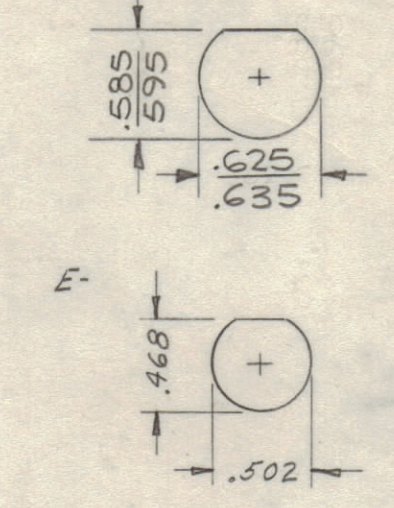


REVISIONS						
ZONE	SYM	DESCRIPTION	DATE	E.M.N. NO.	DRAFT	CHKD
X		EXPERIMENTAL RELEASE	2/23/65			
X1		① B HOLES DELETED, ② B HOLES RELOCATED	8/18/65			
X2		ON D DETAIL DIM'S WERE SCA-.625	8/23/67			
Ø		ORIGINAL RELEASE FOR PRODUCTION	2/27/67			L.A.K.



- A - 1/8 DIA 12 REQ.
- B - 1/16 DIA 6 REQ.
- C - 1/4 DIA 10 REQ.
- D - 1 REQ.
- E - 5 REQ.



METAL STAMP TMC  
PART NO. 118 HIGH  
GOTHIC, W/LATEST  
REV. LETTER ON REAR.

**MACHINING:**

- MILL ALL EDGES.
- HOLES MUST BE DRILLED, UNLESS OTHERWISE SPECIFIED.
- LATERAL BOW OF PANEL MUST BE KEPT TO .031 TOLERANCE.
- PANEL MUST BE FREE OF ALL MACHINING MARKS, GOUGES AND SCRATCHES. IF NECESSARY, SAND FRONT OF PANEL WITH NO. 120 GRIT SANDPAPER.

**NOTES**

THE CONTENTS OF THIS DRAWING ARE THE EXCLUSIVE PROPERTY OF THE TECHNICAL MATERIEL CORP. ITS UNAUTHORIZED USE OR REPRODUCTION IN WHOLE OR IN PART IS STRICTLY FORBIDDEN.

REF: LD 1793

REQ'D.	ITEM	PART NUMBER	DESCRIPTION	SYMBOL
<b>LIST OF MATERIAL</b>				
MATERIAL			THE TECHNICAL MATERIEL CORP.	
FINISH			MAMARONECK, NEW YORK	
TITLE			FRONT PANEL MACHINING CENTER SHIELD	
QTY./UNIT	MODEL USED ON	ABS. NO.	DRAWN	DATE
1	TSTE-10K	AX-563		
SCALE	CODE		CHECKED	DATE
UNLESS OTHERWISE SPECIFIED DIMENSIONS ARE IN INCHES AND INCLUDE CHEMICALLY APPLIED OR PLATED FINISHES			ELECT. DES.	DATE
DECIMALS ± .005			MS 4395	
FRACTIONS ± 1/64			MECH. DES.	DATE
ANGLES ± 0° 30'			SHEET	
			REV. LTR.	

MS 4395

Ø