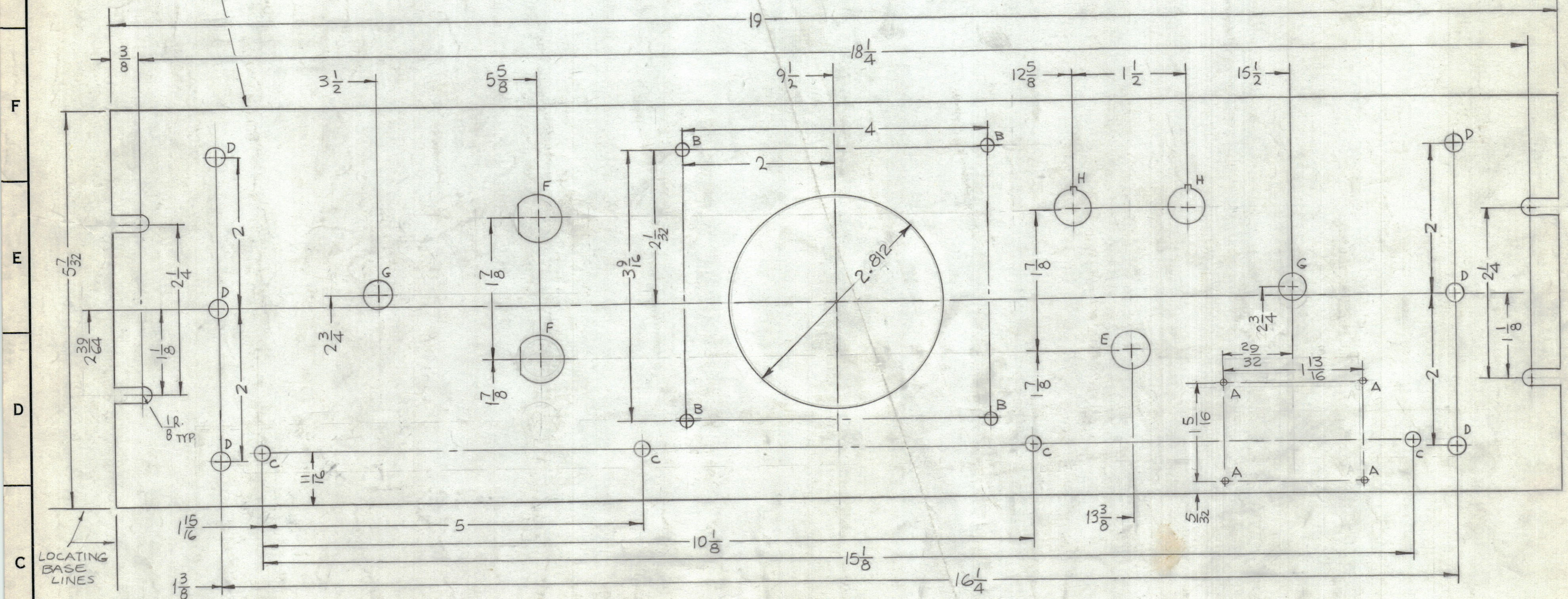
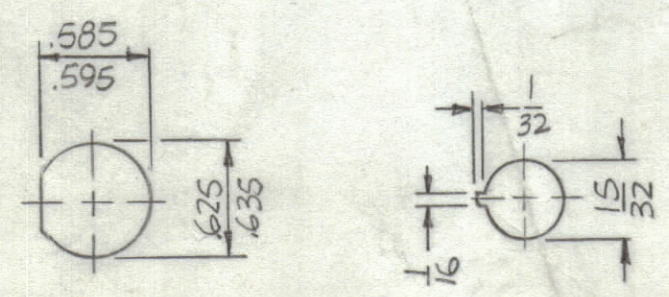


REVISIONS							
ZONE	SYM	DESCRIPTION	DATE	E.M.N. NO.	DRAFT	CHKD	APPD
	X9	COMPLETELY REVISED, RE-DRAWN	8-3-66	X9	JH		
		ORIGINAL RELEASE FOR PRODUCTION	11-22-66		RME		
A		DIM 2.812 DIA WAS 2 3/4, DIM 1 13/16 WAS 1 3/4 DIM 29/32 WAS 7/8 & DIM 1 5/16 WAS 1 1/4	2-16-67	17828	GDL	JIS	

MARK TMC P/N (MS 4396-)  
1/8 HIGH GOTHIC W/LATEST  
8 REV. LETTER (ON REAR.)



FRONT VIEW



DETAIL-F  
2 REQ.

DETAIL-H  
2 REQ.

**MACHINING:**

- MILL ALL EDGES.
- HOLES MUST BE DRILLED, UNLESS OTHERWISE SPECIFIED.
- LATERAL BOW OF PANEL MUST BE KEPT TO .031 TOLERANCE.
- PANEL MUST BE FREE OF ALL MACHINING MARKS, GOUGES AND SCRATCHES. IF NECESSARY, SAND FRONT OF PANEL WITH NO. 120 GRIT SANDPAPER.

**FINISH NOTES:**

- S404 - IRIDITE 14-2 AL-COAT.
- S114 - ZINC CHROMATE PRIMER } FRONT AND
- S115 - SMOOTH GRAY ENAMEL } EDGES ONLY

OR  
PRIME AND PAINT PER CUSTOMER'S SPECIFICATIONS.

HOLES	DESCRIPTION	REQ
A	.076 DIA.	4
B	11/64 DIA.	4
C	13/64 DIA.	4
D	15/64 DIA.	6
E	1/2 DIA.	1
F	SEE DETAIL	2
G	3/8 DIA.	2
H	SEE DETAIL	2

NOTES

QTY/UNIT	SCALE	MODEL USED ON	CODE	ASSY. NO.
	1:1	SWCA-3K	A	A5265

THE CONTENTS OF THIS DRAWING ARE THE EXCLUSIVE PROPERTY OF THE TECHNICAL MATERIEL CORP. ITS UNAUTHORIZED USE OR REPRODUCTION IN WHOLE OR IN PART IS STRICTLY FORBIDDEN.

REF: LD 1794

REQ'D	ITEM	PART NUMBER	DESCRIPTION	SYMBOL
F. BUDETTI LIST OF MATERIAL				
MATERIAL			THE TECHNICAL MATERIEL CORP.	
3/16 THICK ALUMINUM			MAMARONECK, NEW YORK	
2024-T3			TITLE	
FINISH			PANEL, FRONT	
SEE NOTES			DRAWN	
UNLESS OTHERWISE SPECIFIED			DATE	
DIMENSIONS ARE IN INCHES AND INCLUDE			8-3-66	
CHEMICALLY APPLIED OR PLATED FINISHES			DATE	
			11-19-66	
DECIMALS			ELECT. DES.	
.X ± .05			DATE	
.XX ± .01			11-22-66	
.XXX ± .005			MECH. DES.	
TOLERANCES			DATE	
FRACTIONS ± 1/64			11-21-66	
ANGLES ± 0° 30'			SHEET	
			1	

MS4396  
A