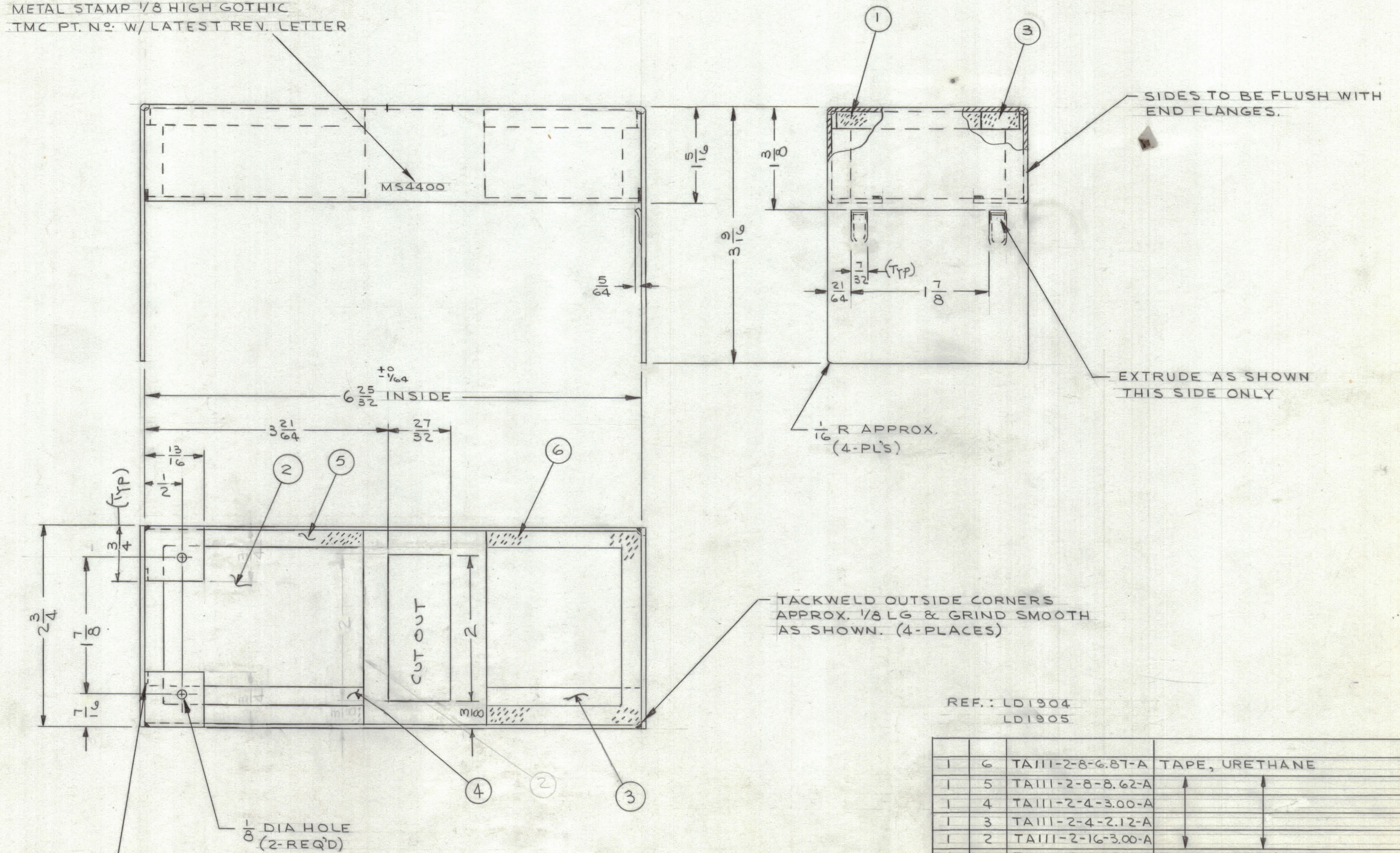


REVISIONS							
ZONE	SYM	DESCRIPTION	DATE	E.M.N. NO.	DRAFT	CHKD	APPD
	Ø	ORIGINAL RELEASE FOR PRODUCTION	5/18/65				

METAL STAMP 1/8 HIGH GOTHIC  
TMC PT. NO. W/LATEST REV. LETTER



TACKWELD ON TOP OF FLANGE ON  
INSIDE CORNERS APPROX 1/8 LG  
AS SHOWN.

- UNLESS OTHERWISE SPECIFIED:
1. USE MATERIAL THICKNESS FOR MAXIMUM RADIUS ON ALL BENDS
  2. ALL ANGULAR BENDS 90 DEGREES
  3. REMOVE ALL BURRS AND SHARP EDGES

NOTES

2	HAFR-1	
QTY/UNIT	MODEL USED ON	ASSY. NO.
SCALE 1/1	CODE	

THE CONTENTS OF THIS DRAWING ARE THE EXCLUSIVE PROPERTY OF THE TECHNICAL MATERIEL CORP. ITS UNAUTHORIZED USE OR REPRODUCTION IN WHOLE OR IN PART IS STRICTLY FORBIDDEN.

REF.: LD1904  
LD1905

REQ'D.	ITEM	PART NUMBER	DESCRIPTION	SYMBOL
1	6	TA111-2-8-6.87-A	TAPE, URETHANE	
1	5	TA111-2-8-8.62-A		
1	4	TA111-2-4-3.00-A		
1	3	TA111-2-4-2.12-A		
1	2	TA111-2-16-3.00-A		
1	1	TA111-2-16-2.12-A	TAPE, URETHANE	

LIST OF MATERIAL

MATERIAL .051THK ALUMINUM 5052-H32	THE TECHNICAL MATERIEL CORP. MAMARONECK, NEW YORK			
FINISH YELLOW IRIDITE PER S404	TITLE COVER, LEDEX			
UNLESS OTHERWISE SPECIFIED DIMENSIONS ARE IN INCHES AND INCLUDE CHEMICALLY APPLIED OR PLATED FINISHES	DRAWN J. LESHINSKI	DATE 5/17/65	FINAL APPROVAL <i>PC</i>	DATE 5/17/65
DECIMALS .X ± .05 .XX ± .01 .XXX ± .005	TOLERANCES		FRACTIONS ± 1/64 ANGLES ± 0° 30'	
MECH. DES. <i>Bull/Bome</i>		DATE 5/17/65	SHEET	

MS4400 Ø