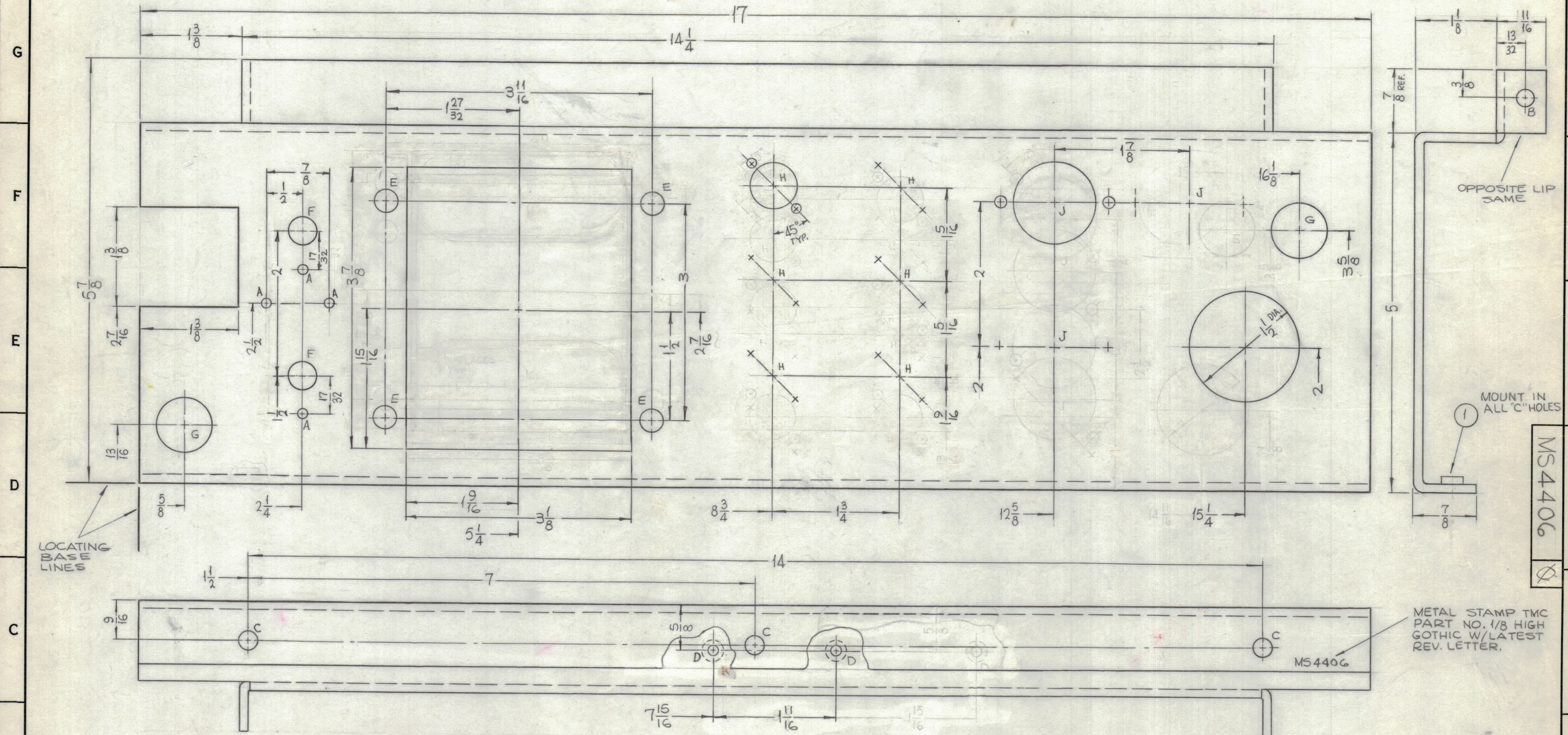


REVISIONS						
ZONE	SYM	DESCRIPTION	DATE	E.M.N. NO.	DRAFT	CHKD
	X	EXP RELEASE	3-5-65	X	SRG	
	X1	DIM 2-7/16 WAS 2 1/16, H HOLE DIM 15/16 WAS 1-1/2	3-16-65	X1	SRG	
	X2	H HOLES DIM 13/16 WAS 1", J HOLES DIM. 1" WAS 1 1/4, 2 WAS 2 1/2	3-19-65	X2	SRG	
	X3	1-1/2 DIA HOLE WAS 1-1/4, 2 WAS 1-1/8, 15 1/4 WAS 14 1/16	3-23-65	X3	SRG	
	X4	1" HOLE ADDED, 1 3/16 WAS 13/16, 2" WAS 1" FROM BEND LINE	5-13-65	X4	SRG	
	X5	2 A HOLES ADDED, HOLES FOR J WERE AT 45°	8-3-65	X5	SRG	
		DIM 10V WAS 16				
		1 D HOLE RE-LOCATED				
	Q	ORIGINAL RELEASE FOR PRODUCTION	8-25-66	Q	RME	



LOCATING
BASE
LINES

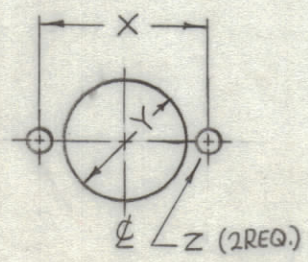
OPPOSITE LIP
SAME

MOUNT IN
ALL "C" HOLES

MS4406

METAL STAMP TMC
PART NO. 1/8 HIGH
GOTHIC W/LATEST
REV. LETTER.

HOLES	DESCRIPTION	REQ.
A	1/8 DIA.	4
B	15/64 DIA.	2
C	250-253 DIA.	3
D	DR. 144 DIA. C'SINK 82° X 284 DIA.	2
E	5/16 DIA.	4
F	3/8 DIA.	2
G	3/4 DIA.	2
H	SEE DETAIL	6
J	SEE DETAIL	3



DETAIL	X	Y DIA.	Z DIA.
H	7/8	5/8	1/8
J	1-1/2	1-1/8	5/32

UNLESS OTHERWISE SPECIFIED:

1. USE MATERIAL THICKNESS FOR MAXIMUM RADIUS ON ALL BENDS
2. ALL ANGULAR BENDS 90 DEGREES
3. REMOVE ALL BURRS AND SHARP EDGES
4. MOUNT INSERTS AFTER FINISHING

NOTES

Q'TY./UNIT	MODEL USED ON	ASS'Y. NO.
1	TST () 10K	AP126
SCALE 1:1	CODE A	

REF: LD1869

REQ'D.	ITEM	PART NUMBER	DESCRIPTION	SYMBOL
3	1	NT129-1032-6	NUT, PLAIN, SPLINE	C

F. BUDETTI LIST OF MATERIAL

MATERIAL	TITLE
1/8 THICK ALUMINUM 5052-H32	CHASSIS, RIGHT SIDE
FINISH S404 YELLOW IRIDITE	

THE TECHNICAL MATERIEL CORP.
MAMARONECK, NEW YORK

DRAWN	DATE	FINAL APPROVAL	DATE
SRG	2-17-65	[Signature]	8/25/66
CHECKED	DATE		
	8/24/66		

UNLESS OTHERWISE SPECIFIED
DIMENSIONS ARE IN INCHES AND INCLUDE
CHEMICALLY APPLIED OR PLATED FINISHES

DECIMALS	FRACTIONS
X ± .05	± 1/64
.XX ± .01	ANGLES ± 0° 30'
.XXX ± .005	

THE CONTENTS OF THIS DRAWING ARE THE EXCLUSIVE PROPERTY
OF THE TECHNICAL MATERIEL CORP. ITS UNAUTHORIZED USE OR
REPRODUCTION IN WHOLE OR IN PART IS STRICTLY FORBIDDEN.

MS4406

2 MIL 7/2/66

REV. LTR.