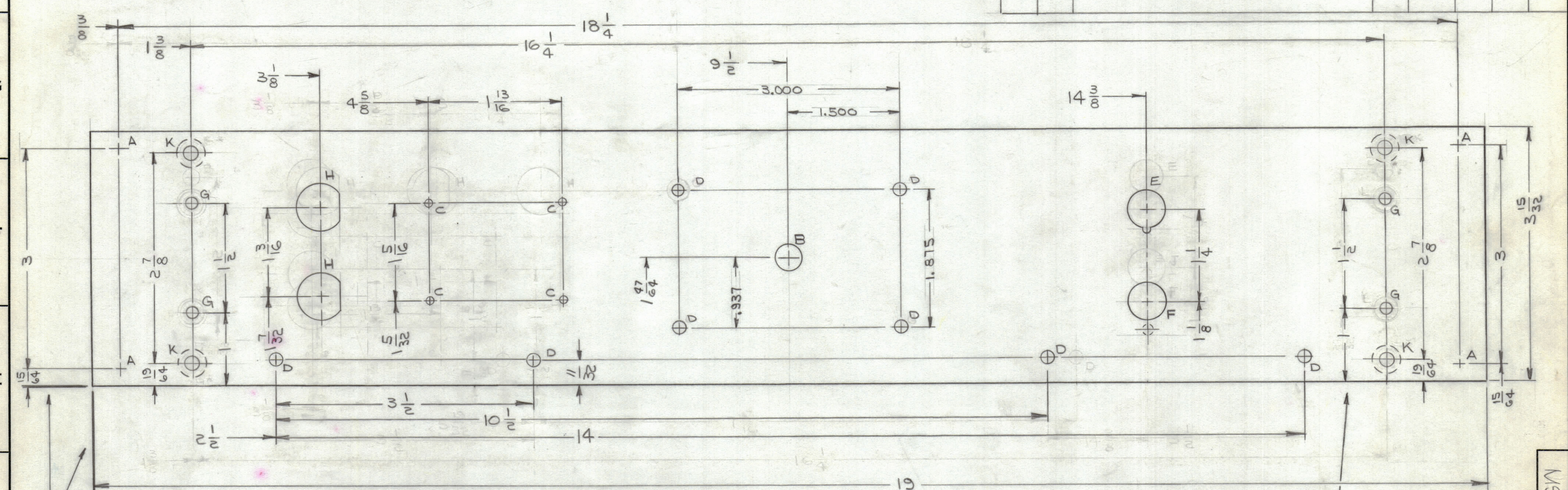
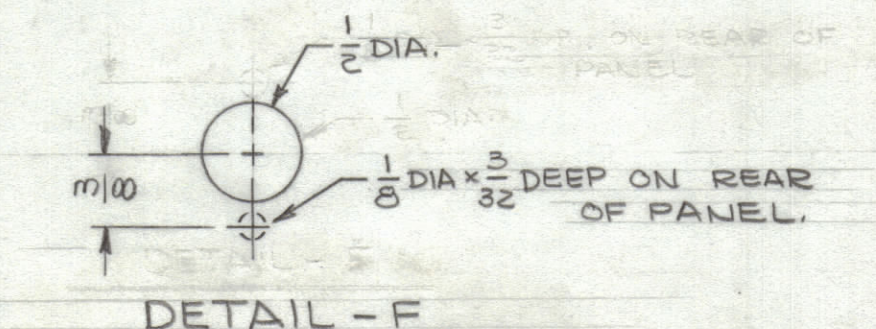
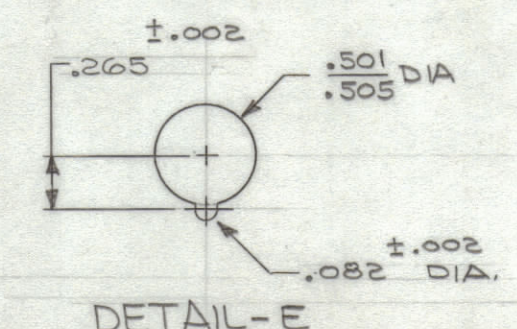


REVISIONS						
ZONE	SYM	DESCRIPTION	DATE	E.M.N. NO.	DRAFT	CHKD
X1		(4) "K" HOLES WERE "G" HOLES; (4) "L" HOLES ADDED	5/24/65	X1	JL	
X2		"L" HOLES WERE "K" HOLES (* NOTE DELETED)	4-1-65	X2	JL	
		HOLES UPDATED PER STANDARDS	5/24/65		JL	
		ORIGINAL RELEASE FOR PRODUCTION	5/24/65		JL	



1/8 HIGH GOTHIC, METAL STAMP TMC P/N, ON REAR, WITH LATEST REVISION LETTER



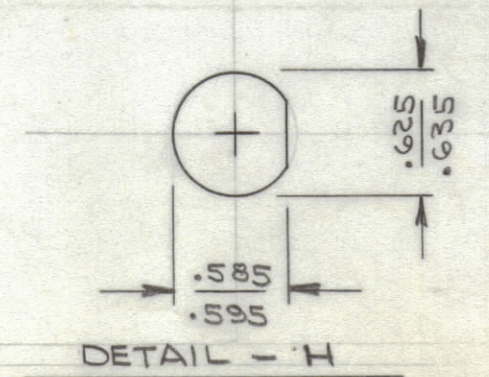
HOLE	DESCRIPTION	REQ.
A	1/4 x 29/64 SLOTS	4
B	3/8 DIA.	1
C	NO 46 DRILL (.076) DIA.	4
D	11/64 DIA.	8
E	SEE DETAIL	1
F	SEE DETAIL	1
G	3/16 DIA.	4
H	SEE DETAIL	2
K	.186 DIA, C'SINK 82° TO .390 DIA, ON REAR	4
L	.165 DIA, C'SINK 82° TO .337 DIA.	4

MACHINING:

- MILL ALL EDGES.
- HOLES MUST BE DRILLED, UNLESS OTHERWISE SPECIFIED.
- LATERAL BOW OF PANEL MUST BE KEPT TO .031 TOLERANCE.
- PANEL MUST BE FREE OF ALL MACHINING MARKS, GOUGES AND SCRATCHES. IF NECESSARY, SAND FRONT OF PANEL WITH NO. 120 GRIT SANDPAPER.

FINISH NOTES:

- S404 - IRIDITE 14-2 AL-COAT.
- S114 - ZINC CHROMATE PRIMER FRONT AND
- S115 - SMOOTH GRAY ENAMEL EDGES ONLY



NOTE: ON HOLES "G" INDICATES C'SINK ON REAR OF PANEL.

NOTES

REF: LD1822 (RSBA-1)
LD1827 (RCSA-1)

REQ'D.	ITEM	PART NUMBER	DESCRIPTION	SYMBOL
F. EATON LIST OF MATERIAL FORMALLY E3162B-11				
MATERIAL		3/16, ALUMINUM 2024-T3	THE TECHNICAL MATERIEL CORP. MAMARONECK, NEW YORK	
FINISH		SEE NOTES	TITLE PANEL, FRONT	
UNLESS OTHERWISE SPECIFIED DIMENSIONS ARE IN INCHES AND INCLUDE CHEMICALLY APPLIED OR PLATED FINISHES			DRAWN: JL CHECKED: JL DATE: 3-4-65 DATE: 5/24/65 DATE: 5/24/65	FINAL APPROVAL: JL DATE: 5/24/65
DECIMALS		FRACTIONS		MS4437
.X ± .05		± 1/64		
.XX ± .01		ANGLES ± 0° 30'		
.XXX ± .005		TOLERANCES		REV. LTR.

QTY./UNIT	MODEL USED ON	ASSY. NO.
1	RCSA-1	
1	RSBA-1	
SCALE	CODE	
1:1	A	

THE CONTENTS OF THIS DRAWING ARE THE EXCLUSIVE PROPERTY OF THE TECHNICAL MATERIEL CORP. ITS UNAUTHORIZED USE OR REPRODUCTION IN WHOLE OR IN PART IS STRICTLY FORBIDDEN.

MS4437