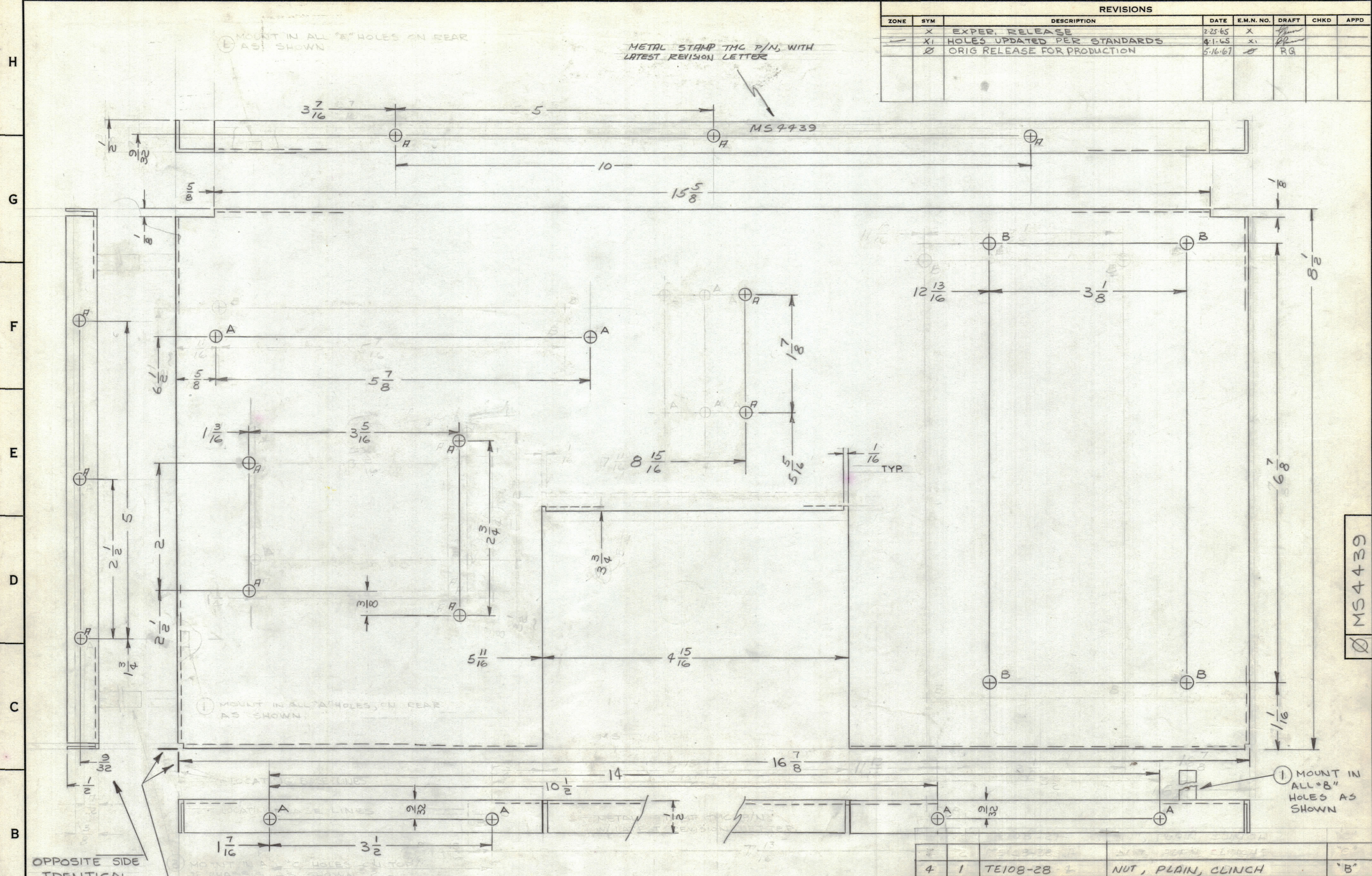


REVISIONS											
ZONE	SYM	DESCRIPTION	DATE	E.M.N. NO.	DRAFT	CHKD	APPD				
X		EXPER. RELEASE	2-25-65	X							
XI		HOLES UPDATED PER STANDARDS	4-1-65	XI							
Ø		ORIG RELEASE FOR PRODUCTION	5-16-67		RG						



HOLE	DESCRIPTION	REQ.
A	11/64 DIA	21
B	.189 DIA	4

- UNLESS OTHERWISE SPECIFIED:
1. USE MATERIAL THICKNESS FOR MAXIMUM RADIUS ON ALL BENDS
 2. ALL ANGULAR BENDS 90 DEGREES
 3. REMOVE ALL BURRS AND SHARP EDGES
 4. MOUNT INSERTS AFTER FINISHING
- NOTES

REQ'D.	ITEM	PART NUMBER	DESCRIPTION	SYMBOL
4	1	TE108-28	NUT, PLAIN, CLINCH	'B'

F. EATON LIST OF MATERIAL FORMALLY E3162B-8

MATERIAL .062, ALUMINUM 5052-H32

FINISH 3404 YEL. IRIDITE

THE TECHNICAL MATERIEL CORP. MAMARONECK, NEW YORK

TITLE CHASSIS, ELECTRICAL, MAIN

UNLESS OTHERWISE SPECIFIED DIMENSIONS ARE IN INCHES AND INCLUDE CHEMICALLY APPLIED OR PLATED FINISHES

DRAWN	DATE	FINAL APPROVAL	DATE
Checked	2-25-65		5/16/67
CHECKED	DATE		
ELECT. DES.	DATE	MS4439	
MECH. DES.	DATE		
SHEET		REV. LTR.	

1	RSBA-1		
QTY/UNIT	MODEL USED ON	ASS'Y. NO.	
SCALE 1:1	CODE A		
THE CONTENTS OF THIS DRAWING ARE THE EXCLUSIVE PROPERTY OF THE TECHNICAL MATERIEL CORP. ITS UNAUTHORIZED USE OR REPRODUCTION IN WHOLE OR IN PART IS STRICTLY FORBIDDEN.			