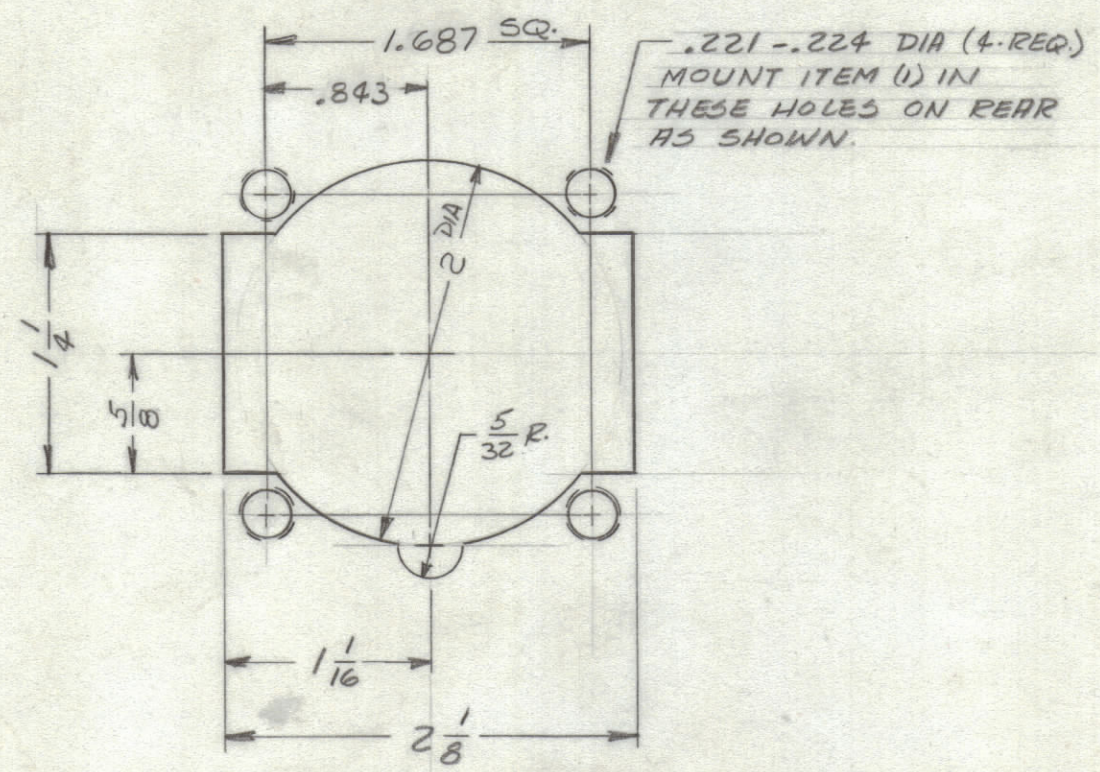
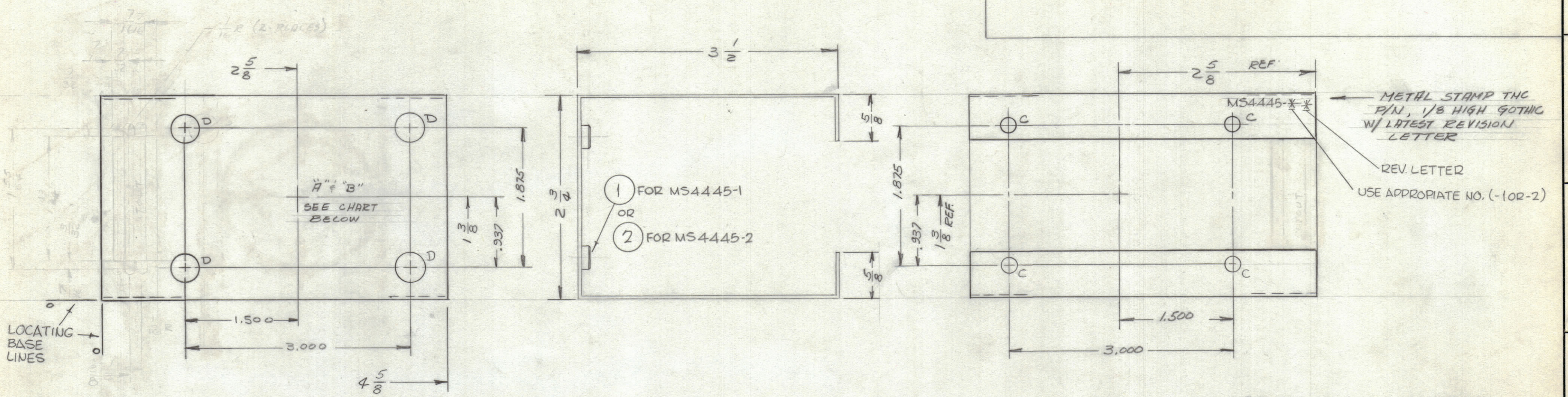
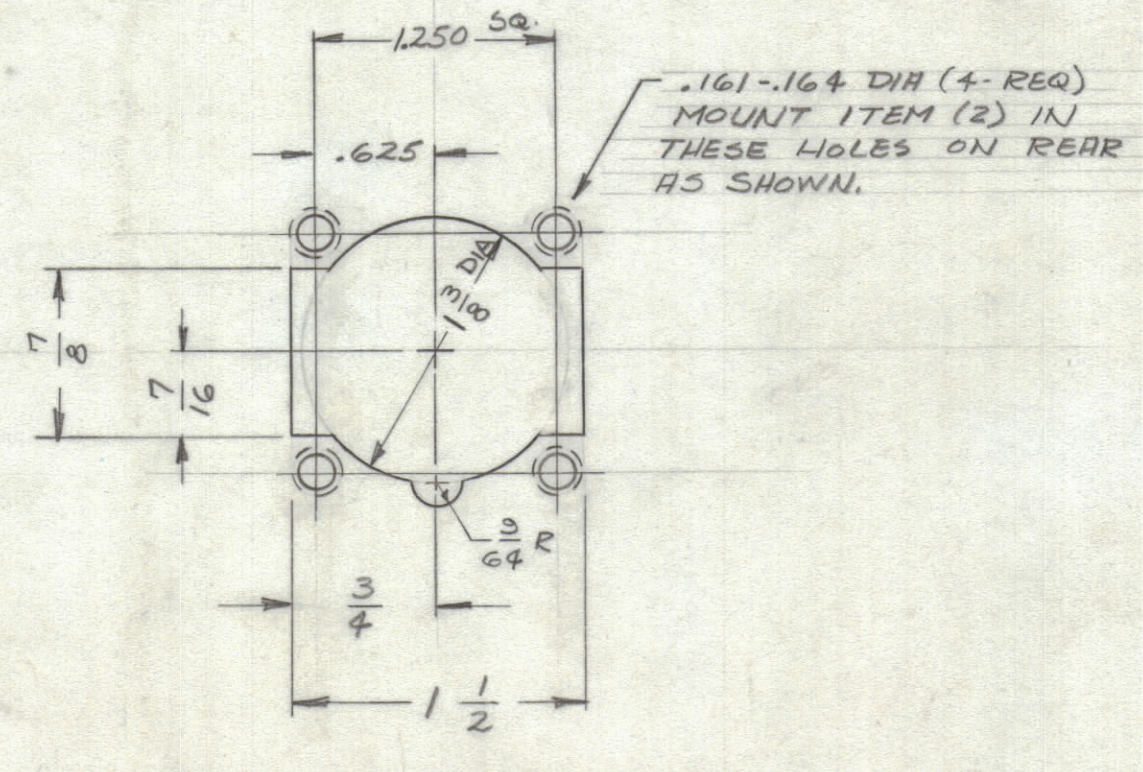


REVISIONS						
ZONE	SYM	DESCRIPTION	DATE	E.M.N. NO.	DRAFT	CHKD APPD
	X	EXDGR. RELEASE	2/16/65	X		
G7	X ₁	CONN. DETAIL DELETED.	4/7/65	X		J.M. W.J.
	Ø	ORIGINAL RELEASE FOR PRODUCTION	5/25/65	-M		



"A" DETAIL (1-REQ)
SEE CHART BELOW



"B" DETAIL (1-REQ)
SEE CHART BELOW

HOLE	DESCRIPTION	REQ.
A	SEE DETAIL	1
B	SEE DETAIL	1
C	3/16 DIA.	4
D	3/8 DIA.	4

- UNLESS OTHERWISE SPECIFIED:
1. USE MATERIAL THICKNESS FOR MAXIMUM RADIUS ON ALL BENDS
 2. ALL ANGULAR BENDS 90 DEGREES
 3. REMOVE ALL BURRS AND SHARP EDGES
 4. MOUNT INSERTS AFTER FINISHING

TMC PART NO.	DESCRIPTION	MARKING P/N	USED ON	REQ	ASSY NO.
MS4445 - 1	USE DETAIL "A"	LD1825	RSBA-1	1	A
MS4445 - 2	USE DETAIL "B"	LD1828	RCSA-1	1	A

REQ'D.	ITEM	PART NUMBER	DESCRIPTION	SYMBOL
4	2	NT129-440-4	NUT, PLAIN, SPLINE	DET "B"
4	1	NT129-832-4	NUT, PLAIN, SPLINE	DET. "A"

EATON LIST OF MATERIAL FORMALLY E3162B-1				
MATERIAL	THE TECHNICAL MATERIEL CORP. MAMARONECK, NEW YORK			
FINISH	TITLE			
.081, ALUMINUM 5052-H32	BRACKET, MTG, SWITCH, SOLENOID			
5404- YELLOW IRIDITE				
UNLESS OTHERWISE SPECIFIED DIMENSIONS ARE IN INCHES AND INCLUDE CHEMICALLY APPLIED OR PLATED FINISHES		DRAWN W. JORDAN	DATE 2-16-65	FINAL APPROVAL [Signature]
DECIMALS .X ± .05 .XX ± .01 .XXX ± .005		TOLERANCES		DATE 5/25/65
FRACTIONS ± 1/64 ANGLES ± 0° 30'		ELECT. DES. W. JORDAN		DATE 5/25/65
		MECH. DES. W. JORDAN		DATE 5/25/65
		SHEET		DATE 5/25/65

SEE CHART	SEE CHART	SEE CHART
Q'TY./UNIT	MODEL USED ON	ASSY. NO.
SCALE 1:1	CODE A	

NOTES

THE CONTENTS OF THIS DRAWING ARE THE EXCLUSIVE PROPERTY OF THE TECHNICAL MATERIEL CORP. ITS UNAUTHORIZED USE OR REPRODUCTION IN WHOLE OR IN PART IS STRICTLY FORBIDDEN.

MS4445
Ø