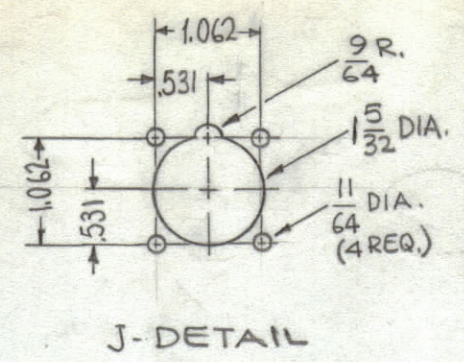
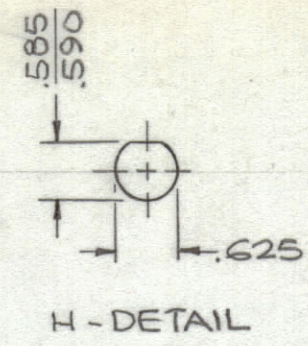
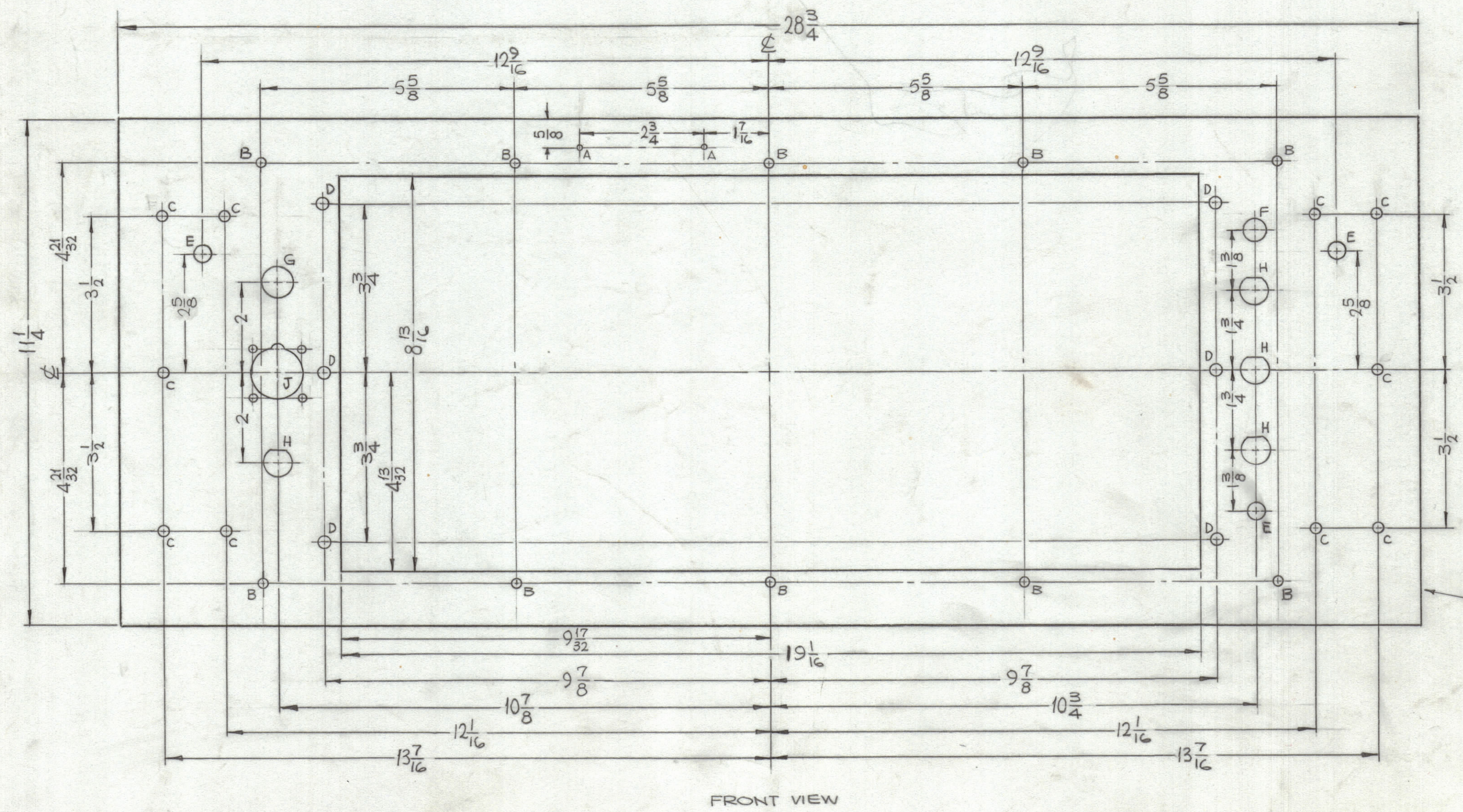


HOLES	DESCRIPTION	REQ.
A	.078 DIA.	2
B	3/16 DIA.	10
C	7/32 DIA.	10
D	1/4 DIA.	6
E	3/8 DIA.	3
F	1/2 DIA.	1
G	11/16 DIA.	1
H	SEE DETAIL	4
J	SEE DETAIL	1



REVISIONS						
ZONE	SYM	DESCRIPTION	DATE	E.M.N. NO.	DRAFT	CHKD
	X1	RET DES. WAS LD1648	3/18/65			
	X2	Ø B HOLE CHANGED TO E HOLE, ON A HOLES 1 3/16 DIM WAS 2 1/16, ON CUTOUT 19 1/16 DIM WAS 9 1/16 (ERROR)	4/6/65			
	Q	ORIGINAL RELEASE FOR PRODUCTION	8/25/66		RME	



METAL STAMP TMC PART NO. (MS 4455) 1/8 HIGH GOTHIC W/LATEST REV. LETTER. (ON REAR).

MS 4455

MACHINING:

- MILL ALL EDGES.
- HOLES MUST BE DRILLED, UNLESS OTHERWISE SPECIFIED.
- LATERAL BOW OF PANEL MUST BE KEPT TO .031 TOLERANCE.
- PANEL MUST BE FREE OF ALL MACHINING MARKS, GOUGES AND SCRATCHES. IF NECESSARY, SAND FRONT OF PANEL WITH NO. 120 GRIT SANDPAPER.

FINISH NOTES:

- S404 - IRIDITE 14-2 AL-COAT.
- S114 - ZINC CHROMATE PRIMER) FRONT AND
- S115 - SMOOTH GRAY ENAMEL) EDGES ONLY

NOTES

Q'TY/UNIT	MODEL USED ON	ASS'Y. NO.
1	AP126	
SCALE	CODE	
1/2:1	A	

THE CONTENTS OF THIS DRAWING ARE THE EXCLUSIVE PROPERTY OF THE TECHNICAL MATERIEL CORP. ITS UNAUTHORIZED USE OR REPRODUCTION IN WHOLE OR IN PART IS STRICTLY FORBIDDEN.

REQ'D.	ITEM	PART NUMBER	DESCRIPTION	SYMBOL
F. BUDETTI LIST OF MATERIAL				
MATERIAL		THE TECHNICAL MATERIEL CORP.		
3/16 THICK ALUMINUM 2024-T3		MAMARONECK, NEW YORK		
FINISH		TITLE		
SEE NOTE		PANEL, FRONT, DRIVER DRAWER		
UNLESS OTHERWISE SPECIFIED DIMENSIONS ARE IN INCHES AND INCLUDE CHEMICALLY APPLIED OR PLATED FINISHES	DRAWN	DATE	FINAL APPROVAL	DATE
	SRG	3-18-65		
DECIMALS .X ± .05 .XX ± .01 .XXX ± .005	CHECKED	DATE		
FRACTIONS ± 1/64 ANGLES ± 0° 30'	Hde	8/29/66		
	ELECT. DES.	DATE		
	MECH. DES.	DATE		
			MS 4455	