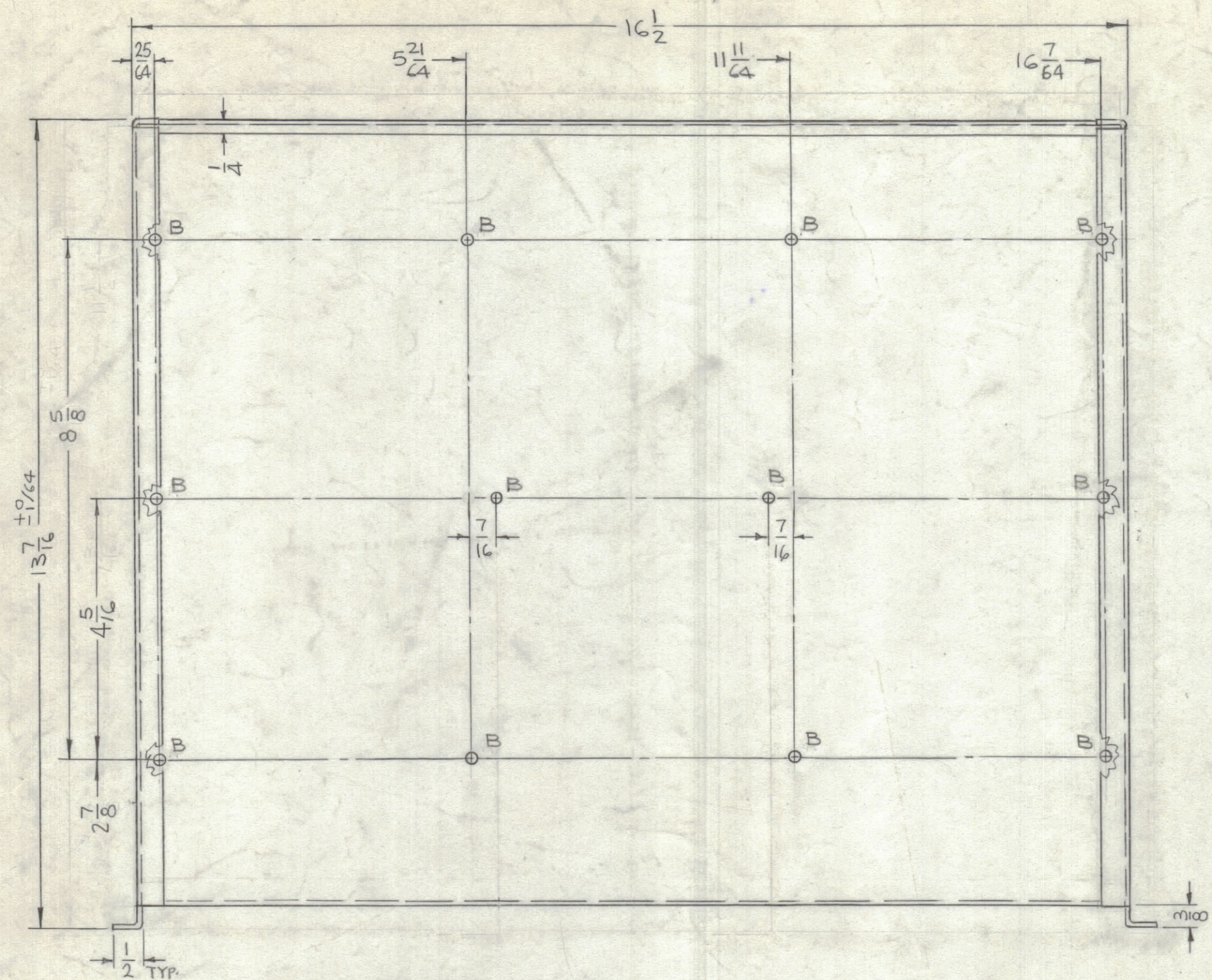
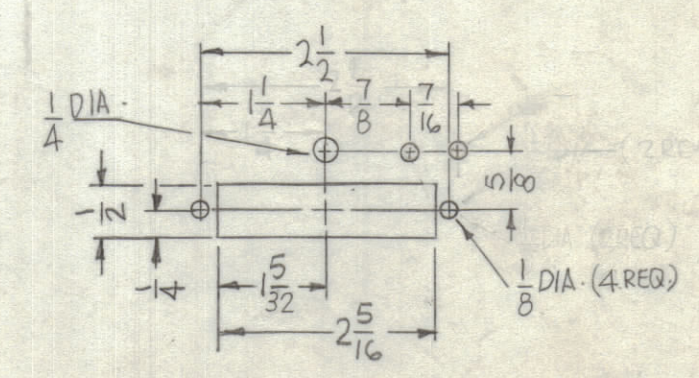


REVISIONS						
ZONE	SYM	DESCRIPTION	DATE	E.M.N. NO.	DRAFT	CHKD
	X	EXPERIMENTAL RELEASE	6-23-66	X	JML	
	X1	12 B & 2 D HOLES ADDED	6-30-66	X1	JML	
	X2	"A" HOLES WERE "E" HOLES - ON TOP VIEW "B" HOLES WERE "A" HOLES	8-9-66	X2	GDL	
	X3	3/8 DIM FOR "D" HOLES ADDED	9-8-66	X3	JML	
	X4	NO LONGER REQ. SEE NOTE	12-15-66	X4	JML	
	Ø	ORIGINAL RELEASE FOR PRODUCTION	1/11/67	Ø	CV	

THIS DRAWING REPLACED BY MS 6050-
 AS OF 12-15-66
 MSG051
 USED ONLY ON 10 EXISTING AMPLS

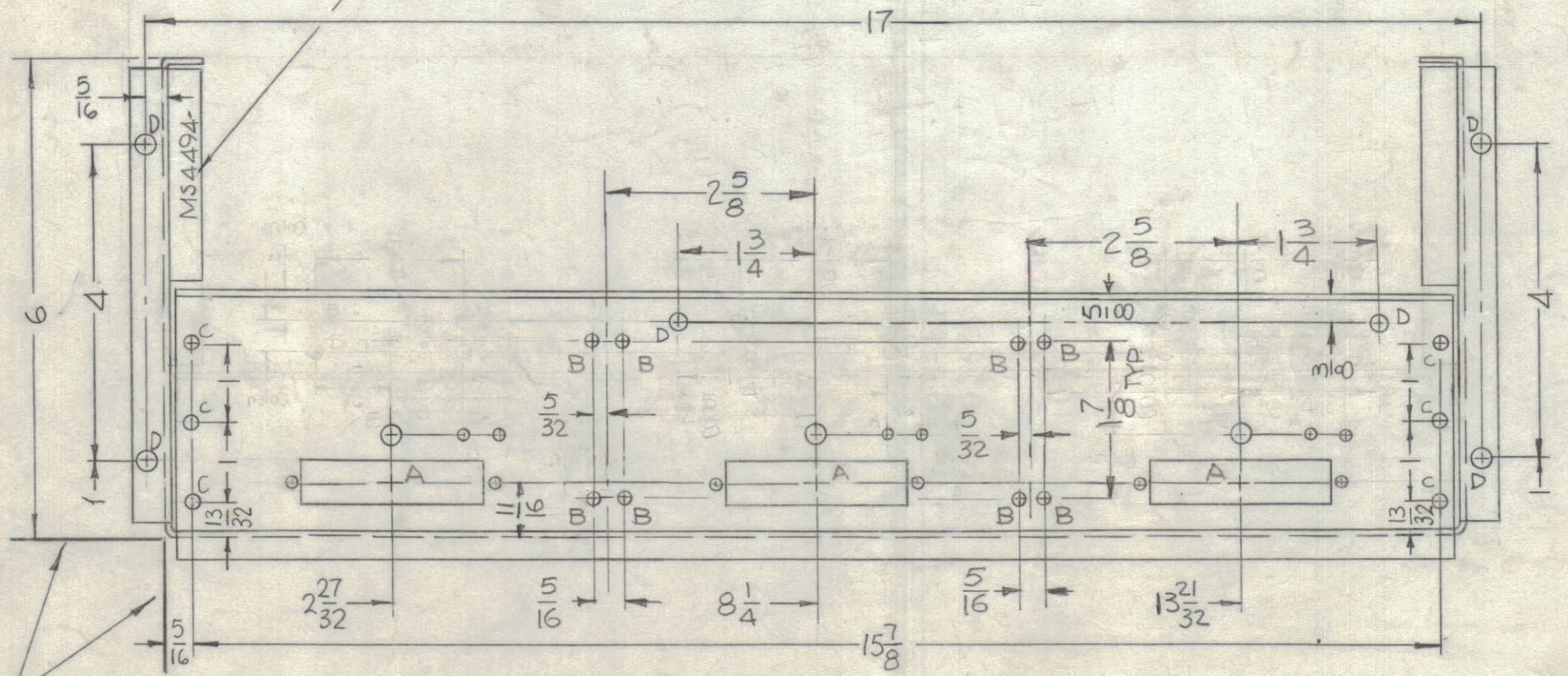


HOLES	DESCRIPTION	REQ
A	SEE DETAIL	3
B	9/64 DIA	20
C	11/64 DIA.	12
D	13/64 DIA.	6
E	DELETED	
F	SEE DETAIL	3



A - DETAIL
(3 REQ)

MARK TMC P/N
 1/8 HIGH GOTHIC
 W/LATEST REV
 LETTER.



LOCATING
 BASE
 LINES

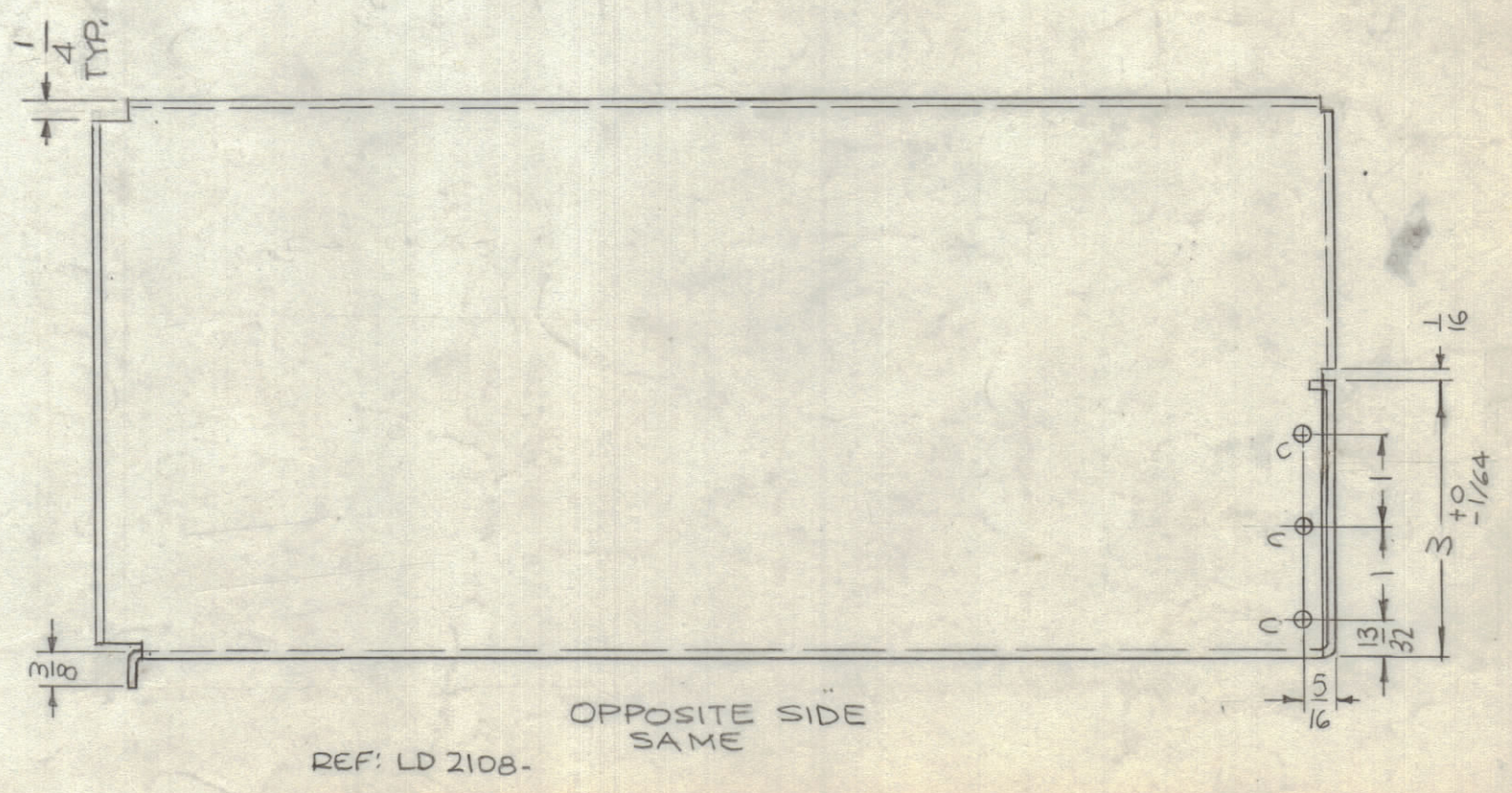
- UNLESS OTHERWISE SPECIFIED:
1. USE MATERIAL THICKNESS FOR MAXIMUM RADIUS ON ALL BENDS
 2. ALL ANGULAR BENDS 90 DEGREES
 3. REMOVE ALL BURRS AND SHARP EDGES

NOTES

QTY./UNIT	TCSA-1	AX632
SCALE	1:2	
MODEL USED ON		
CODE	A	
ASS'Y. NO.		

THE CONTENTS OF THIS DRAWING ARE THE EXCLUSIVE PROPERTY OF THE TECHNICAL MATERIEL CORP. ITS UNAUTHORIZED USE OR REPRODUCTION IN WHOLE OR IN PART IS STRICTLY FORBIDDEN.

REQ'D.	ITEM	PART NUMBER	DESCRIPTION	SYMBOL
F. BUDETTI LIST OF MATERIAL				
MATERIAL 064 THICK ALUMINUM 5052-H32			THE TECHNICAL MATERIEL CORP. MAMARONECK, NEW YORK	
FINISH S404 YEL. IRIDITE			TITLE CHASSIS, SERVO AMPL	
DRAWN	JML	DATE	6-23-66	FINAL APPROVAL
CHECKED	JCS	DATE	11-19-66	DATE
ELECT. DES.	JCS	DATE		MS4494
MECH. DES.	JML	DATE	1-11-67	REV. LTR.
TOLERANCES			SHEET	
DECIMALS	± 0.05			
.XX ± .01	± 0.005			
.XXX ± .005				
FRACTIONS	± 1/64			
ANGLES	± 0° 30'			



MS4494
 Ø