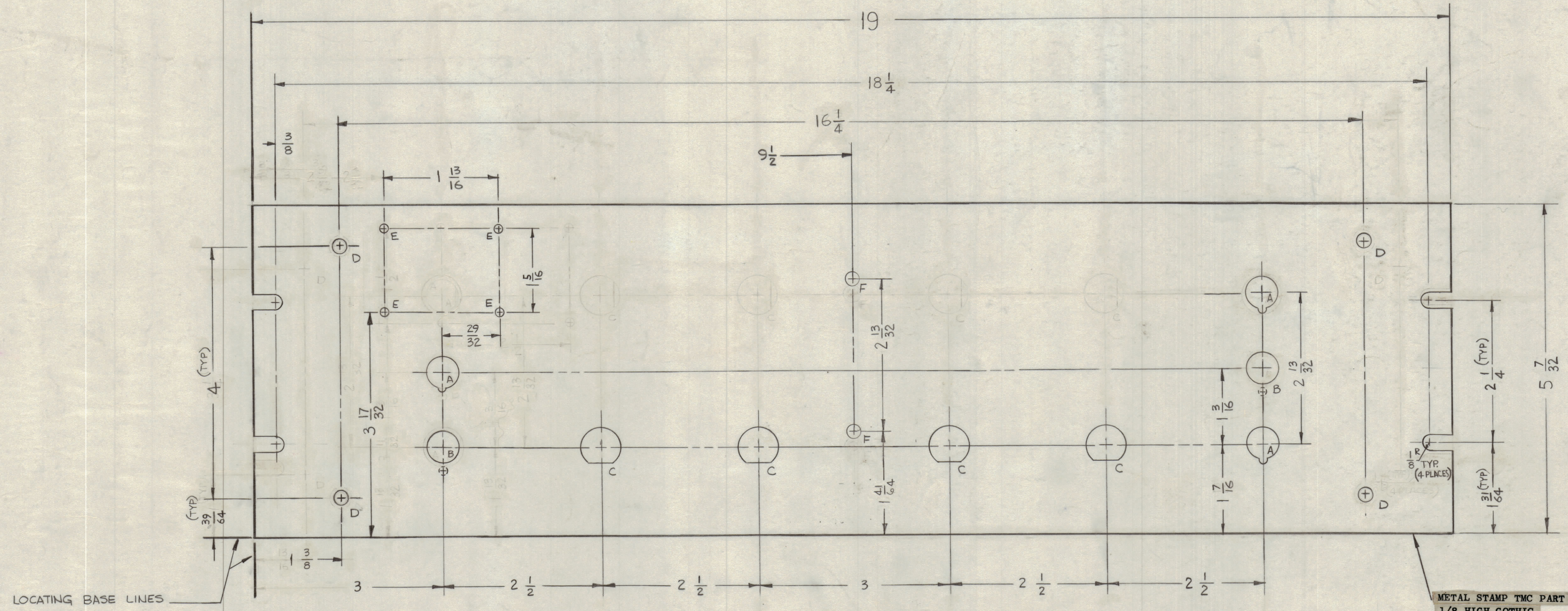
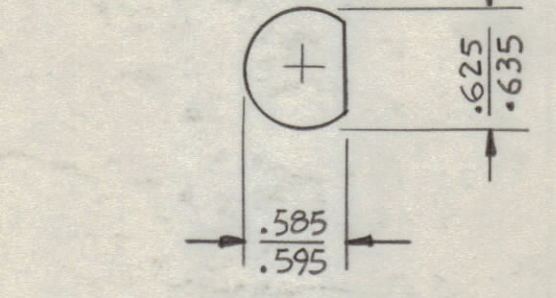


| REVISIONS | | | | | | | |
|-----------|-----|---|---------|------------|-------|------|------|
| ZONE | SYM | DESCRIPTION | DATE | E.M.N. NO. | DRAFT | CHKD | APPD |
| | X | EXP. RELEASE | 4-5-65 | 1 | | EW | AK |
| | X1 | DIM 11/16 WAS 17/16 1/32 DEEP ADDED TO DETAIL | 4-8-65 | 2 | | EW | AK |
| | X2 | 1 1/64 DIM. WAS 1 1/16 | 4/28/65 | 3 | | JL | AK |
| | Ø | ORIG. RELEASE FOR PRODUCTION | 9/30/65 | | | JL | |

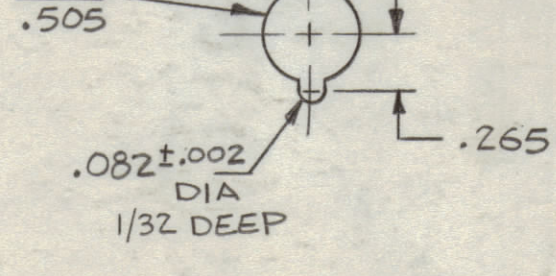
| HOLE | DESCRIPTION | REQ |
|------|-----------------------|-----|
| A | SEE DETAIL | 3 |
| B | SEE DETAIL | 2 |
| C | SEE DETAIL | 4 |
| D | 13/64 DIA. | 4 |
| E | .076 DIA. (#48 DRILL) | 4 |
| F | 11/64 DIA. | 2 |



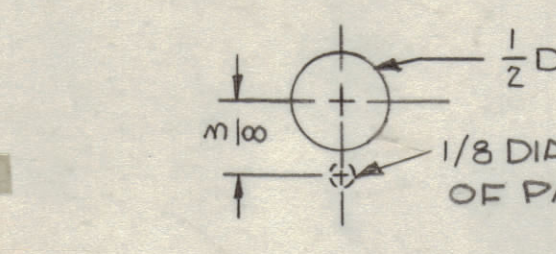
DETAIL-C



DETAIL-A



DETAIL B



FINISH NOTES:
 1. S404 - IRIDITE 14-2 AL-COAT.
 2. S114 - ZINC CHROMATE PRIMER FRONT AND
 3. S115 - SMOOTH GRAY ENAMEL EDGES ONLY
 OR AS PER CUSTOMER REQUIRED.

MACHINING:
 1. MILL ALL EDGES.
 2. HOLES MUST BE DRILLED, UNLESS OTHERWISE SPECIFIED.
 3. LATERAL BOW OF PANEL MUST BE KEPT TO .031 TOLERANCE.
 4. PANEL MUST BE FREE OF ALL MACHINING MARKS, GOUGES AND SCRATCHES. IF NECESSARY, SAND FRONT OF PANEL WITH NO. 120 GRIT SANDPAPER.

(REF) LD-1855

| REQ'D. | ITEM | PART NUMBER | DESCRIPTION | SYMBOL |
|---|------|-------------|------------------------------|--------|
| RE. EATON LIST OF MATERIAL | | | | |
| MATERIAL | | | THE TECHNICAL MATERIEL CORP. | |
| 3/16, ALUMINUM, 2024-T3 | | | MAMARONECK, NEW YORK | |
| FINISH | | | TITLE | |
| SEE FINISH NOTE | | | PANEL, FRONT | |
| UNLESS OTHERWISE SPECIFIED DIMENSIONS ARE IN INCHES AND INCLUDE CHEMICALLY APPLIED OR PLATED FINISHES | | | DRAWN R. UZZO DATE 3-26-64 | |
| DECIMALS .1 ± .05 .2 ± .01 .3 ± .005 | | | CHECKED GJB DATE 4/29/65 | |
| FRACTIONS ± 1/64 ANGLES ± 0° 30' | | | ELECT. DES. DATE | |
| TOLERANCES | | | MECH. DES. DATE | |
| | | | DATE | |
| | | | SHEET | |
| | | | REV. LTR. | |

NOTES

THE CONTENTS OF THIS DRAWING ARE THE EXCLUSIVE PROPERTY OF THE TECHNICAL MATERIEL CORP. ITS UNAUTHORIZED USE OR REPRODUCTION IN WHOLE OR IN PART IS STRICTLY FORBIDDEN.

MS 4496 Ø

MS 4496 Ø