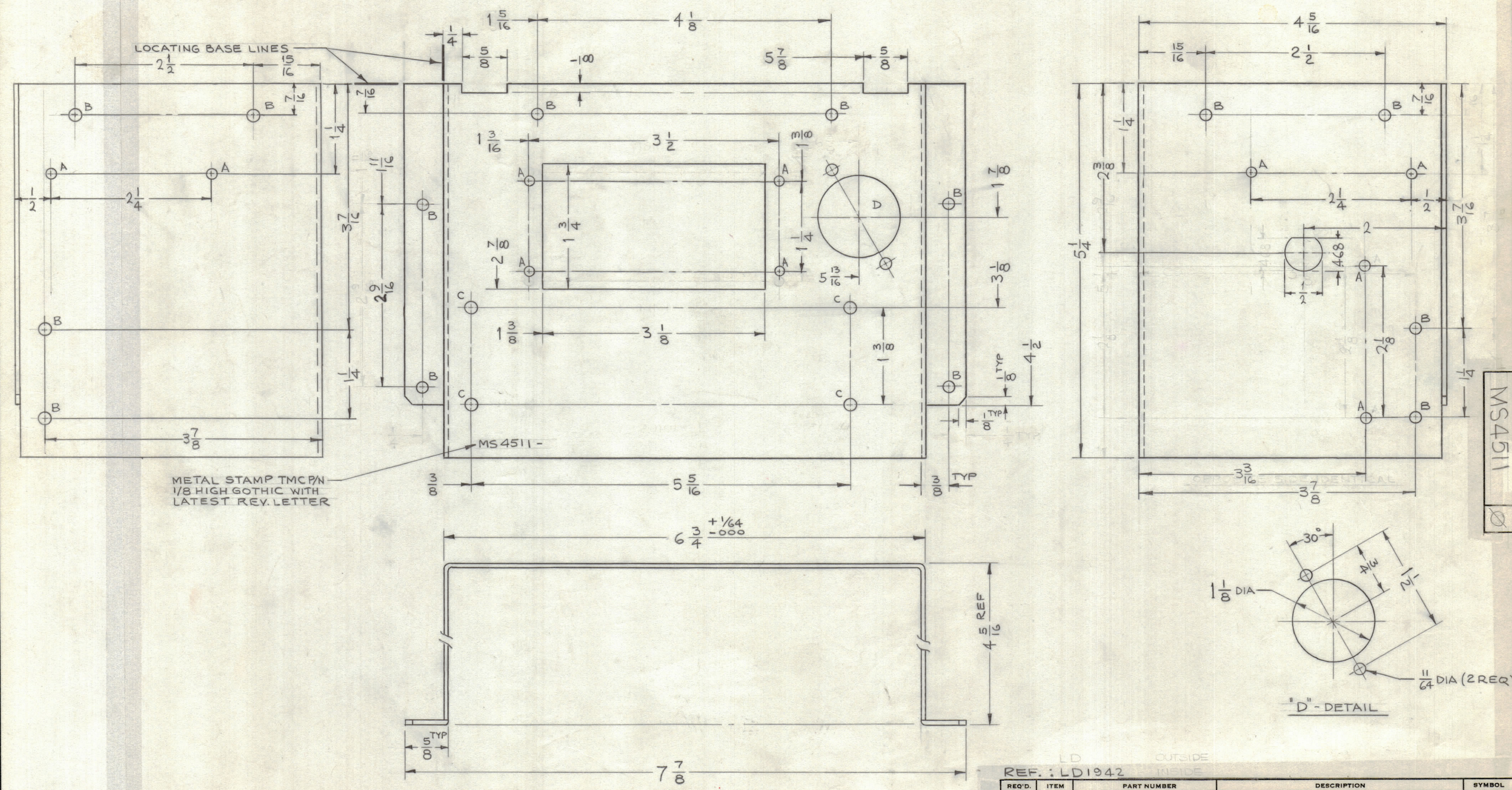


REVISIONS							
ZONE	SYM	DESCRIPTION	DATE	E.M.N. NO.	DRAFT	CHKD	APPD
2F,4F	X1	2 A HOLES ADDED, DIM 1-3/8 WAS 1-1/4, 1-1/4 WAS 1-1/2	4-22-65	X1	SRG	LD	
	X2	2 A HOLES ADDED ON RIGHT VIEW, LEFT SIDE VIEW ADDED	5-25-65	X2	SRG	DA	
	X3	FUSE HOLE ADDED	8-3-65	X3	SRG		
	Ø	ORIGINAL RELEASE FOR PRODUCTION	5-9-67	Ø	CV		

HOLE	DESCRIPTION	REQ
A	9/64 DIA	10
B	11/64 DIA	14
C	3/16 DIA	4
D	SEE DETAIL	1



UNLESS OTHERWISE SPECIFIED:
 1. USE MATERIAL THICKNESS FOR MAXIMUM RADIUS ON ALL BENDS
 2. ALL ANGULAR BENDS 90 DEGREES
 3. REMOVE ALL BURRS AND SHARP EDGES

NOTES

QTY/UNIT	MODEL USED ON	ASSY. NO.
1	TSTE 10K	
SCALE 1:1	CODE A	

REQ'D.	ITEM	PART NUMBER	DESCRIPTION	SYMBOL
REF: LD1942				
F. BUDETTI LIST OF MATERIAL				
MATERIAL			THE TECHNICAL MATERIEL CORP.	
.064 THICK ALUMINUM			MAMARONECK, NEW YORK	
6052-H32			TITLE	
FINISH			CHASSIS, MAIN	
S404 YEL. IRIDITE			DRAWN <i>lwb</i>	
UNLESS OTHERWISE SPECIFIED			DATE 4-13-65	
DIMENSIONS ARE IN INCHES AND INCLUDE			CHECKED	
CHEMICALLY APPLIED OR PLATED FINISHES			DATE	
DECIMALS			ELECT. DES. <i>LD</i>	
.X ± .05			DATE	
.XX ± .01			MECH. DES. <i>LD</i>	
.XXX ± .005			DATE	
TOLERANCES			SHEET	
FRACTIONS ± 1/64			MS4511	
ANGLES ± 0° 30'			REV. LTR.	

MS4511