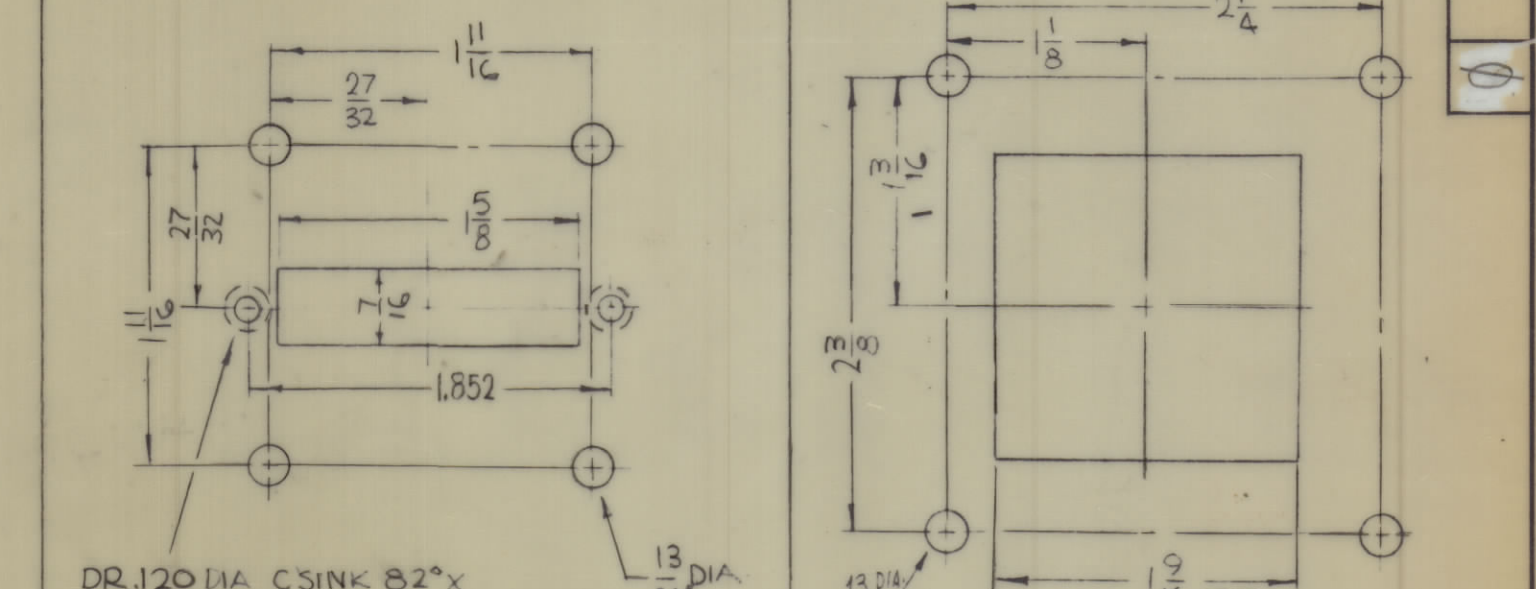
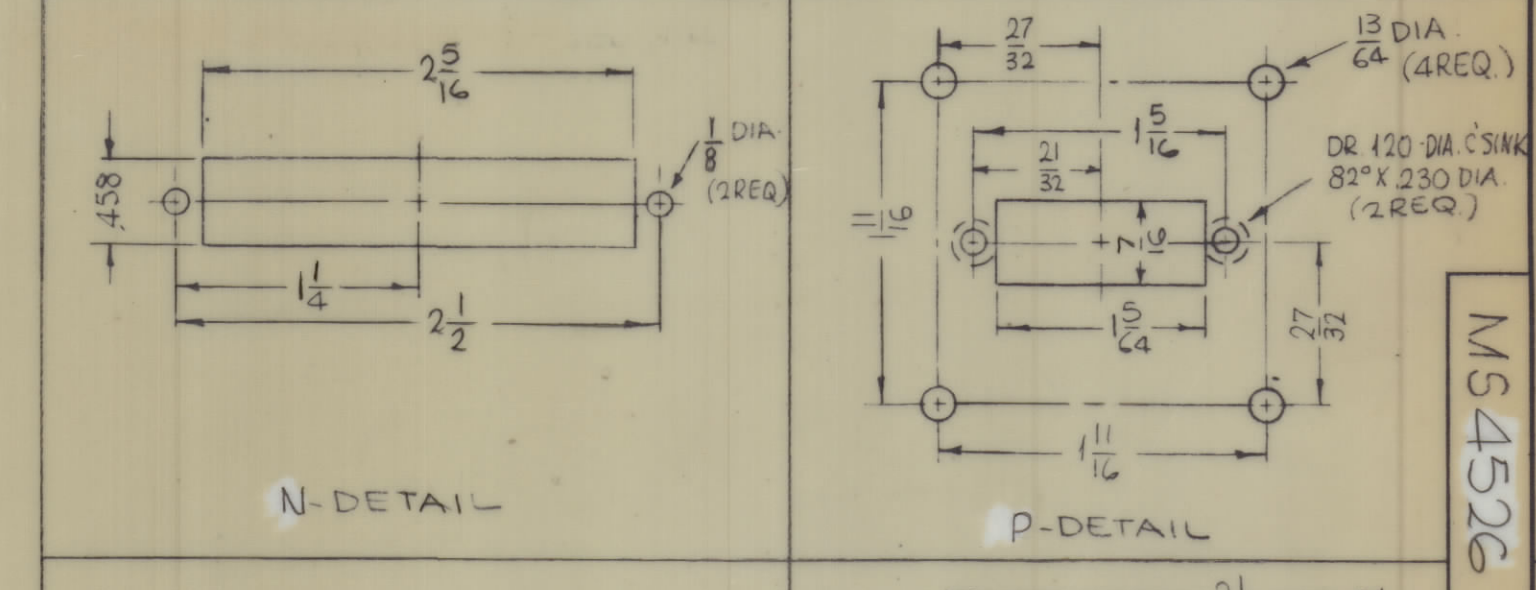
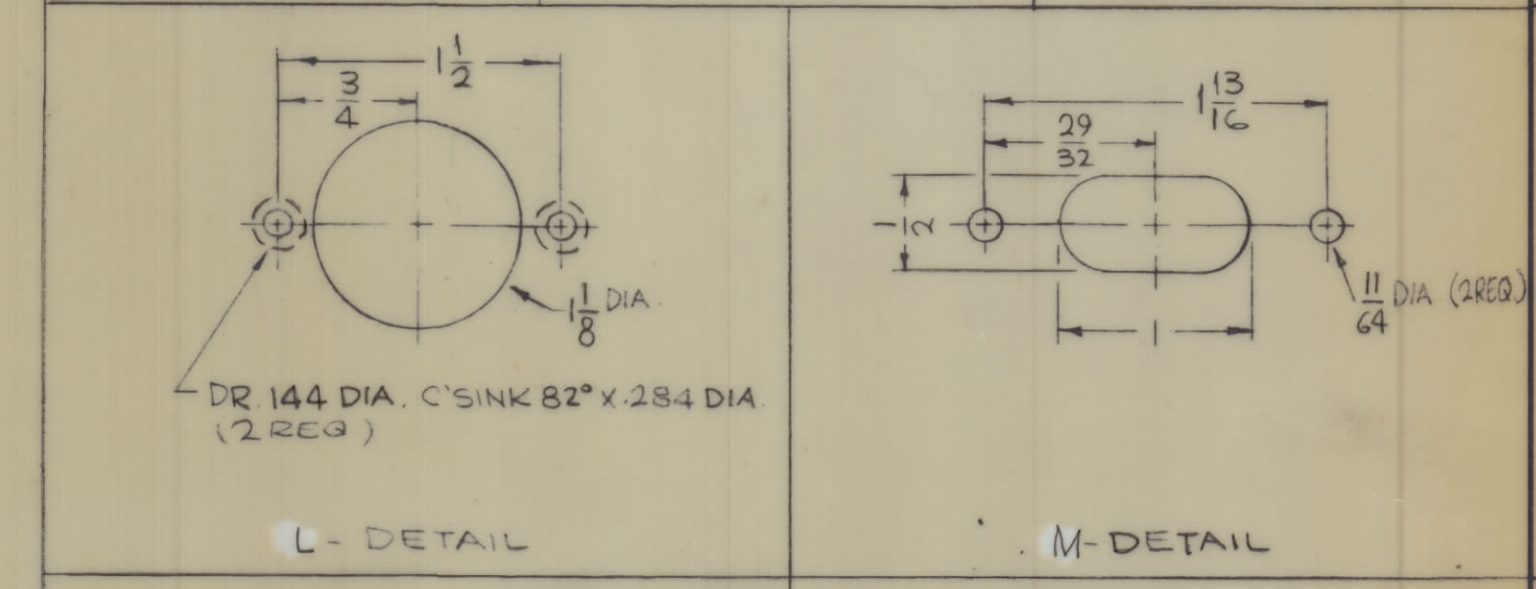
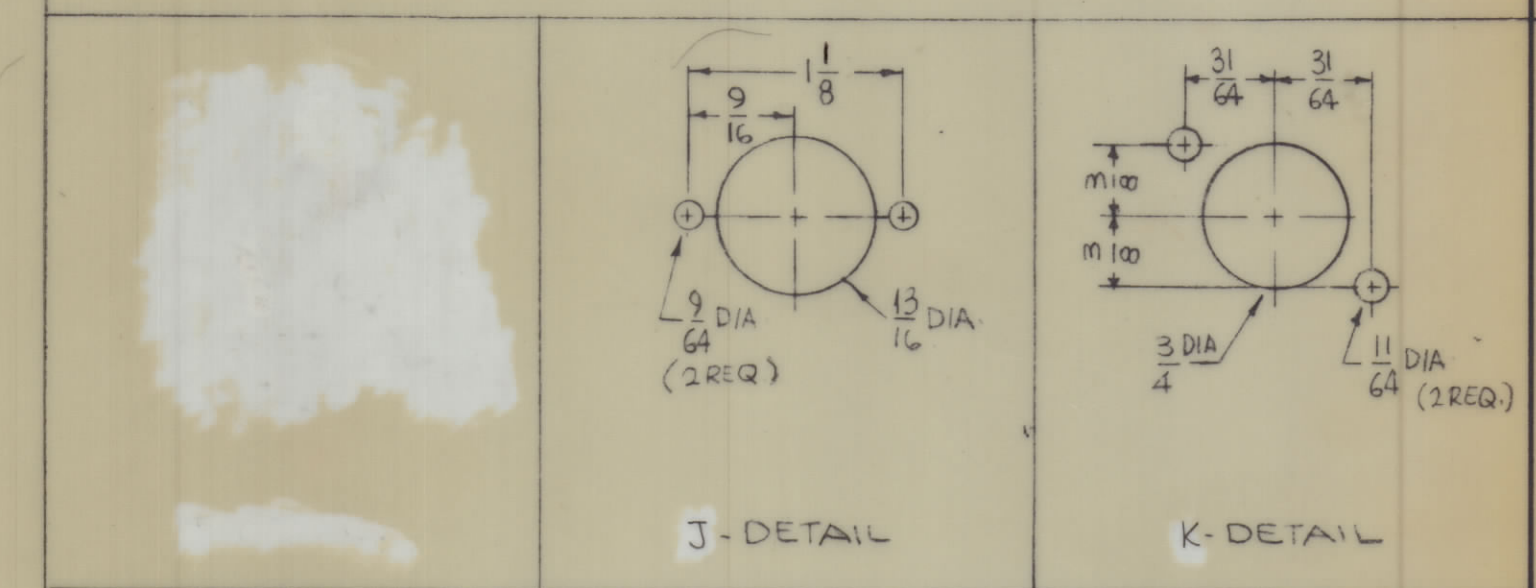
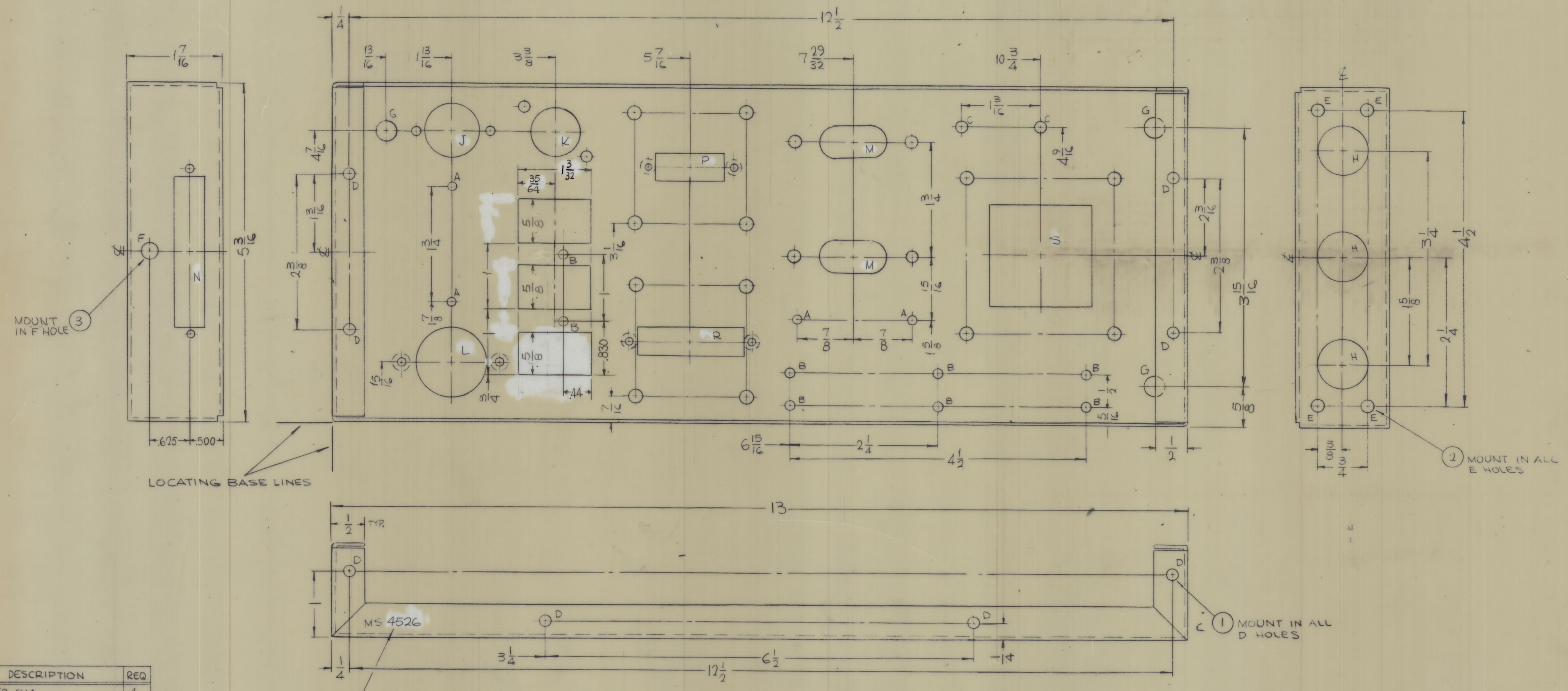


REVISIONS						
ZONE	SYM	DESCRIPTION	DATE	E.M.N. NO.	DRAFT	CHKD
X1		2 G HOLES ADDED, 2 B HOLES 44 DIM RE-LOCATED CUTOUTS WERE .656 X 1.094	5-12-65	X1	SRG	MS
		ORIGINAL RELEASE FOR PRODUCTION	9-24-68		RSB	JR



HOLES	DESCRIPTION	REQ
A	1/8 DIA.	4
B	9/64 DIA.	8
C	11/64 DIA.	2
D	.161-.164 DIA.	12
E	.191-.194 DIA.	4
F	.250-.253 DIA.	1
G	5/16 DIA.	3
H	3/4 DIA.	3
J	SEE DETAIL	1
K		1
L		1
M		1
N		1
P		1
R		1
S	SEE DETAIL	1

METAL STAMP TMC PART NO.
1/8 HIGH GOTHIC W/LATEST
REV. LETTER

OPPOSITE SIDE
SAME

- UNLESS OTHERWISE SPECIFIED:
- USE MATERIAL THICKNESS FOR MAXIMUM RADIUS ON ALL BENDS
 - ALL ANGULAR BENDS 90 DEGREES
 - REMOVE ALL BURRS AND SHARP EDGES
 - MOUNT INSERTS AFTER FINISHING
 - MOUNT ALL NT'S INSIDE OF CHASSIS

NOTES

QTY	UNIT	MODEL USED ON	ASBY NO.
1		TST ()10K	AZ-108
1		TST ()10K	AZ-106

REQ'D	ITEM	PART NUMBER	DESCRIPTION	SYMBOL
1	3	NT129-1032-4	NUT, PLAIN, SPLINE	F
4	2	NT129-632-4	NUT, PLAIN, SPLINE	E
12	1	NT129-440-4	NUT, PLAIN, SPLINE	D

F. BUDETTI		LIST OF MATERIAL	
MATERIAL	.064 THICK ALUMINUM	THE TECHNICAL MATERIEL CORP.	
FINISH	5052-H32	MAMARONECK, NEW YORK	
		TITLE	
		CHASSIS, SERVO MODULE	

SCALE	DATE	FINAL APPROVAL	DATE
1:1	4-21-65	SRG	9/12/68

DECIMALS	TOLERANCES	FRACTIONS	ANGLES
X ± .05	± 1/64	XX ± .01	± 0° 30'
.XXX ± .005			

MS4526

MS4526