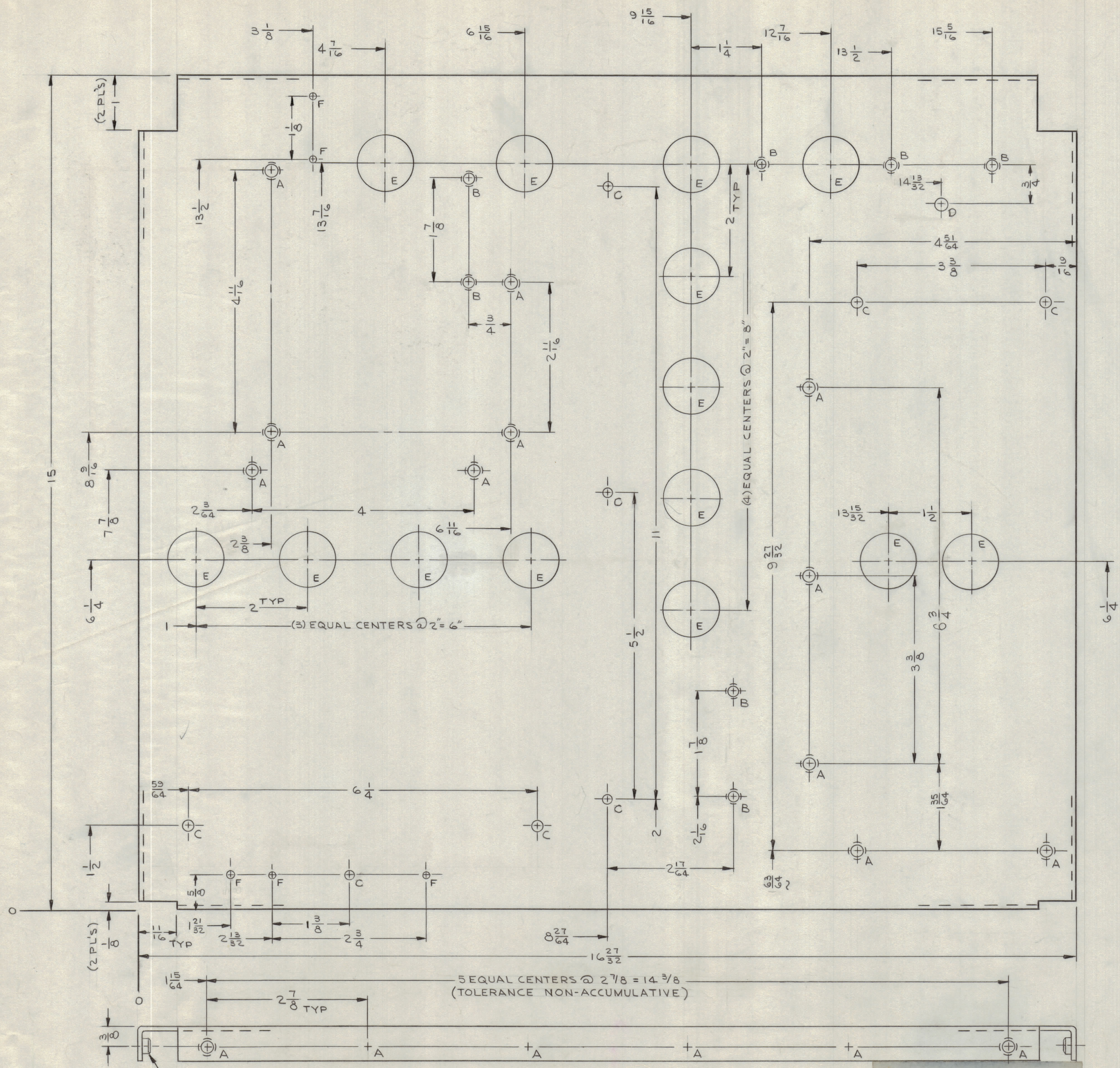


REVISIONS						
ZONE	SYM	DESCRIPTION	DATE	E.M.N. NO.	DRAFT	CHKD
97	φ	ORIG. RELEASE FOR PRODUCTION	4/23/64		JL	
B10	A	ADDED (1) "B" "F" HOLE; IT. 2 QTY WAS (6); "B" HOLES WERE (6); "F" HOLES WERE (4).	1/20/64	15590	JL	

HOLE LEGEND		
HOLE	DESCRIPTION	REQ'D
A	.221-.224 DIA	25
B	.191-.194 DIA	7
C	13/64 DIA	8
D	1/4 DIA	1
E	1.000 DIA	14
F	3/64 DIA	5



(OPPOSITE SIDE IDENTICAL)

METAL STAMP TMC PART NO. 1/8
HIGH GOTHIC W/LATEST REV. LETTER

2 MOUNT IN ALL "B" HOLES

5 EQUAL CENTERS @ 2 7/8 = 14 3/8
(TOLERANCE NON-ACCUMULATIVE)

ITEM-1 TO BE PLACED ON THIS SIDE ONLY

- UNLESS OTHERWISE SPECIFIED:
- USE MATERIAL THICKNESS FOR MAXIMUM RADIUS ON ALL BENDS
 - ALL ANGULAR BENDS 90 DEGREES
 - REMOVE ALL BURRS AND SHARP EDGES
 - MOUNT INSERTS AFTER FINISHING

NOTES

REF.: LD1882

QTY/UNIT	MODEL USED ON	ASS'Y. NO.
1	LRCB-1	
1	LRCB-1	

REQ'D.	ITEM	PART NUMBER	DESCRIPTION	SYMBOL
7	2	NT129-632-4	NUT, ROUND, SWAGE TYPE	B
25	1	NT129-832-4	NUT, ROUND, SWAGE TYPE	A

F. E. EATON		LIST OF MATERIAL	
MATERIAL	.081THK ALUMINUM 5052-H32	THE TECHNICAL MATERIEL CORP. MAMARONECK, NEW YORK	
FINISH	YELLOW IRIDITE PER S404	TITLE CHASSIS, ELECTRICAL, MAIN	
SCALE	1/1	DRAWN	J. LESHINSKI
DATE	4/21/64	CHECKED	JOB
DATE	4/21/64	DATE	4/21/64
DATE	4/21/64	DATE	4/21/64
DATE	4/21/64	DATE	4/21/64

MS4527 A

MS4527 A

REPROVAL NO. 4408