

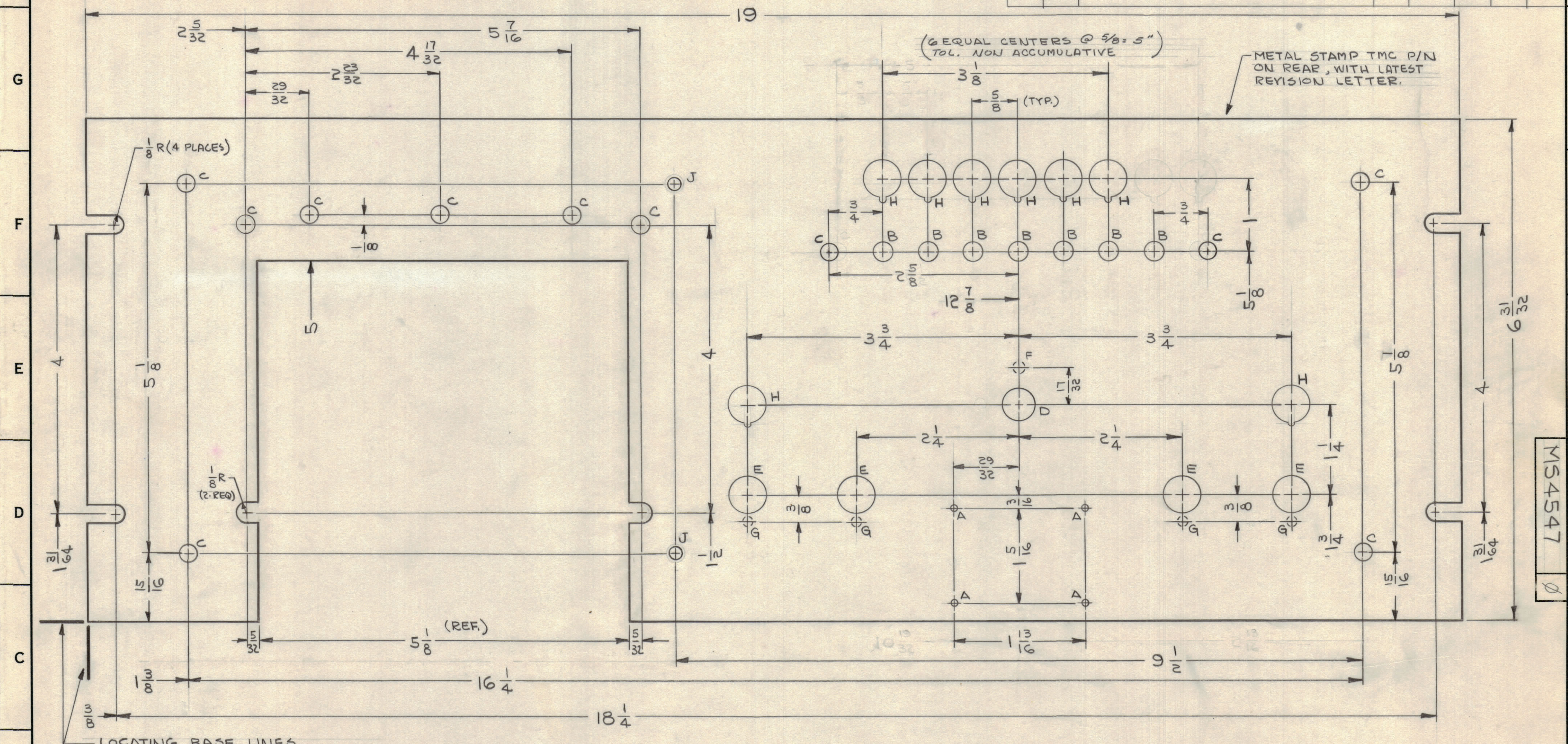
MACHINING:

- MILL ALL EDGES.
- HOLES MUST BE DRILLED, UNLESS OTHERWISE SPECIFIED.
- LATERAL BOW OF PANEL MUST BE KEPT TO .031 TOLERANCE.
- PANEL MUST BE FREE OF ALL MACHINING MARKS, GOUGES AND SCRATCHES. IF NECESSARY, SAND FRONT OF PANEL WITH NO. 120 GRIT SANDPAPER.

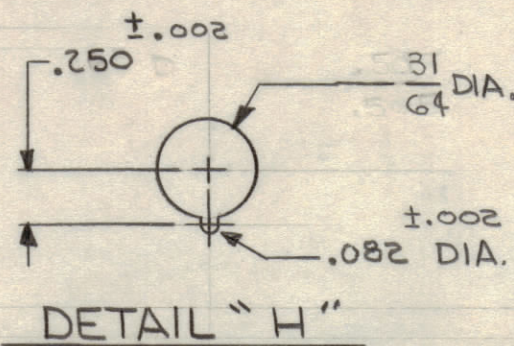
FINISH NOTES:

- S404 - IRIDITE 14-2 AL-COAT.
- S114 - ZINC CHROMATE PRIMER FRONT AND
- S115 - SMOOTH GRAY ENAMEL EDGES ONLY

REVISIONS						
ZONE	SYM	DESCRIPTION	DATE	E.M.N. NO.	DRAFT	CHKD
	X1	"B" HOLE QUAN. WAS 5 PER (ERROR)	6-22-65		JC	JM
		ORIGINAL RELEASE FOR PRODUCTION	7-22-65		AVC	



HOLE	DESCRIPTION	REQ.
A	.076 DIA.	4
B	1/4 DIA.	7
C	15/64 DIA.	11
D	7/16 DIA.	1
E	1/2 DIA.	4
F	5/32 DIA x 3/32 DP, ON REAR	1
G	1/8 DIA x 3/32 DP, ON REAR	4
H	SEE DETAIL	8
J	11/64 DIA	2



REF: LD 1876

REQ'D.	ITEM	PART NUMBER	DESCRIPTION	SYMBOL
F. EATON LIST OF MATERIAL E3179-D				
MATERIAL		3/16 ALUMINUM 2024-T3		
FINISH		SEE NOTES		
TITLE		PANEL, FRONT		
UNLESS OTHERWISE SPECIFIED DIMENSIONS ARE IN INCHES AND INCLUDE CHEMICALLY APPLIED OR PLATED FINISHES	DRAWN	DATE	FINAL APPROVAL	DATE
DECIMALS .X ± .05	Checked	7-22-65	AVC	7-22-65
FRACTIONS XX ± .01	DATE			
ANGLES XXX ± .005	MECH. DES.	DATE		
TOLERANCES ± 1/64 ANGLES ± 9° 30'	DATE	7/22/65		
THE CONTENTS OF THIS DRAWING ARE THE EXCLUSIVE PROPERTY OF THE TECHNICAL MATERIEL CORP. ITS UNAUTHORIZED USE OR REPRODUCTION IN WHOLE OR IN PART IS STRICTLY FORBIDDEN.		MS4547		

NOTES