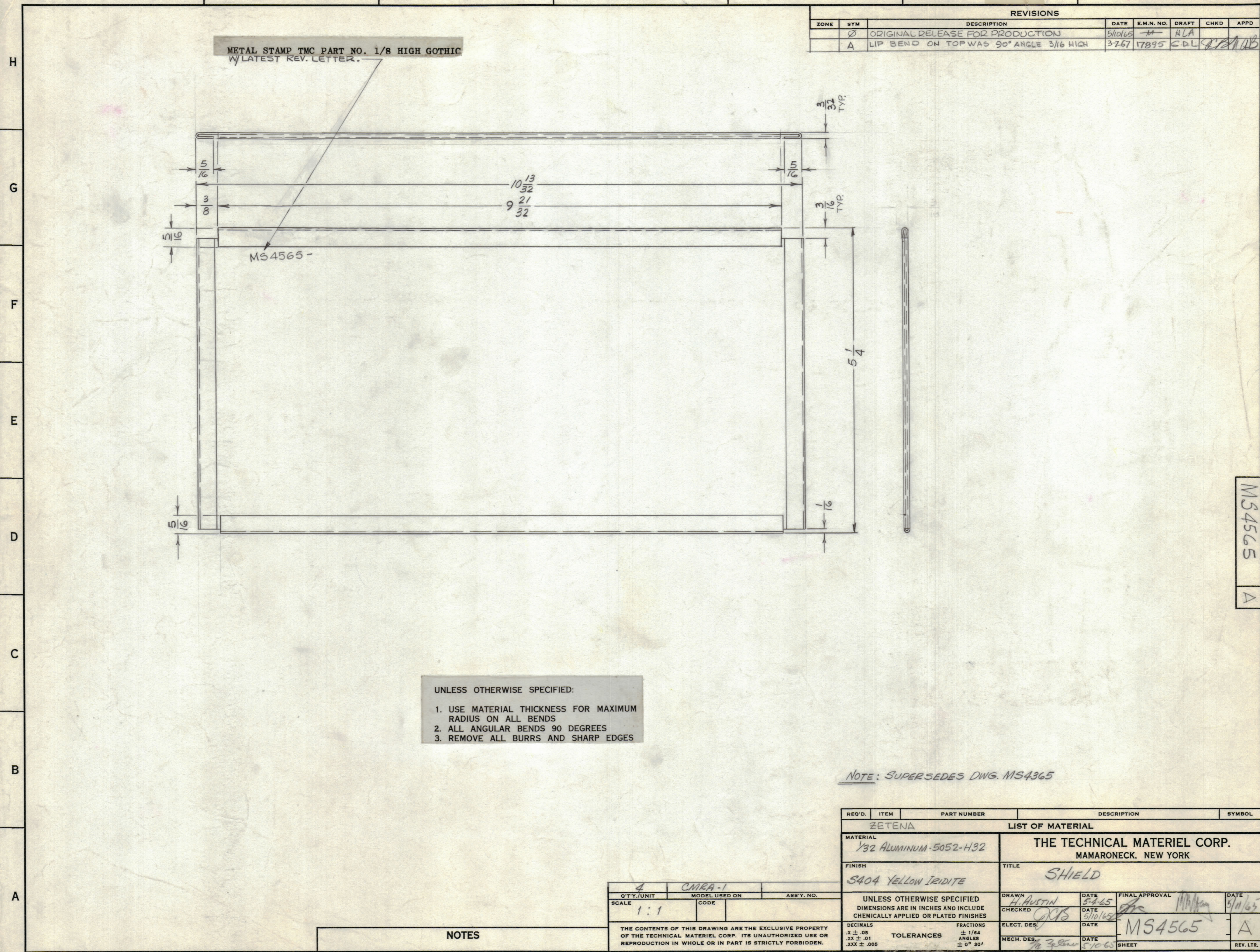


REVISIONS							
ZONE	SYM	DESCRIPTION	DATE	E.M.N. NO.	DRAFT	CHKD	APPD
	Ø	ORIGINAL RELEASE FOR PRODUCTION	5/10/65	-	ALA		
	A	LIP BEND ON TOP WAS 90° ANGLE 3/16 HIGH	3-7-67	17895	CDL		



METAL STAMP TMC PART NO. 1/8 HIGH GOTHIC
W/ LATEST REV. LETTER.

MS4565 -

- UNLESS OTHERWISE SPECIFIED:
1. USE MATERIAL THICKNESS FOR MAXIMUM RADIUS ON ALL BENDS
 2. ALL ANGULAR BENDS 90 DEGREES
 3. REMOVE ALL BURRS AND SHARP EDGES

NOTE: SUPERSEDES DWG. MS4365

REQ'D.	ITEM	PART NUMBER	DESCRIPTION	SYMBOL
ZETENA LIST OF MATERIAL				
MATERIAL		THE TECHNICAL MATERIEL CORP.		
Y32 ALUMINUM-5052-H32		MAMARONECK, NEW YORK		
FINISH		TITLE		
S404 YELLOW IRIDITE		SHIELD		
Q'TY./UNIT		MODEL USED ON	ASS'Y. NO.	
SCALE 1:1		CODE		
THE CONTENTS OF THIS DRAWING ARE THE EXCLUSIVE PROPERTY OF THE TECHNICAL MATERIEL CORP. ITS UNAUTHORIZED USE OR REPRODUCTION IN WHOLE OR IN PART IS STRICTLY FORBIDDEN.		UNLESS OTHERWISE SPECIFIED DIMENSIONS ARE IN INCHES AND INCLUDE CHEMICALLY APPLIED OR PLATED FINISHES		
DECIMALS	FRACTIONS	TOLERANCES		
.X ± .05	± 1/64	ANGLES		
.XX ± .01	ANGLES	± 0° 30'		
.XXX ± .005				
DRAWN	DATE	FINAL APPROVAL	DATE	
H. Austin	5-4-65	[Signature]	5/10/65	
CHECKED	DATE			
[Signature]	5/10/65			
ELECT. DES.	DATE	MS4565		A
MECH. DES.	DATE	SHEET		REV. LTR.
[Signature]	5-10-65			

NOTES

MS4565 A