

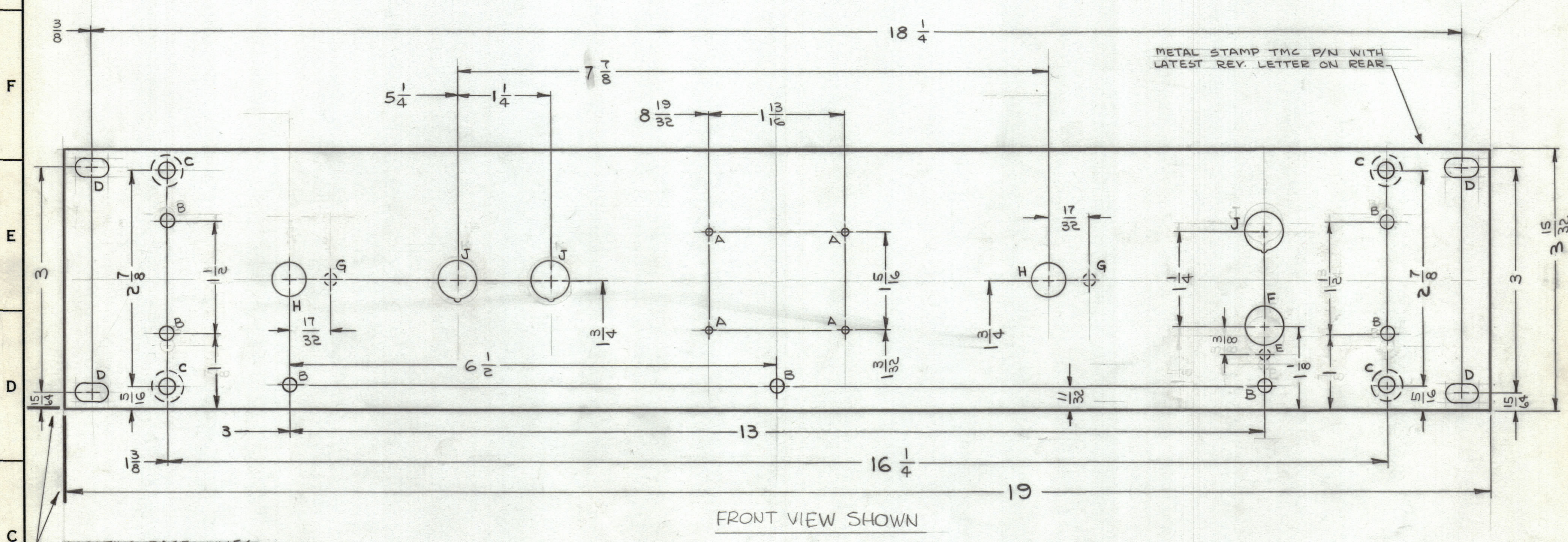
MACHINING:

- MILL ALL EDGES.
- HOLES MUST BE DRILLED, UNLESS OTHERWISE SPECIFIED.
- LATERAL BOW OF PANEL MUST BE KEPT TO .031 TOLERANCE.
- PANEL MUST BE FREE OF ALL MACHINING MARKS, GOUGES AND SCRATCHES. IF NECESSARY, SAND FRONT OF PANEL WITH NO. 120 GRIT SANDPAPER.

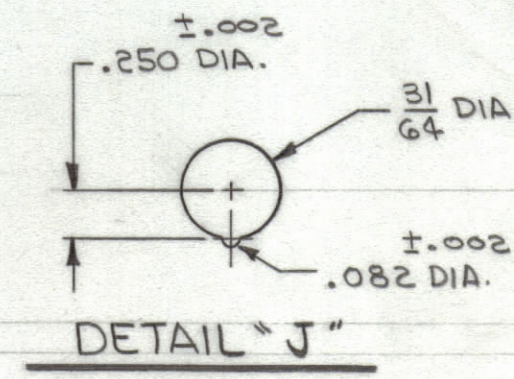
FINISH NOTES:

- S404 - IRIDITE 14-2 AL-COAT.
- S114 - ZINC CHROMATE PRIMER) FRONT AND
- S115 - SMOOTH GRAY ENAMEL) EDGES ONLY

REVISIONS						
ZONE	SYM	DESCRIPTION	DATE	E.M.N. NO.	DRAFT	CHKD
	Ø	ORIGINAL RELEASE FOR PRODUCTION	5/18/65			



HOLE	DESCRIPTION	REQ.
A	#4802 (.076) DIA.	4
B	11/64 DIA.	7
C	.196 DIA HOLE, C'SINK 82° TO .390 DIA, ON REAR	4
D	1/4 x 29/64 SLOT	4
E	1/8 DIA x 3/32 DP. ON REAR	1
F	1/2 DIA.	1
G	5/32 DIA x 3/32 DP. ON REAR	2
H	7/16 DIA	2
J	SEE DETAIL	3



REF: LD1892

REQ'D.	ITEM	PART NUMBER	DESCRIPTION	SYMBOL
F. EATON LIST OF MATERIAL				
MATERIAL		3/16, ALUMINUM 2024-T3	THE TECHNICAL MATERIEL CORP. MAMARONECK, NEW YORK	
FINISH		SEE NOTES	TITLE PANEL, FRONT	
UNLESS OTHERWISE SPECIFIED DIMENSIONS ARE IN INCHES AND INCLUDE CHEMICALLY APPLIED OR PLATED FINISHES		DRAWN G. Jensen	DATE 5-5-65	FINAL APPROVAL J.E. Eaton
SCALE 1:1		CODE A	DATE 5/18/65	DATE 5/18/65
DECIMALS .X ± .05		FRACTIONS ± 1/64		MS4573
XX ± .01		ANGLES ± 0° 30'		
XXX ± .005		TOLERANCES		REV. LTR. Ø

THE CONTENTS OF THIS DRAWING ARE THE EXCLUSIVE PROPERTY OF THE TECHNICAL MATERIEL CORP. ITS UNAUTHORIZED USE OR REPRODUCTION IN WHOLE OR IN PART IS STRICTLY FORBIDDEN.

NOTES

MS4573 Ø