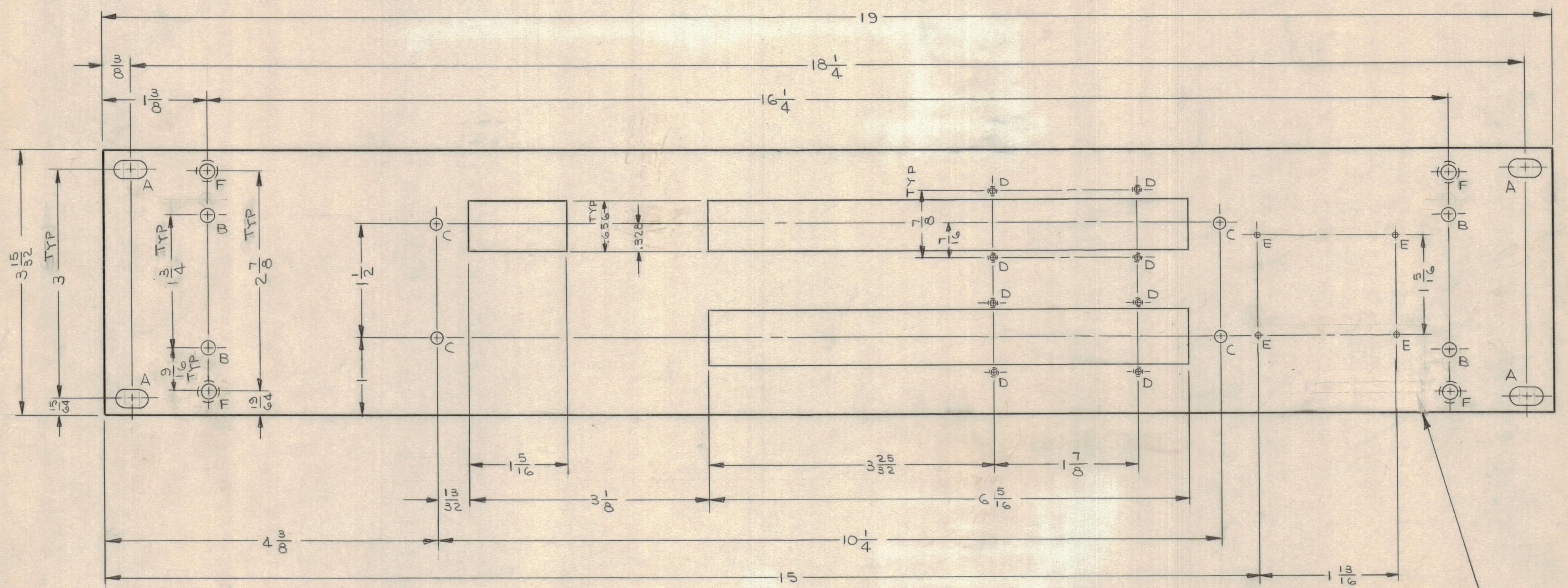


REVISIONS							
ZONE	SYM	DESCRIPTION	DATE	E.M.N. NO.	DRAFT	CHKD	APPD
	X1	"C" HOLES WERE 11/64 DIA.	7-8-65	-M	JC		W.J.
	Ø	ORIGINAL RELEASE	8-20-65		GDL		



MS459710

METAL STAMP TMC PART NO. 1/8 HIGH GOTHIC ON REAR OF PANEL W/LATEST REV. LETTER

FRONT OF PANEL SHOWN

HOLE LEGEND		
HOLE	DESCRIPTION	REQ'D
A	SEE DETAIL	4
B	13/64 DIA	4
C	15/64 DIA	4
D	NO. 50 (.0700) DR & TAP #2-52 NC2	8
E	NO. 48 (.0760) DRILL	4
F	.196 DIA THRU & C'SINK 82° X .390 DIA ON REAR OF PANEL	4

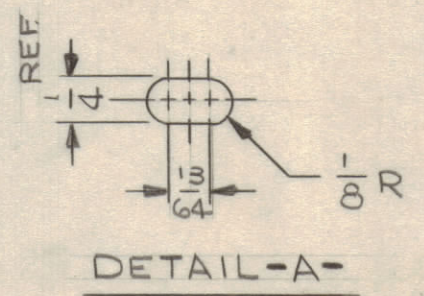
MACHINING:

- MILL ALL EDGES.
- HOLES MUST BE DRILLED, UNLESS OTHERWISE SPECIFIED.
- LATERAL BOW OF PANEL MUST BE KEPT TO .031 TOLERANCE.
- PANEL MUST BE FREE OF ALL MACHINING MARKS, GOUGES AND SCRATCHES. IF NECESSARY, SAND FRONT OF PANEL WITH NO. 120 GRIT SANDPAPER.

FINISH NOTES:

- S404 - IRIDITE 14-2 AL-COAT.
- S114 - ZINC CHROMATE PRIMER FRONT AND
- S115 - SMOOTH GRAY ENAMEL EDGES ONLY

OR PRIME & FINISH TO CUSTOMER SPEC.



REF.: LD1907

REQ'D.	ITEM	PART NUMBER	DESCRIPTION	SYMBOL
LIST OF MATERIAL				
MATERIAL 3/16 THK ALUMINUM 2024-T3			THE TECHNICAL MATERIEL CORP. MAMARONECK, NEW YORK	
FINISH SEE NOTES			TITLE PANEL, FRONT	
UNLESS OTHERWISE SPECIFIED DIMENSIONS ARE IN INCHES AND INCLUDE CHEMICALLY APPLIED OR PLATED FINISHES		DRAWN J. LESHINSKI	DATE 3/23/65	FINAL APPROVAL [Signature]
DECIMALS .X ± .05 .XX ± .01 .XXX ± .005		CHECKED [Signature]	DATE 8/18/65	DATE 8/20/65
FRACTIONS ± 1/64 ANGLES ± 0° 30'		ELECT. DES. W. JORDAN	DATE 8/20/65	DATE 8/20/65
TOLERANCES		MS459710		
THE CONTENTS OF THIS DRAWING ARE THE EXCLUSIVE PROPERTY OF THE TECHNICAL MATERIEL CORP. ITS UNAUTHORIZED USE OR REPRODUCTION IN WHOLE OR IN PART IS STRICTLY FORBIDDEN.		SHEET		

NOTES