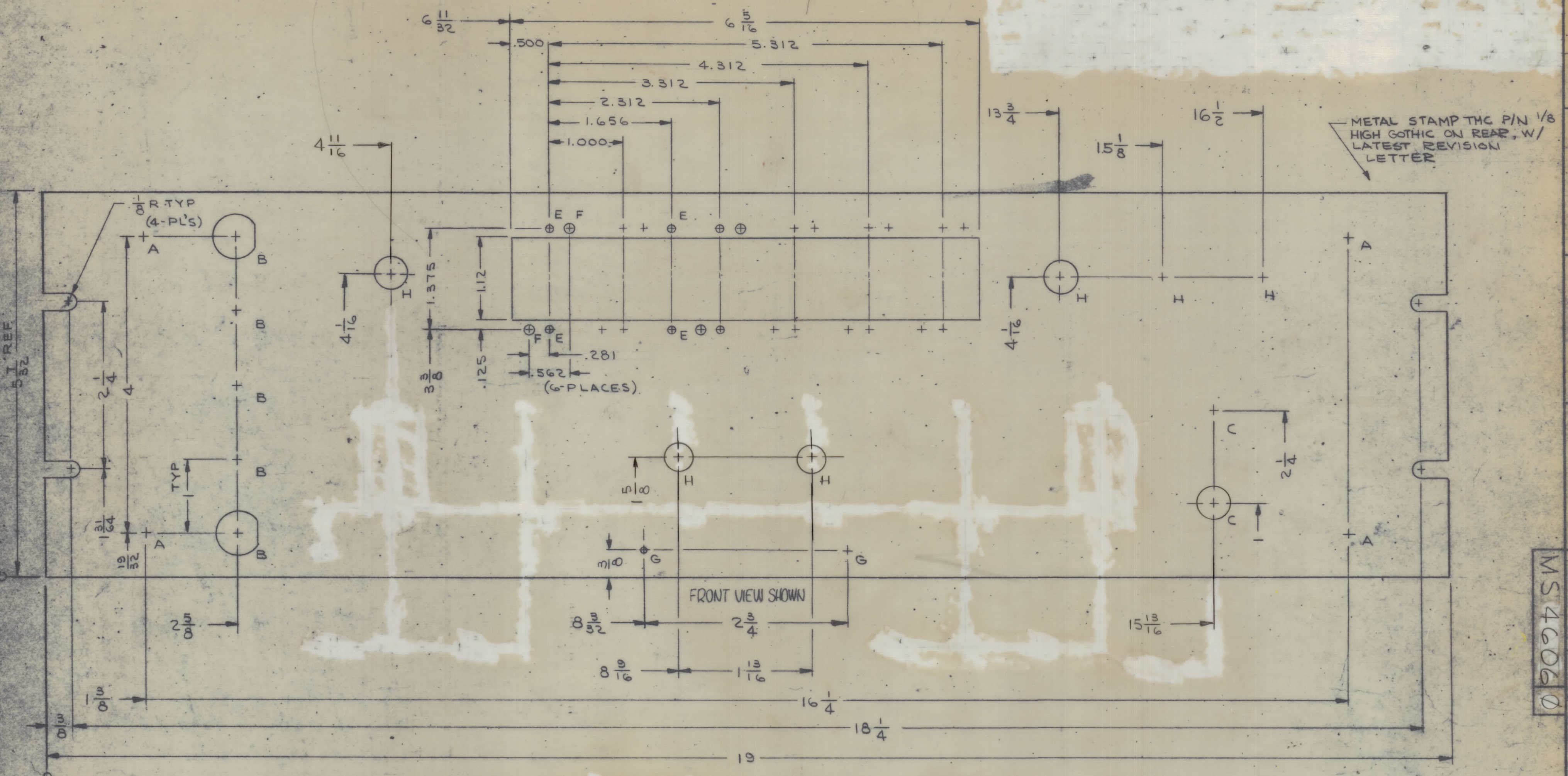
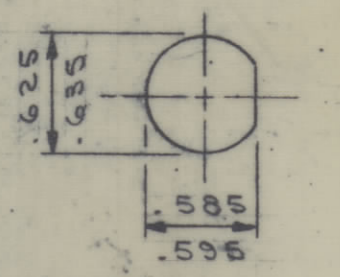


REVISIONS					
ZONE	SYM	DESCRIPTION	DATE	E.M.N. NO.	APPD
0		ORIGINAL RELEASE FOR PRODUCTION	6/1/65	-11	JC JDM



HOLE LEGEND		
HOLE	DESCRIPTION	REQ'D
A	15/64 DIA	4
B	SEE DETAIL	5
C	15/32 DIA	2
D		
E	9/64 DIA	14
F	5/32 DIA	12
G	Nº.48(.0760) DRILL	2
H	13/32	6



**MACHINING:**

- MILL ALL EDGES.
- HOLES MUST BE DRILLED, UNLESS OTHERWISE SPECIFIED.
- LATERAL BOX OF PANEL MUST BE KEPT TO .031 TOLERANCE.
- PANEL MUST BE FREE OF ALL MACHINING MARKS, GOUGES AND SCRATCHES. IF NECESSARY, SAND FRONT OF PANEL WITH NO. 120 GRIT SANDPAPER.

**FINISH NOTES:**

- S404 - IRIDITE 14 COAT.
- S114 - ZINC CHROMA (MER) FRONT AND
- S115 - SMOOTH GRAY (EL) EDGES ONLY

1	RTIF -1	
Q'TY./UNIT	MODEL USED ON	ASS'Y. NO.
SCALE	CODE	
1:1	A	

THE CONTENTS OF THIS DRAWING ARE THE EXCLUSIVE PROPERTY OF THE TECHNICAL MATERIEL CORP. ITS UNAUTHORIZED USE OR REPRODUCTION IN WHOLE OR IN PART IS STRICTLY FORBIDDEN.

REF. LD 1915

REQ'D.	ITEM	PART NUMBER	DESCRIPTION	SYMBOL
F.E. EATON LIST OF MATERIAL				
MATERIAL			THE TECHNICAL MATERIEL CORP.	
3/16 THK ALUMINUM			MAMARONECK, NEW YORK	
2024-T3			TITLE	
FINISH			PANEL, FRONT	
SEE NOTES			DRAWN	
			J. LESHINSKI	
			DATE	
			6/1/65	
			CHECKED	
			DATE	
			6/1/65	
			ELECT. DES.	
			DATE	
			6/1/65	
			MECH. DES.	
			W. JORDAN	
			DATE	
			6/1/65	
			SHEET	
			REV. LTR.	
			MS 4606 0	

MS 4606 0