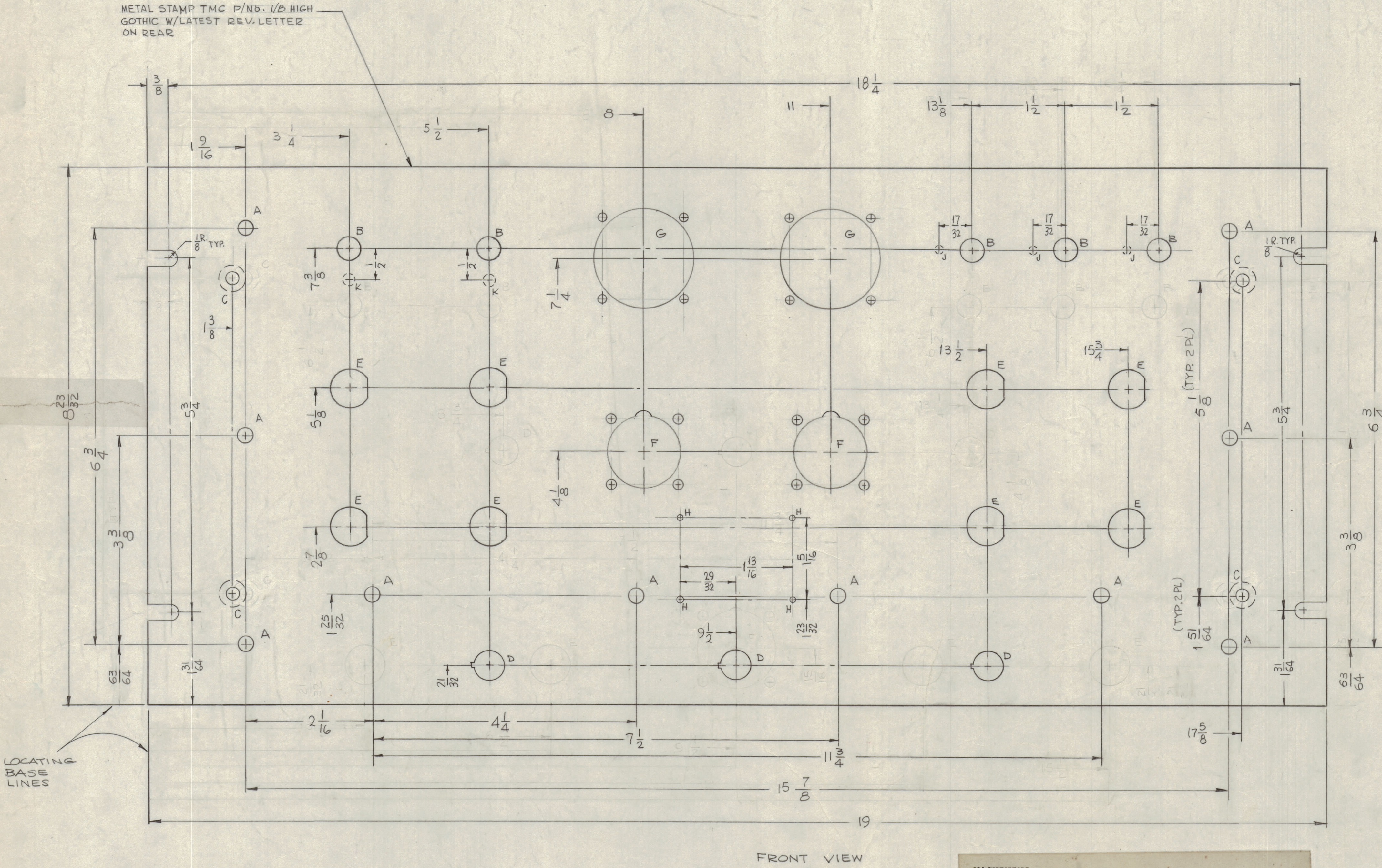
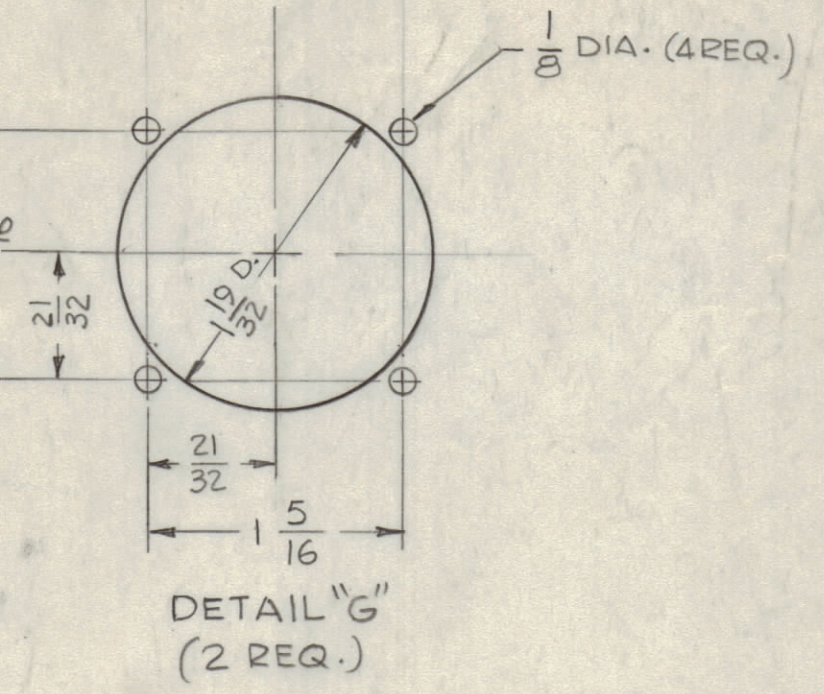
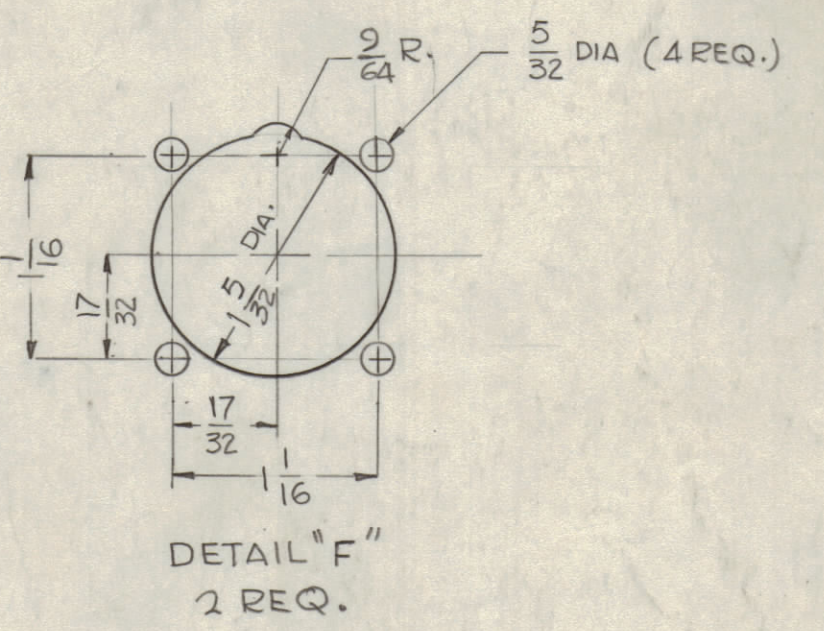
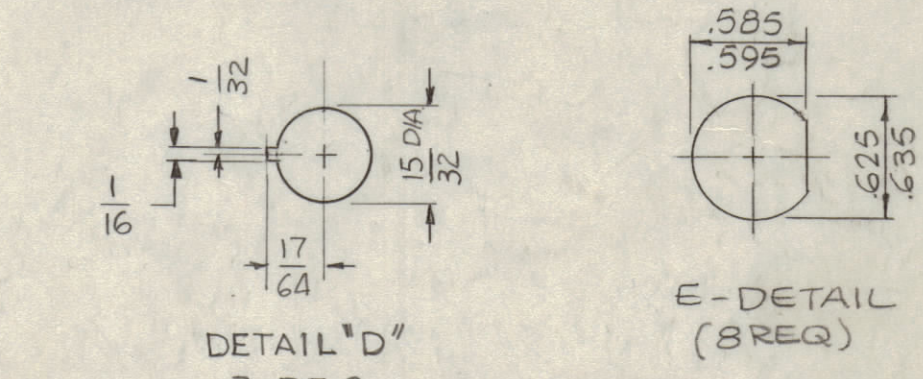


REVISIONS						
ZONE	SYM	DESCRIPTION	DATE	E.M.N. NO.	DRAFT	CHKD
X1		B, D, E, F HOLES RELOCATED	4-11-66	X1		
X2		MTG SLOTS ADDED	5-31-66	X2		
X3		H, J, K HOLES ADDED	6-10-66	X3		
X4		C HOLES RE-LOCATED	6-17-66	X4		
ORIGINAL RELEASE FOR PRODUCTION						

HOLE	DESCRIPTION	REQ.
A	15/64 DIA	10
B	3/8 DIA.	5
C	.196 DIA. C'SINK 82° TO 390 DIA	4
D	SEE DETAIL	3
E	SEE DETAIL	8
F	SEE DETAIL	2
G	SEE DETAIL	2
H	.078 DIA.	4
J	1/8 DIA X 1/16 DEEP (FROM REAR)	3
K	3/16 DIA X 1/16 DEEP (FROM REAR)	2



MACHINING:

- MILL ALL EDGES.
- HOLES MUST BE DRILLED, UNLESS OTHERWISE SPECIFIED.
- LATERAL BOW OF PANEL MUST BE KEPT TO .031 TOLERANCE
- PANEL MUST BE FREE OF ALL MACHINING MARKS, GOUGES AND SCRATCHES. IF NECESSARY, SAND FRONT OF PANEL WITH NO. 120 GRIT SANDPAPER.

FINISH NOTES:

- S404 - IRIDITE 14-2 AL-COAT.
- S114 - ZINC CHROMATE PRIMER) FRONT AND
- S115 - SMOOTH GRAY ENAMEL) EDGES ONLY

NOTES

1	AP12B	A5257
QTY/UNIT	MODEL USED ON	ASSY. NO.
SCALE	CODE	
1:1	A	

THE CONTENTS OF THIS DRAWING ARE THE EXCLUSIVE PROPERTY OF THE TECHNICAL MATERIEL CORP. ITS UNAUTHORIZED USE OR REPRODUCTION IN WHOLE OR IN PART IS STRICTLY FORBIDDEN.

REF: LD 1946

REQ'D.	ITEM	PART NUMBER	DESCRIPTION	SYMBOL
F. BUDETTI LIST OF MATERIAL				
MATERIAL		3/16THK. ALUMINUM 2024 - T3	THE TECHNICAL MATERIEL CORP. MAMARONECK, NEW YORK	
FINISH		SEE NOTES	TITLE PANEL, FRONT	
UNLESS OTHERWISE SPECIFIED DIMENSIONS ARE IN INCHES AND INCLUDE CHEMICALLY APPLIED OR PLATED FINISHES		DRAWN G.D.L.	DATE 6-20-66	FINAL APPROVAL [Signature]
DECIMALS X ± .05 XX ± .01 XXX ± .005		FRACTIONS ± 1/64 ANGLES ± 0° 30'	ELECT. DES. DATE 11-7-66	MECH. DES. DATE 11-15-66
			MS4647	REV. LTR.

MS4647