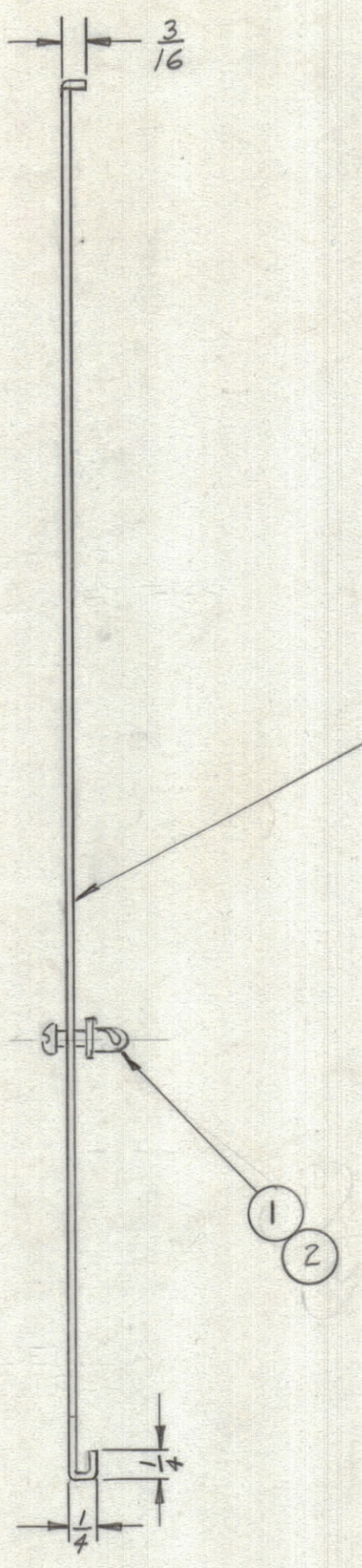
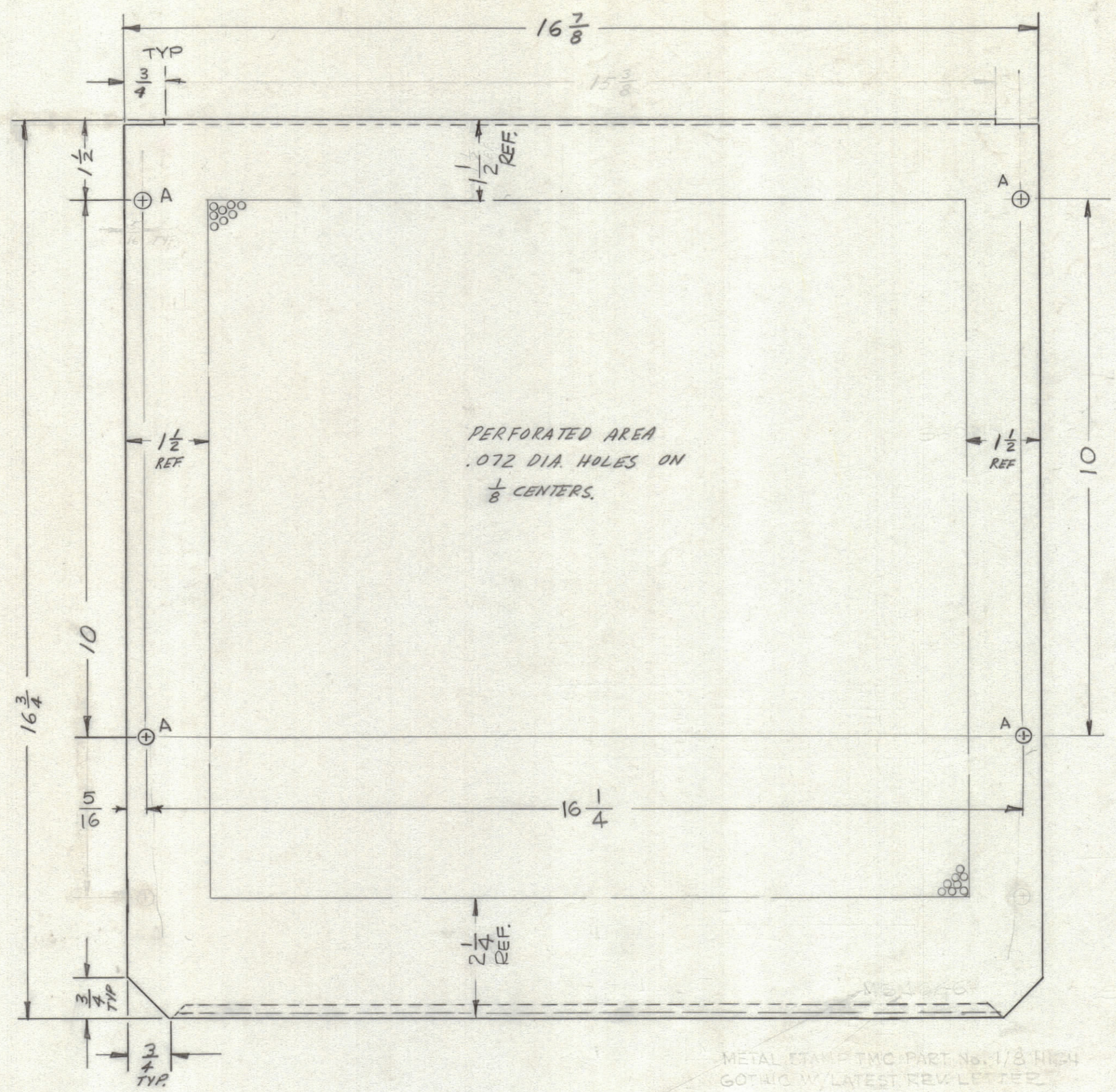


REVISIONS						
ZONE	SYM	DESCRIPTION	DATE	E.M.N. NO.	DRAFT	CHKD
	X1	ADDED ITEMS HR AND NOTE	7-24-65			
	X2	METAL STAMP RELOCATED	9-27-65			
	Ø	ORIGINAL RELEASE FOR PRODUCTION	10/24/65			



HOLE	DESCRIPTION	REQ
A	1/4 DIA.	4

METAL STAMP TMC PT/No. 1/8 HIGH GOTHIC W/LATEST REV. LETTER

METAL STAMP TMC PART No. 1/8 HIGH GOTHIC W/LATEST REV. LETTER

W/LATEST REVISION LETTERS

UNLESS OTHERWISE SPECIFIED:

1. USE MATERIAL THICKNESS FOR MAXIMUM RADIUS ON ALL BENDS
2. ALL ANGULAR BENDS 90 DEGREES
3. REMOVE ALL BURRS AND SHARP EDGES
4. ITEMS 1 & 2 TO BE SUPPLIED BY TMC ASSEMBLED BY TMC

NOTE: ITEMS 1 & 2 TO BE FURNISHED BY TMC

Q'TY/UNIT	MODEL USED ON	ASS'Y. NO.
2	RASB-1	A5191
2	RARB-1	A5192

REQ'D	ITEM	PART NUMBER	DESCRIPTION	SYMBOL
8	2	FS-109-3	RING, STUD RETAINING	
8	1	FS-110-1	STUD, SLOTTED HEAD	

LANGER LIST OF MATERIAL

MATERIAL	.051 ALUMINUM 5052-H32	THE TECHNICAL MATERIEL CORP. MAMARONECK, NEW YORK
FINISH	S404 YELLOW IRIDITE	

TITLE: COVER, TOP & BOTTOM

DRAWN	DATE	FINAL APPROVAL	DATE
CHECKED	DATE		DATE
ELECT. DES.	DATE		DATE
MECH. DES.	DATE		DATE

UNLESS OTHERWISE SPECIFIED DIMENSIONS ARE IN INCHES AND INCLUDE CHEMICALLY APPLIED OR PLATED FINISHES

DECIMALS	FRACTIONS
.X ± .05	± 1/64
.XX ± .01	ANGLES
.XXX ± .005	± 0° 30'

TOLERANCES

REVISIONS: 10/24/65

SHEET: MS4666

NOTES

THE CONTENTS OF THIS DRAWING ARE THE EXCLUSIVE PROPERTY OF THE TECHNICAL MATERIEL CORP. ITS UNAUTHORIZED USE OR REPRODUCTION IN WHOLE OR IN PART IS STRICTLY FORBIDDEN.

H
G
F
E
D
C
B
A

H
G
F
E
D
C
B
A

MS4666