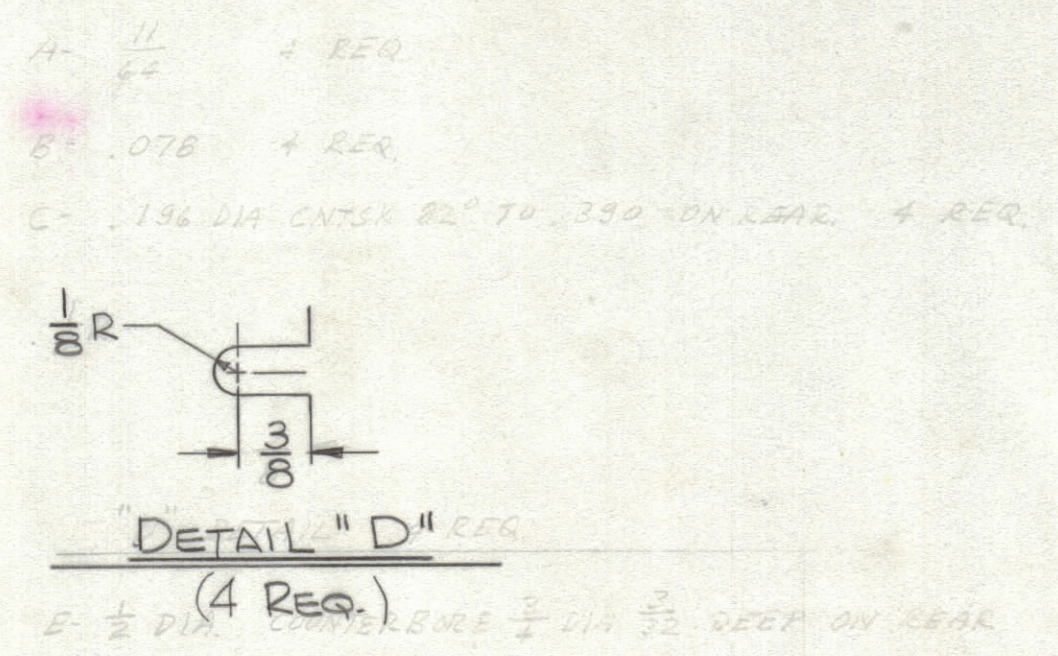
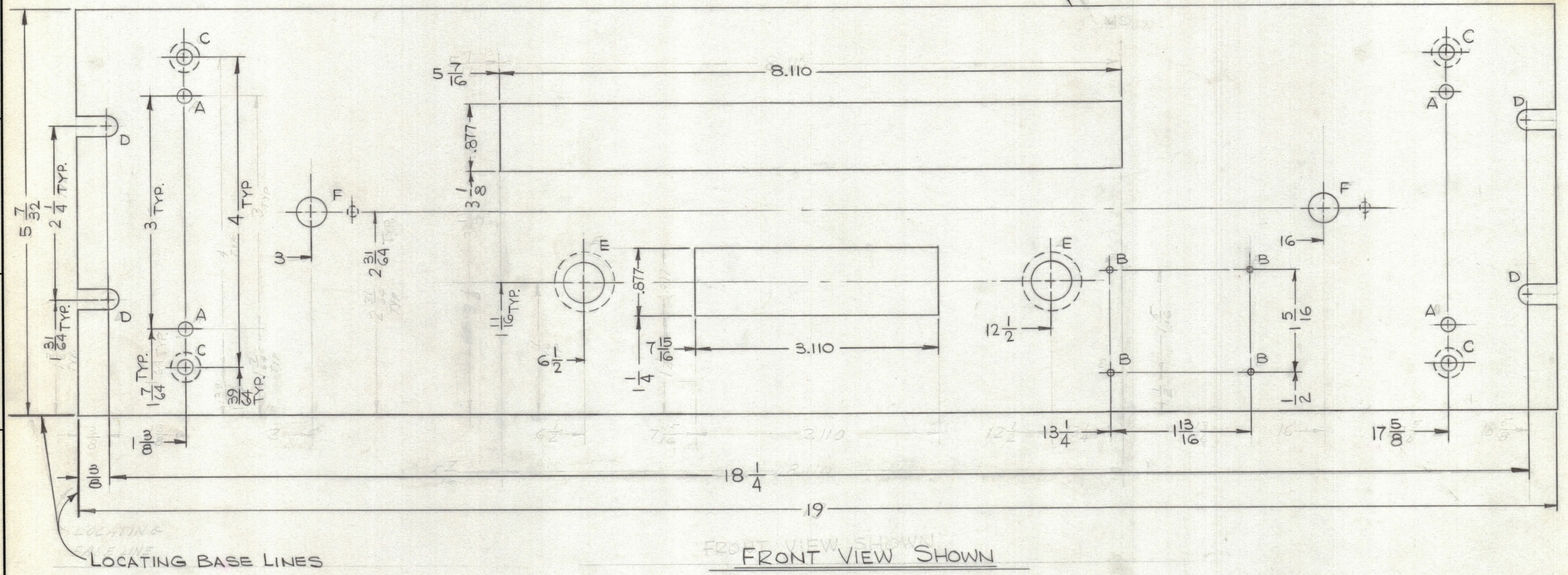


HOLE	DESCRIPTION	REQ.
A	11/64 DIA.	4
B	.078 DIA.	4
C	.196 DIA. C'SK 82° TO .390 ON REAR	4
D	SEE DETAIL	4
E	1/2 DIA. C BORE 3/4 DIA. x 3/32 DEEP ON REAR	2
F	SEE DETAIL	2

REVISIONS				
ZONE	SYM	DESCRIPTION	DATE	E.M.N. NO.
		ORIGINAL RELEASE FOR PRODUCTION	9/26/65	



MACHINING:

- MILL ALL EDGES.
- HOLES MUST BE DRILLED, UNLESS OTHERWISE SPECIFIED.
- LATERAL BOW OF PANEL MUST BE KEPT TO .031 TOLERANCE.
- PANEL MUST BE FREE OF ALL MACHINING MARKS, GOUGES AND SCRATCHES. IF NECESSARY, SAND FRONT OF PANEL WITH NO. 120 GRIT SANDPAPER.

FINISH NOTES:

- S404 - IRIDITE 14-2 AL-COAT.
- S114 - ZINC CHROMATE PRIMER } FRONT AND
- S115 - SMOOTH GRAY ENAMEL } EDGES ONLY

REF: LDI959

REQ'D.	ITEM	PART NUMBER	DESCRIPTION	SYMBOL
LANGER LIST OF MATERIAL				
MATERIAL		THE TECHNICAL MATERIEL CORP. MAMARONECK, NEW YORK		
3/16 ALUMINUM 2024-T3		TITLE LANGER PANEL, FRONT		
FINISH		SEE NOTES		
UNLESS OTHERWISE SPECIFIED DIMENSIONS ARE IN INCHES AND INCLUDE CHEMICALLY APPLIED OR PLATED FINISHES		DRAWN	DATE	FINAL APPROVAL
TOLERANCES		DATE	DATE	DATE
DECIMALS		ELECT. DES.		MECH. DES.
FRACTIONS		DATE		
ANGLES		DATE		
± 0° 30'		DATE		

Q'TY./UNIT	MODEL USED ON	ASS'Y. NO.
1	RASB-1	A5132
SCALE	CODE	
1:1		
THE CONTENTS OF THIS DRAWING ARE THE EXCLUSIVE PROPERTY OF THE TECHNICAL MATERIEL CORP. ITS UNAUTHORIZED USE OR REPRODUCTION IN WHOLE OR IN PART IS STRICTLY FORBIDDEN.		

NOTES

MS4671