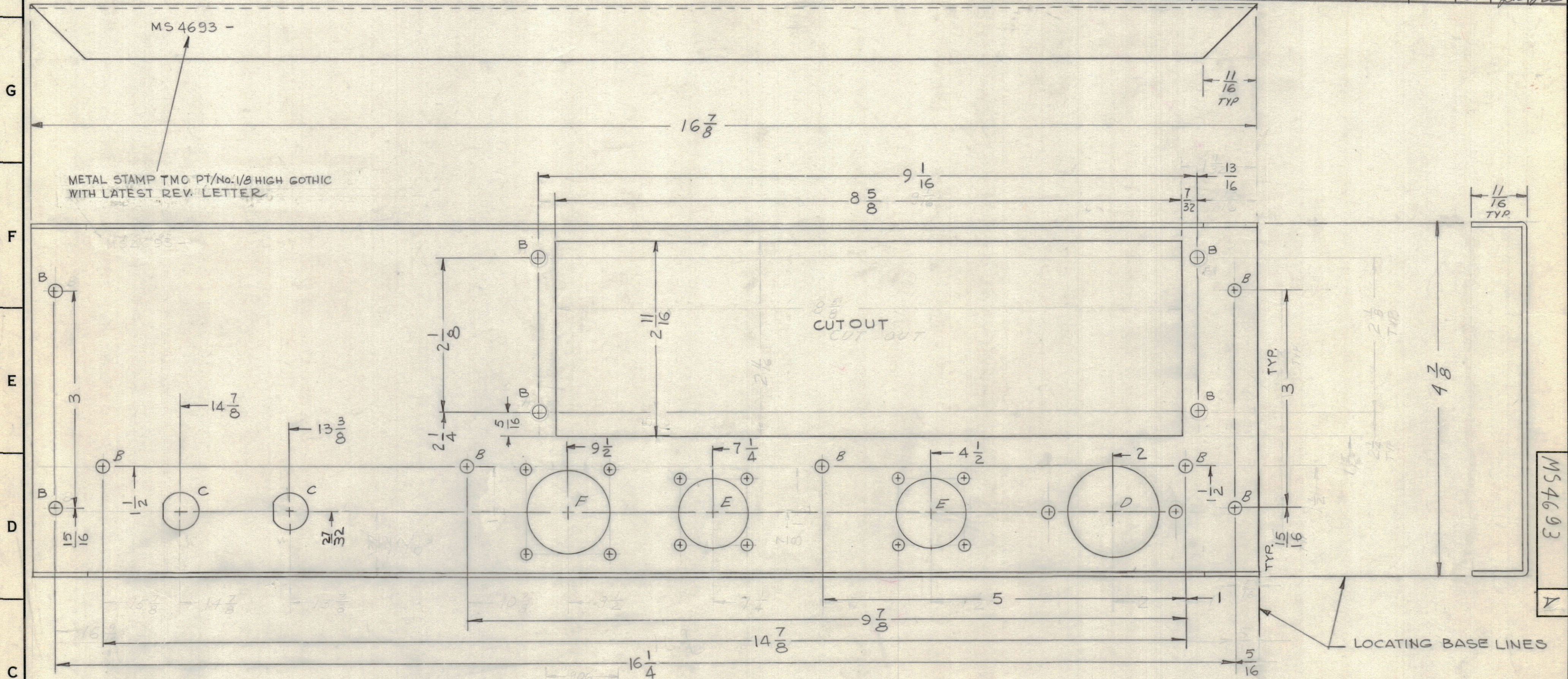
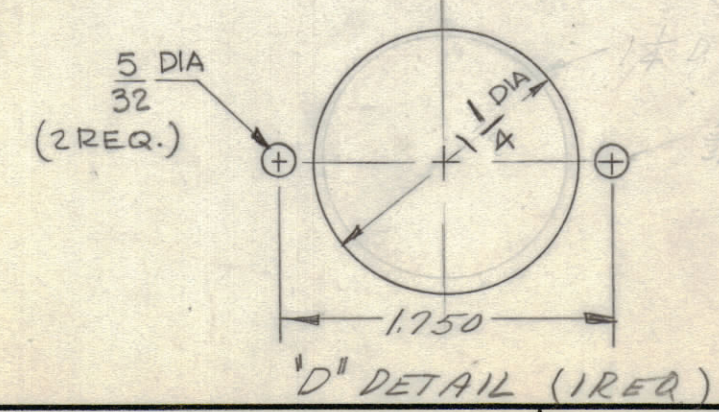
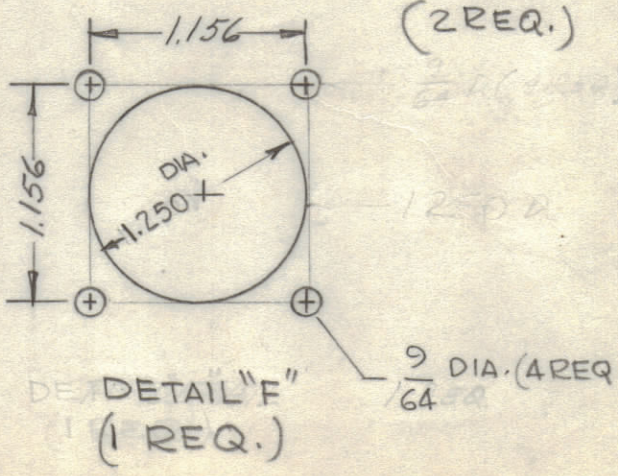
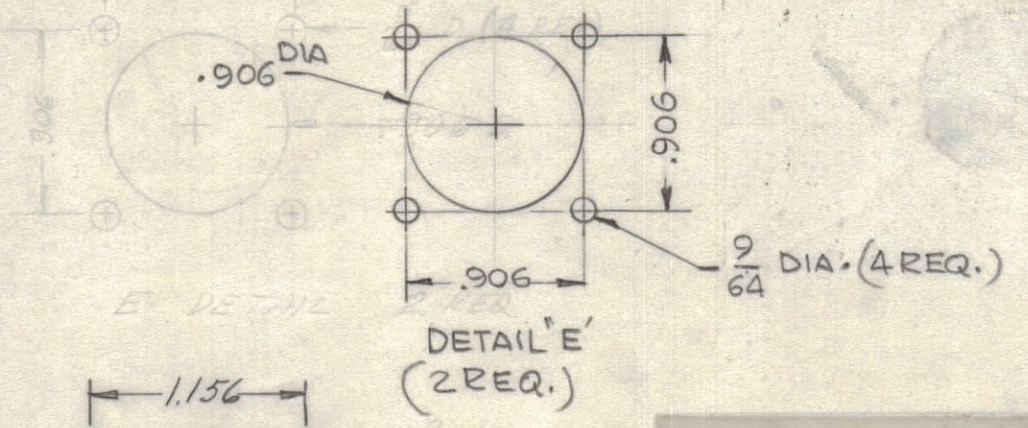
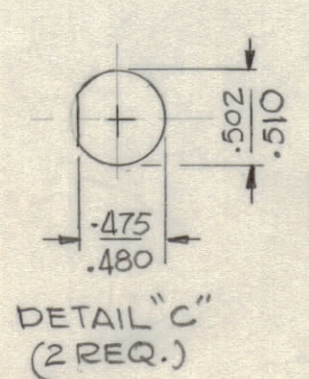


REVISIONS						
ZONE	SYM	DESCRIPTION	DATE	E.M.N. NO.	DRAFT	CHKD
	X1	Added 1 "C" Hole	10 Aug 65		BM	
	X2	Center Line of CDEF Holes was 23/32	14 Aug 65		BM	
	X3	PICTORIAL CLARIFIED-DIM 7/8 WAS 27/32 & DIM .01A 1 3/8 ON "D" DETAIL WAS 1 1/4 4 "B" HOLES ADDED, 4 "A" HOLES 1 3/4 DIA DELETED	9-13-65	X3	G.D.L.	
	X4	METAL STAMP RELOCATED	9-27-65	X4	G.D.L.	
	Ø	ORIGINAL RELEASE FOR PRODUCTION	10/28/65	Ø		
	A	DIM'S 27/32 WAS 7/8, 1 1/4 WAS 1 3/8 (ON DET. "D")	11/5/65	15130	M.N.	J.F. J.P.P.



HOLE	DESCRIPTION	REQ.
A	DELETED	
B	11/64 DIA.	12
C	SEE DETAIL	2
D	SEE DETAIL	1
E	SEE DETAIL	2
F	SEE DETAIL	1



UNLESS OTHERWISE SPECIFIED:  
 1. USE MATERIAL THICKNESS FOR MAXIMUM RADIUS ON ALL BENDS  
 2. ALL ANGULAR BENDS 90 DEGREES  
 3. REMOVE ALL BURRS AND SHARP EDGES

REQ'D.	ITEM	PART NUMBER	DESCRIPTION	SYMBOL
REF: LD1975				
LANGER LIST OF MATERIAL				
MATERIAL .064 ALUMINUM		THE TECHNICAL MATERIEL CORP.		
5052-H32		MAMARONECK, NEW YORK		
FINISH S404 YEL. IRIDITE		TITLE PLATE, REAR		
UNLESS OTHERWISE SPECIFIED DIMENSIONS ARE IN INCHES AND INCLUDE CHEMICALLY APPLIED OR PLATED FINISHES		DRAWN [Signature]		
DECIMALS .X ± .05		DATE 11/11/65		
XX ± .01		DATE 9/29/65		
XXX ± .005		DATE 11/11/65		
TOLERANCES ANGLES ± 1/64 ± 0° 30'		ELECT. DES. [Signature]		
		MECH. DES. [Signature]		
		DATE 11/11/65		
		SHEET		
		REV. LTR.		

NOTES

THE CONTENTS OF THIS DRAWING ARE THE EXCLUSIVE PROPERTY OF THE TECHNICAL MATERIEL CORP. ITS UNAUTHORIZED USE OR REPRODUCTION IN WHOLE OR IN PART IS STRICTLY FORBIDDEN.