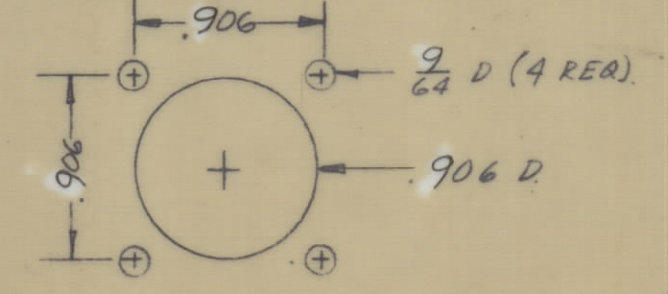
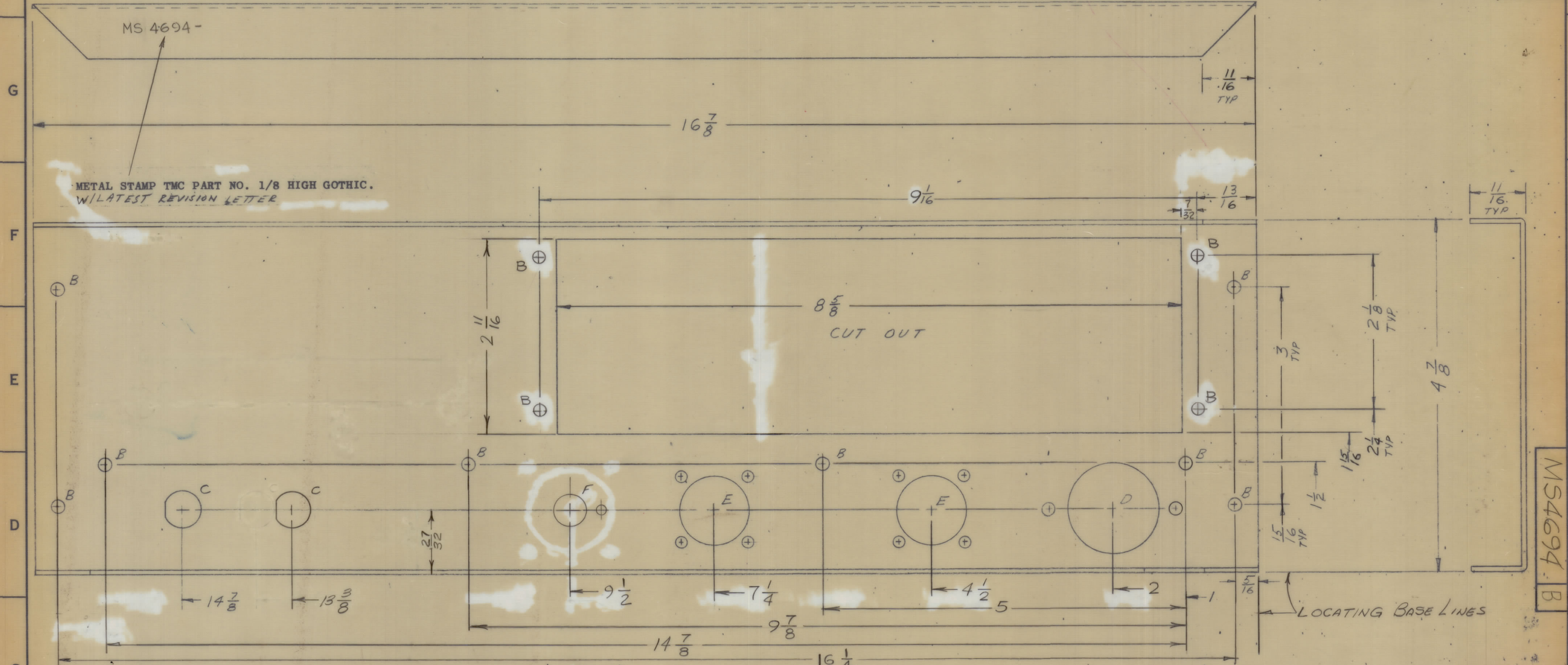
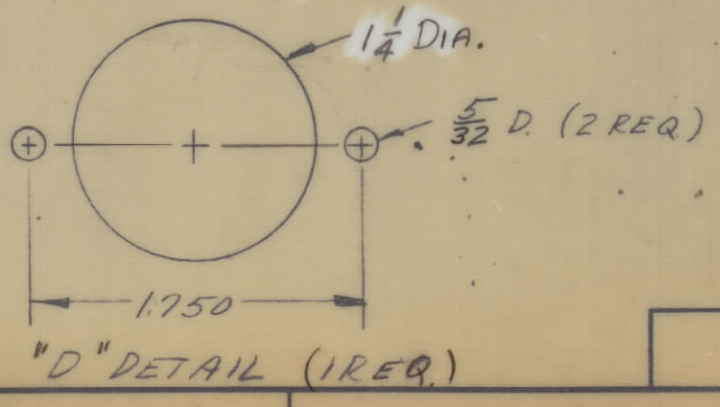
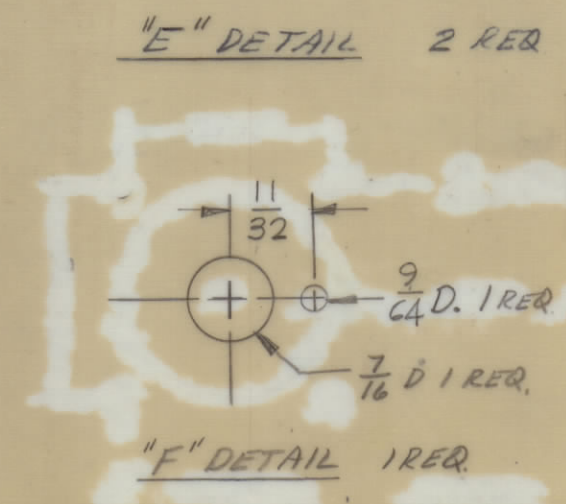
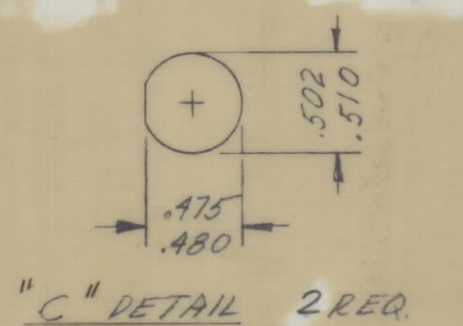


REVISIONS							
ZONE	SYM	DESCRIPTION	DATE	E.M.N. NO.	DRAFT	CHKD	APPD
B		ON DETAIL F, 9/64 DIA HOLE WAS 1/8	10-3-66	16966	110	JTB	RR

REVISIONS							
ZONE	SYM	DESCRIPTION	DATE	E.M.N. NO.	DRAFT	CHKD	APPD
X1		Added 1/8" Hole	9 Aug 65				
X2		Center line of C, D, E Holes w/ 23/32 Add F Hole	19 Aug 65				
X3		"D" HOLE WAS 1/4 DIA. "F" DETAIL 1/82 WAS 7/16; "E" OF "C", "F", "E", "D" HOLES WAS 27/32 CHG 4 "A" HOLES 15/64 DIA. TO "B" HOLES	9-15-65				HCA
X4		METAL STAMP RELOCATED	9-27-65				E-DL
B		ORIGINAL RELEASE FOR PROD	10/20/65				
A		DIMS. 27/32 WAS 7/8, 1/4 WAS 1/8 (ON DET. "D")	11/16/65	15130	J.V.N.	JTB	RR



- UNLESS OTHERWISE SPECIFIED:
1. USE MATERIAL THICKNESS FOR MAXIMUM RADIUS ON ALL BENDS
  2. ALL ANGULAR BENDS 90 DEGREES
  3. REMOVE ALL BURRS AND SHARP EDGES



HOLE	DESCRIPTION	REQ.
A	DELETED	
B	11/64 DIA.	12
C	SEE DETAIL	2
D	SEE DETAIL	1
E	SEE DETAIL	2
F	SEE DETAIL	1

REF: LD1976

REQ'D	ITEM	PART NUMBER	DESCRIPTION	SYMBOL
	LANGER			
LIST OF MATERIAL				
MATERIAL .064 ALUMINUM			THE TECHNICAL MATERIEL CORP.	
5052-H32			MAMARONECK, NEW YORK	
FINISH S404			TITLE	
YEL. IRIDITE			PLATE, REAR	
UNLESS OTHERWISE SPECIFIED		DRAWN	DATE	FINAL APPROVAL
DIMENSIONS ARE IN INCHES AND INCLUDE		JTB	11/22/65	JTB
CHEMICALLY APPLIED OR PLATED FINISHES		CHECKED	DATE	
		JTB	9/13/65	
DECIMALS .X ± .05		ELECT. DES.	DATE	
.XX ± .01		JTB		
.XXX ± .005		MECH. DES.	DATE	
TOLERANCES				
± 1/64		MS4694 B		
ANGLES ± 0° 30'		SHEET		

NOTES