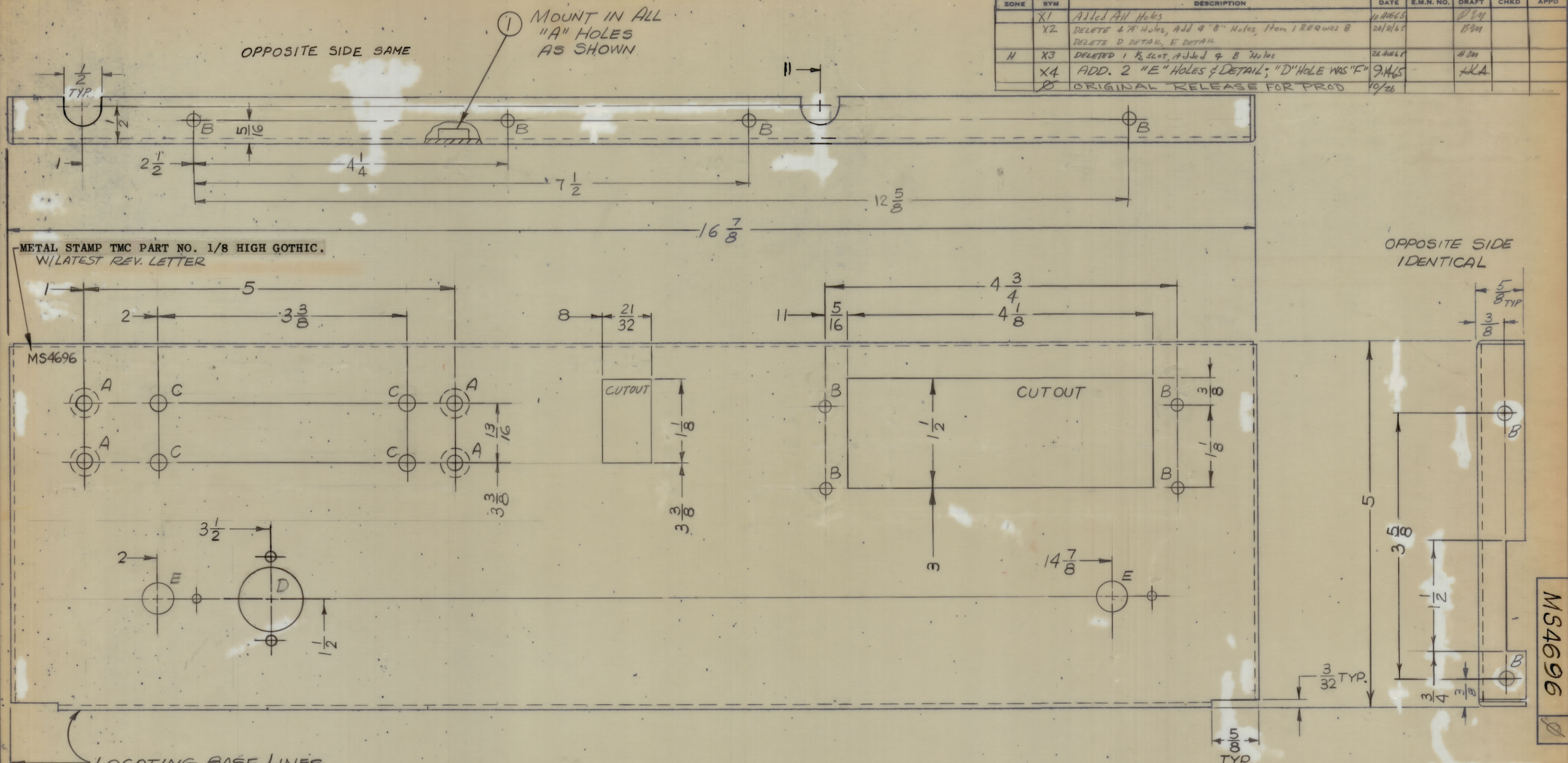
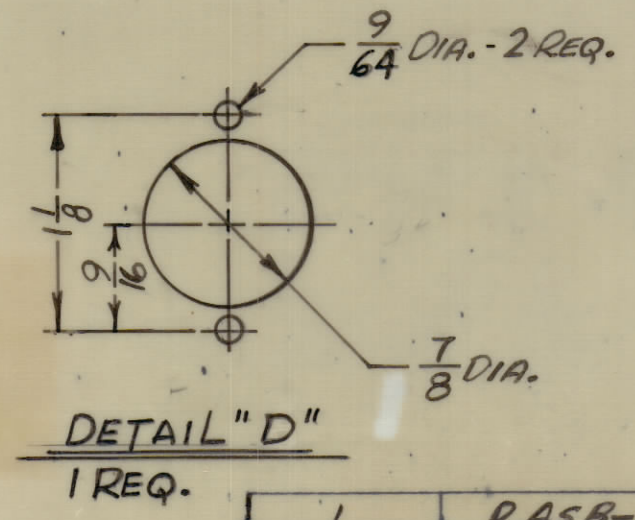
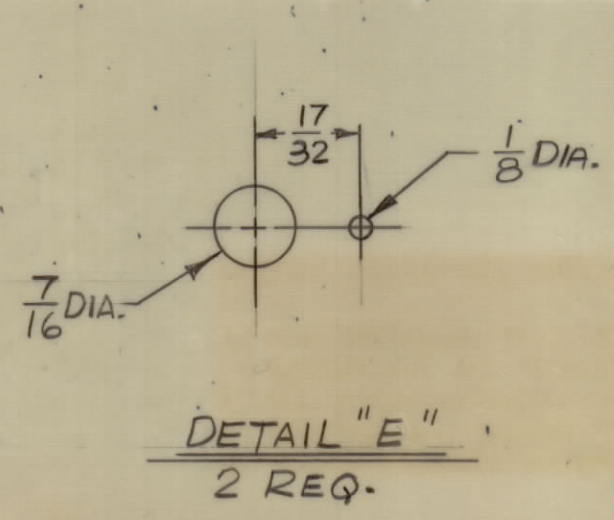


REVISIONS						
ZONE	SYM	DESCRIPTION	DATE	E.M.N. NO.	DRAFT	CHKD
	X1	Added All Holes	10 AUG 65		BM	
	X2	DELETE 4 "A" HOLES, ADD 4 "B" HOLES, ITEM 1 REQ WAS 8	24/9/65		BM	
	X3	DELETE D DETAIL, E DETAIL	26 AUG 65		BM	
	X4	ADD. 2 "E" HOLES & DETAIL; "D" HOLE WAS "F"	9.14.65		KA	
	Ø	ORIGINAL RELEASE FOR PROD	10/26			



- UNLESS OTHERWISE SPECIFIED:
1. USE MATERIAL THICKNESS FOR MAXIMUM RADIUS ON ALL BENDS
 2. ALL ANGULAR BENDS 90 DEGREES
 3. REMOVE ALL BURRS AND SHARP EDGES
 4. MOUNT INSERTS AFTER FINISHING

HOLE	DESCRIPTION	REQ.
A	.191-.194	4
B	11/64 DIA.	12
C	13/64 DIA.	4
D	SEE DETAIL	1
E	SEE DETAIL	2



REF: LD1992

4	1	NT129-632-4	NUT, PLAIN, SPLINE	A
REQ'D.	ITEM	PART NUMBER	DESCRIPTION	SYMBOL
LANGER LIST OF MATERIAL				
MATERIAL .064 ALUMINUM			THE TECHNICAL MATERIEL CORP.	
5052-H32			MAMARONECK, NEW YORK	
FINISH 5404 YEL. IRIDITE			TITLE	
			SUB-CHASSIS, COMPONENT MTG.	
DRAWN BM		DATE 12/26/65	FINAL APPROVAL	
CHECKED JCB		DATE 9/29/65	DATE 12/26/65	
ELECT. DES. RPD		DATE	MS4696	
MECH. DES. RPD		DATE	REV. LTR.	
DECIMALS .X ± .05		TOLERANCES		ANGLES ± 1/64
XX ± .01		FRACTIONS ± 1/64		± 0° 30'
XXX ± .005				

NOTES

THE CONTENTS OF THIS DRAWING ARE THE EXCLUSIVE PROPERTY OF THE TECHNICAL MATERIEL CORP. ITS UNAUTHORIZED USE OR REPRODUCTION IN WHOLE OR IN PART IS STRICTLY FORBIDDEN.