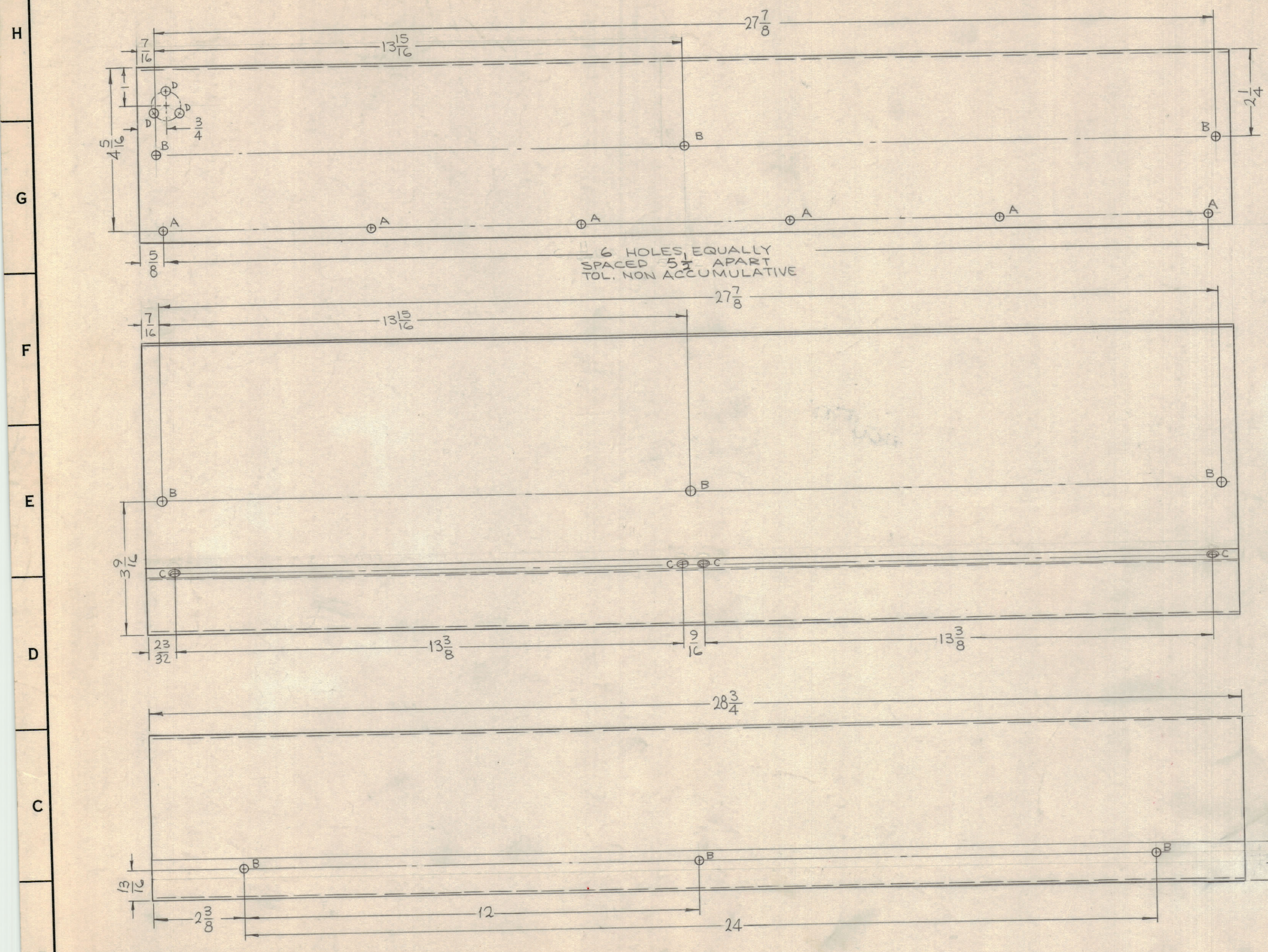


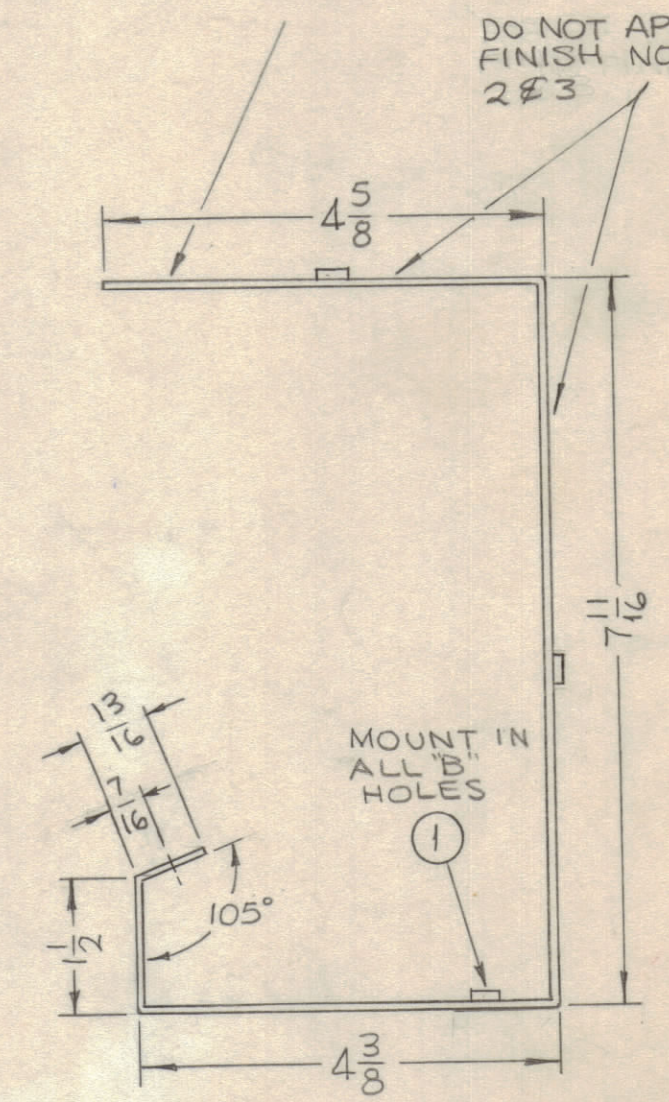
REVISIONS					
ZONE	SYM	DESCRIPTION	DATE	E.M.N. NO.	APPD
	Ø	ORIGINAL RELEASE FOR PRODUCTION	7/10/69		



6 HOLES, EQUALLY SPACED 5 3/4" APART TOL. NON ACCUMULATIVE

MARK TMC PART NO. (MS 4732-) 1/8" HIGH GOTHIC W/LATEST REV. LETTER.

DO NOT APPLY FINISH NOTES 2#3



DO NOT APPLY FINISH NOTES 2#3

HOLES	DESCRIPTION	REQ.
A	11/64 DIA.	6
B	.221-.224 DIA.	9
C	DR.144 DIA. C'SINK 82° TO .284 D	4
D	15/64 DIA. 120° APART ON 3/8R.	3

UNLESS OTHERWISE SPECIFIED:

- USE MATERIAL THICKNESS FOR MAXIMUM RADIUS ON ALL BENDS
- ALL ANGULAR BENDS 90 DEGREES
- REMOVE ALL BURRS AND SHARP EDGES
- MOUNT INSERTS AFTER FINISHING

- FINISH NOTES:
- S404 - IRIDITE 14-2 AL-COAT - ALL SURFACES
 - S114 - ZINC CHROMATE PRIMER - AREAS SHOWN
 - S115 - SMOOTH GRAY ENAMEL

REQ'D.	ITEM	PART NUMBER	DESCRIPTION	SYMBOL
9	1	NT129-832-4	NUT, PLAIN, SPLINE	B

LIST OF MATERIAL	
F. BUDETTI	THE TECHNICAL MATERIEL CORP. MAMARONECK, NEW YORK
MATERIAL .081 THICK ALUMINUM 5052-H32	TITLE METER BOX, MAIN FRAME
FINISH SEE NOTES	

SCALE	CODE	ASS'Y. NO.	DATE	FINAL APPROVAL	DATE
1/2:1	A		3-27-65	SPM	7/10/69

UNLESS OTHERWISE SPECIFIED DIMENSIONS ARE IN INCHES AND INCLUDE CHEMICALLY APPLIED OR PLATED FINISHES

DECIMALS	FRACTIONS	TOLERANCES	ANGLES
.X ± .05	± 1/64		± 30'
.XX ± .01			
.XXX ± .005			

DRAWN	CHECKED	ELECT. DES.	MECH. DES.	DATE	DATE	DATE	DATE

SHEET	REV. LTR.
MS4732	Ø

NOTES

THE CONTENTS OF THIS DRAWING ARE THE EXCLUSIVE PROPERTY OF THE TECHNICAL MATERIEL CORP. ITS UNAUTHORIZED USE OR REPRODUCTION IN WHOLE OR IN PART IS STRICTLY FORBIDDEN.