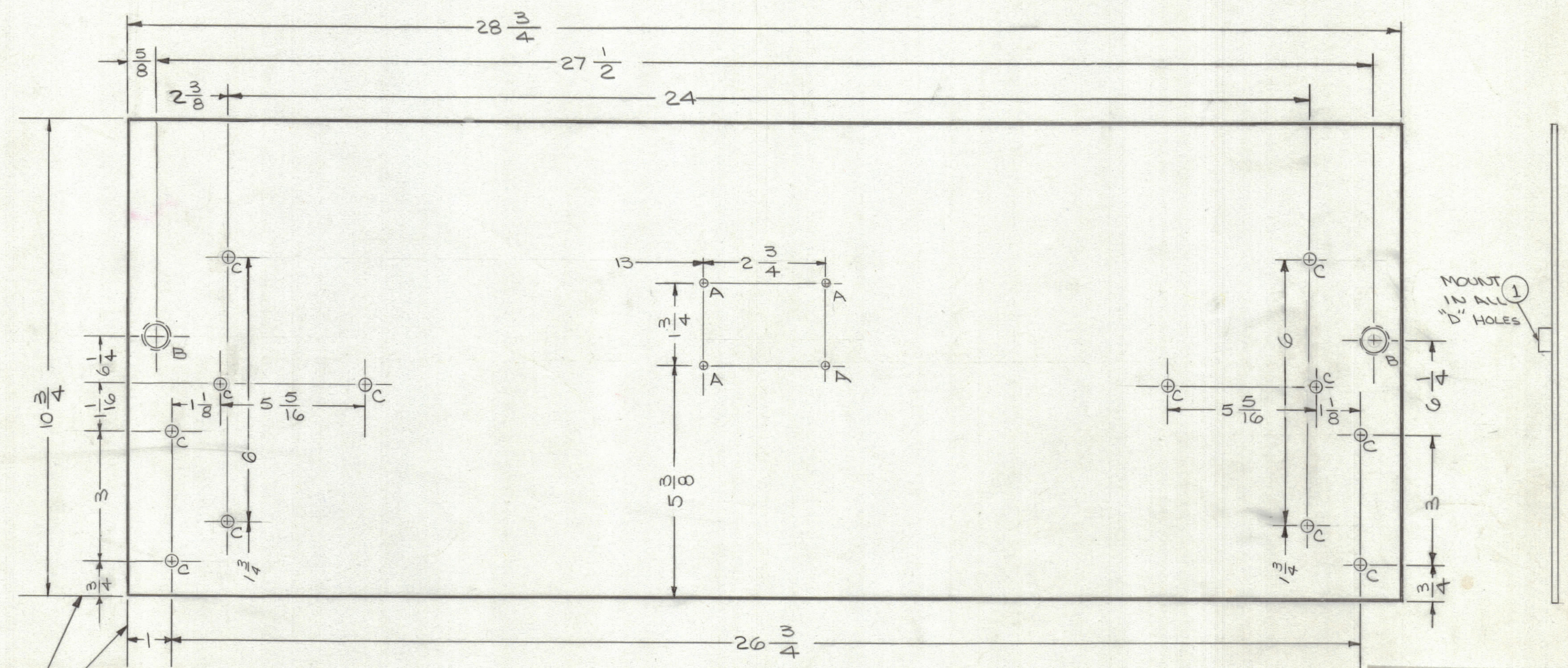


REVISIONS						
ZONE	SYM	DESCRIPTION	DATE	E.M.N. NO.	DRAFT	CHKD
	Ø	ORIGINAL RELEASE FOR PRODUCTION	8/31/65	Ø	HYV.	
	A	DIM. 1 3/4 ADDED (2 PLs)	11/22/65	15138	HYV.	8/16/1965



METAL STAMP TMC PART NO. (MS4734-)  
1/8 HIGH GOTHIC W/LATEST  
REV. LETTER (ON REAR)

HOLE	DESCRIPTION	REQ
A	.078 DIA	4
B	DR. 453 C' SINK 82° X .578 DIA.	2
C	15/64 DIA	12

**MACHINING:**

- MILL ALL EDGES.
- HOLES MUST BE DRILLED, UNLESS OTHERWISE SPECIFIED.
- LATERAL BOW OF PANEL MUST BE KEPT TO .031 TOLERANCE.
- PANEL MUST BE FREE OF ALL MACHINING MARKS, GOUGES AND SCRATCHES. IF NECESSARY, SAND FRONT OF PANEL WITH NO. 120 GRIT SANDPAPER.

**FINISH NOTES:**

- S404 - IRIDITE 14-2 AL-COAT.
- S114 - ZINC CHROMATE PRIMER } FRONT AND
- S115 - SMOOTH GRAY ENAMEL } EDGES ONLY

OR  
PRIME AND PAINT PER CUSTOMER'S SPECIFICATIONS.

**NOTES**

1	HURC-2	
Q'TY./UNIT	MODEL USED ON	ASS'Y. NO.
SCALE	CODE	
V2:1	A	

THE CONTENTS OF THIS DRAWING ARE THE EXCLUSIVE PROPERTY OF THE TECHNICAL MATERIEL CORP. ITS UNAUTHORIZED USE OR REPRODUCTION IN WHOLE OR IN PART IS STRICTLY FORBIDDEN.

2	1	NT 124	CAPTIVE INSERT
REQ'D.	ITEM	PART NUMBER	DESCRIPTION
BUDETTI LIST OF MATERIAL			
MATERIAL		THE TECHNICAL MATERIEL CORP.	
3/16 THICK ALUM.		MAMARONECK, NEW YORK	
2024-TB		TITLE	
FINISH		PANEL, FRONT	
SEE NOTES		DRAWN	
UNLESS OTHERWISE SPECIFIED		DATE	
DIMENSIONS ARE IN INCHES AND INCLUDE		8-30-65	
CHEMICALLY APPLIED OR PLATED FINISHES		CHECKED	
DECIMALS		DATE	
.X ± .05		11/19/65	
.XX ± .01		DATE	
.XXX ± .005		8-31-65	
FRACTIONS		FINAL APPROVAL	
TOLERANCES ± 1/64		MS4734	
ANGLES ± 0° 30'		DATE	
		8-31-65	
		SHEET	
		REV. LTR.	
		A	