

7

6

5

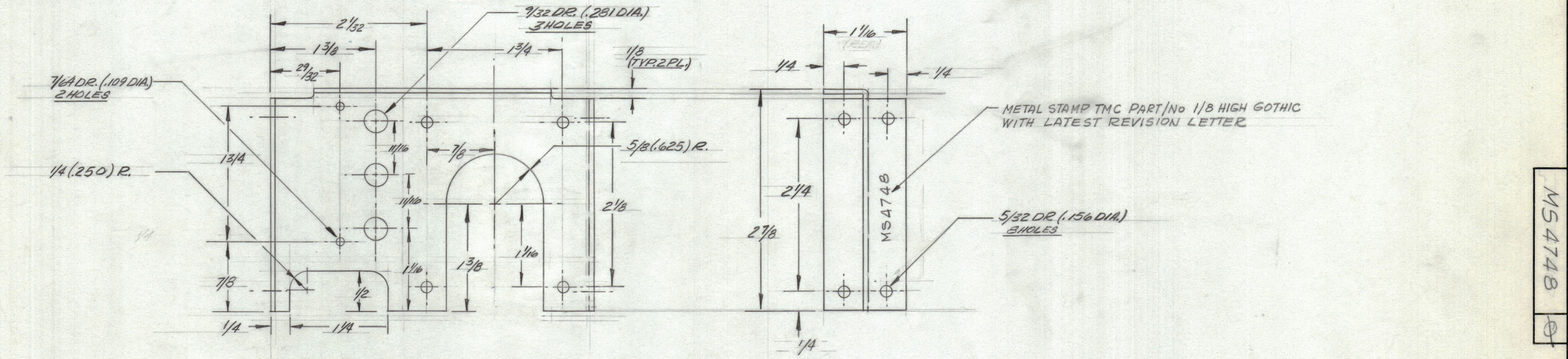
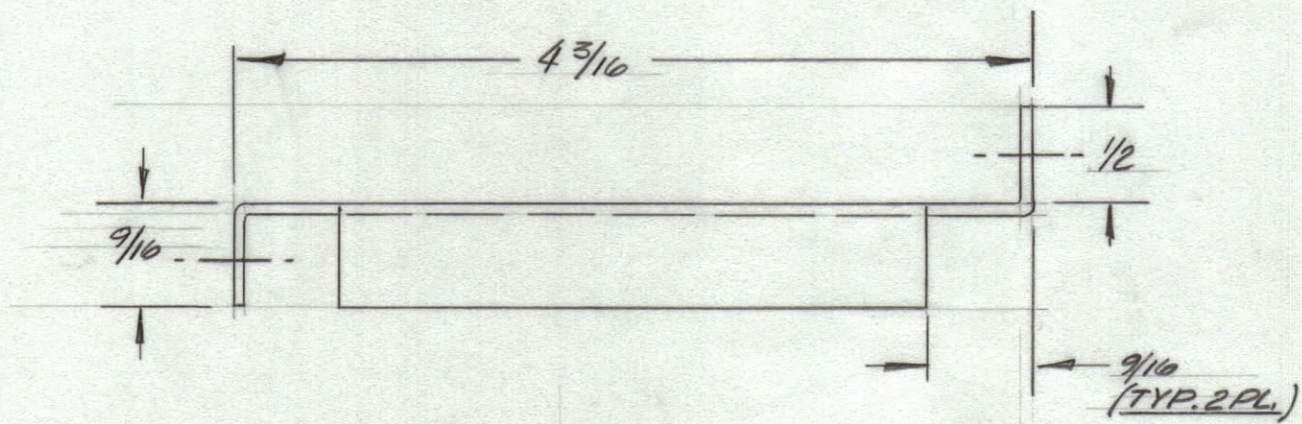
4

3

2

1

REVISIONS							
ZONE	SYM	DESCRIPTION	DATE	E.M.N. NO.	DRAFT	CHKD	APPD
	X1	MATERIAL WAS .062 5005-H14 - METAL STAMP, FINISH NOTE, Y NOTES ADDED	9-3-65	X1	GDL		
	Ø	ORIGINAL RELEASE FOR PRODUCTION	7/10/69		U		



MS4748

REF: LD 1999

- UNLESS OTHERWISE SPECIFIED:
- 1. USE MATERIAL THICKNESS FOR MAXIMUM RADIUS ON ALL BENDS
  - 2. ALL ANGULAR BENDS 90 DEGREES
  - 3. REMOVE ALL BURRS AND SHARP EDGES

ONE	CDN-1	
QTY./UNIT	MODEL USED ON	ASSY. NO.
SCALE FULL	CODE A	

THE CONTENTS OF THIS DRAWING ARE THE EXCLUSIVE PROPERTY OF THE TECHNICAL MATERIEL CORP. ITS UNAUTHORIZED USE OR REPRODUCTION IN WHOLE OR IN PART IS STRICTLY FORBIDDEN.

REQ'D.		ITEM		PART NUMBER		DESCRIPTION		SYMBOL	
LIST OF MATERIAL 5015-9									
MATERIAL .062 THK. ALUMINUM 5052-H32						THE TECHNICAL MATERIEL CORP. MAMARONECK, NEW YORK			
FINISH 5404 YEL. IRIDITE						TITLE BRACKET, MTG. TRANSFORMER			
DRAWN E.D. JENSEN			DATE 10/14/64		FINAL APPROVAL <i>[Signature]</i>		DATE 7/10/69		
CHECKED <i>[Signature]</i>			DATE 1/15/68		DATE MS4748		REV. LTR. Ø		
ELECT. DES. <i>[Signature]</i>			DATE 1/15/68		SHEET				

NOTES

7

6

5

4

3

2

1