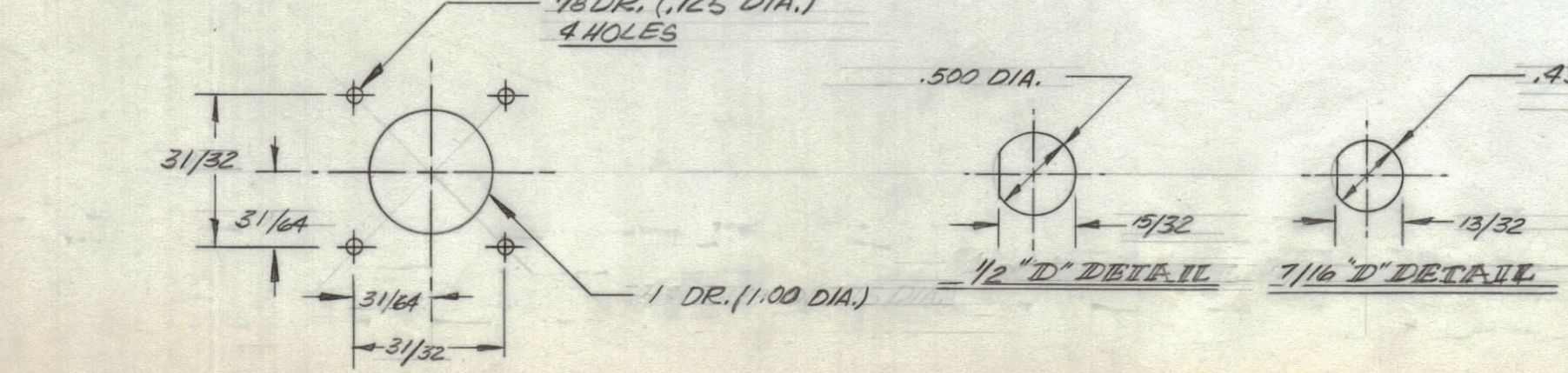
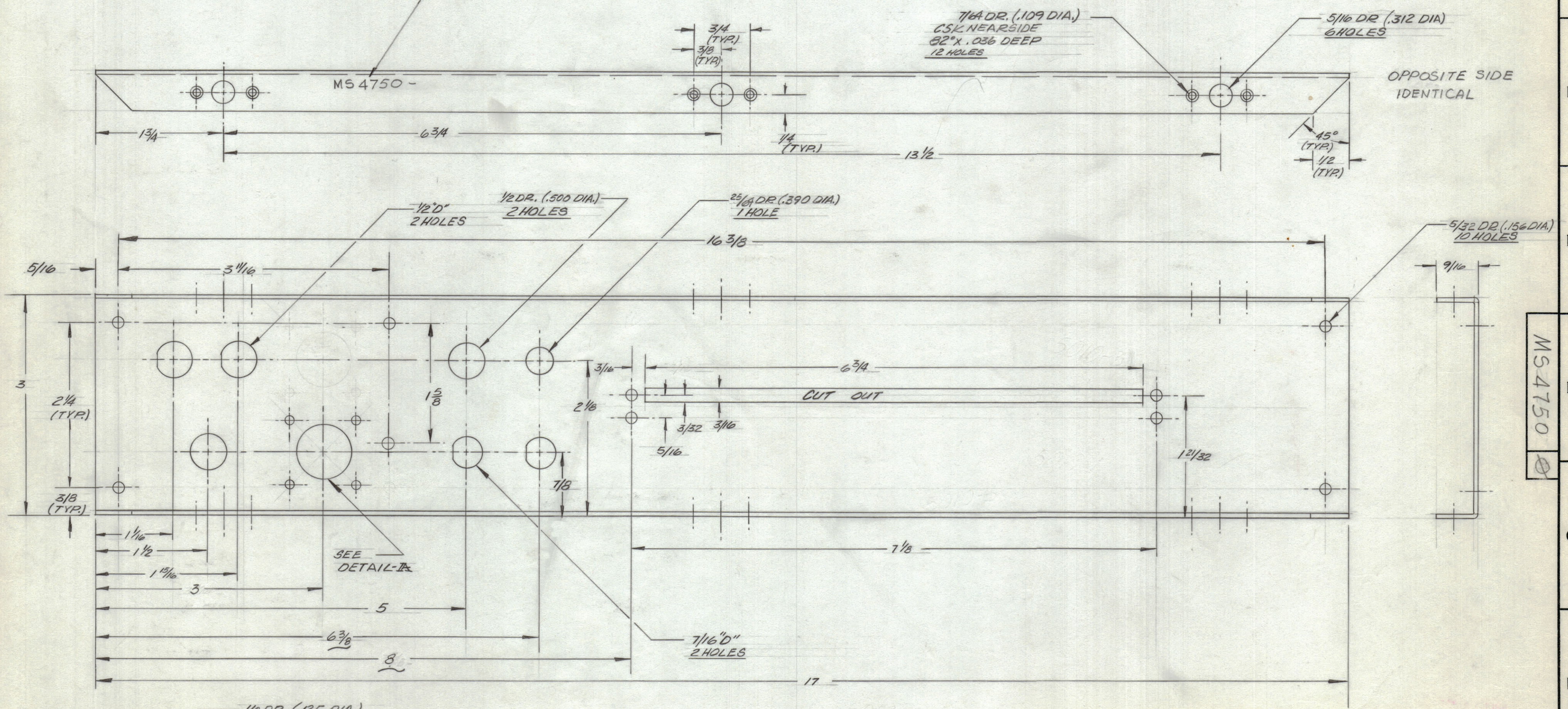


REVISIONS						
ZONE	SYM	DESCRIPTION	DATE	E.M.N. NO.	DRAFT	CHKD APPD
	X1	CHANGED LENGTH OF BARRIER STRIP CUT-OUT FROM 7/8	10/7/64		E.D.J.	
	X2	REMOVED DG CONNECTOR	11/14/64		E.D.J.	
	X3	CHANGED CSK. DEPTHS	12/15/64		E.D.J.	
	X4	CHANGED DIVIDER CHANNEL HOLES	11/17/64		E.D.J.	
	X5	MATERIAL WAS .062 5005-H32 - METAL STAMP FINISH NOTE ADDED	9-3-65	X5	G.D.L.	
	Ø	ORIGINAL RELEASE FOR PRODUCTION	7/10/69	Ø	Ø	

UNLESS OTHERWISE SPECIFIED:
 1. USE MATERIAL THICKNESS FOR MAXIMUM RADIUS ON ALL BENDS
 2. ALL ANGULAR BENDS 90 DEGREES
 3. REMOVE ALL BURRS AND SHARP EDGES

METAL STAMP TMC PART NO. 1/8 HIGH GOTHIC WITH LATEST REVISION LETTER



REF: 1997

REQ'D.	ITEM	PART NUMBER	DESCRIPTION	SYMBOL
LIST OF MATERIAL 5015-2 D				
MATERIAL		.062 THK ALUMINUM 5052-H32		
FINISH		5A04 YEL. IRIDITE		
		TITLE: PLATE, REAR		
DRAWN		DATE	FINAL APPROVAL	DATE
E.D. JENSEN		10/16/64	[Signature]	7/10/69
CHECKED		DATE		
E.D.J.		10/16/64		
ELECT. DES.		DATE		
MECH. DES.		DATE		
		DATE	SHEET	REV. LTR.
		10/16/64	MS4750	Ø

ONE	CDN-1	
Q'TY./UNIT	MODEL USED ON	ASS'Y. NO.
SCALE	CODE	
FULL	A	
THE CONTENTS OF THIS DRAWING ARE THE EXCLUSIVE PROPERTY OF THE TECHNICAL MATERIEL CORP. ITS UNAUTHORIZED USE OR REPRODUCTION IN WHOLE OR IN PART IS STRICTLY FORBIDDEN.		

NOTES

DETAIL A
THIS PATTERN TYP. 1 PL

MS4750