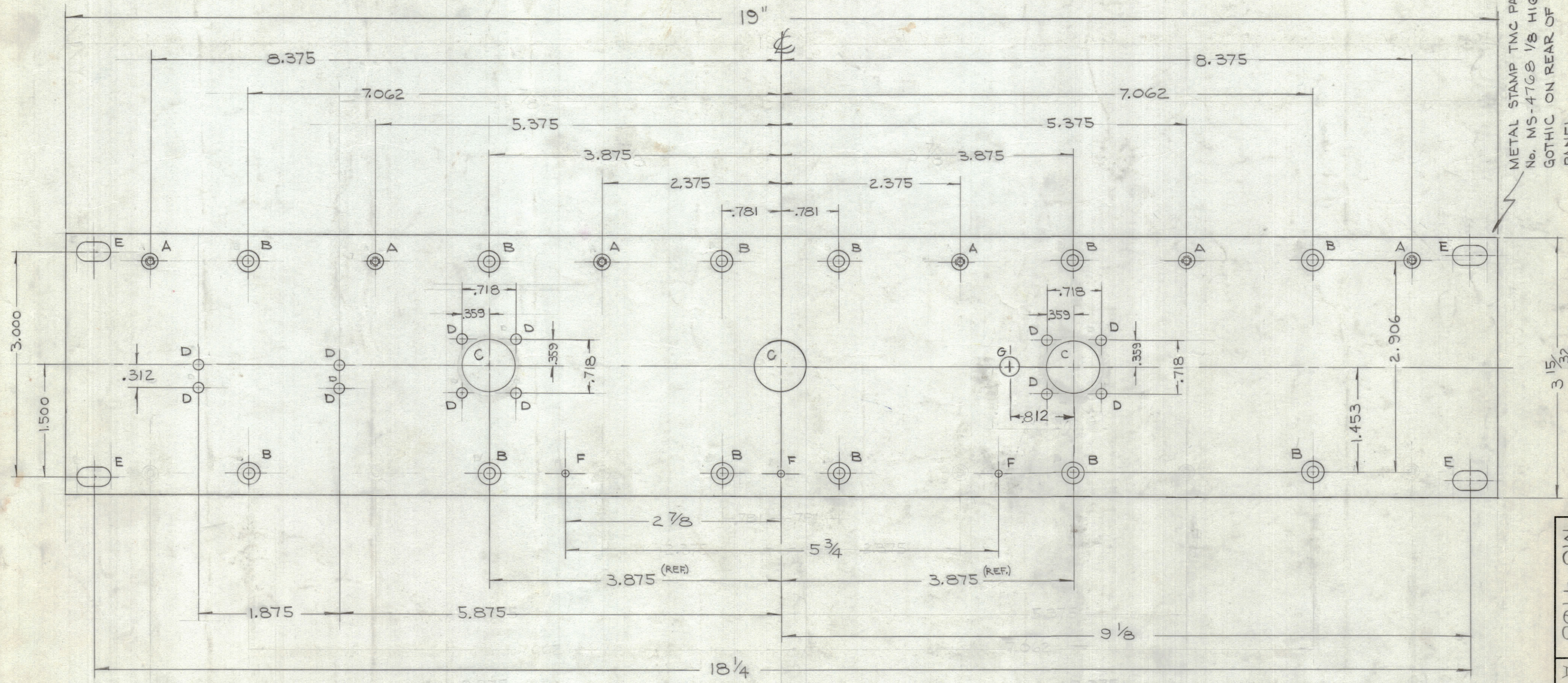


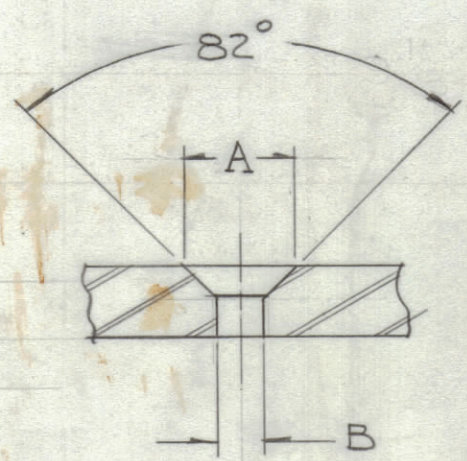
REVISIONS						
ZONE	SYM	DESCRIPTION	DATE	E.M.N. NO.	DRAFT	CHKD
	Ø	ORIGINAL RELEASE FOR PRODUCTION	9/22/65	Ø	J.H.	
A		1" HOLE RELOCATED - "C" HOLE DIM. WAS 1/16"	11/16	15155	J.V.	



METAL STAMP TMC PART  
No. MS-4768 1/8 HIGH  
GOTHIC ON REAR OF  
PANEL.

MS-4768  
A

DIM	#3 FHS	#6 FHS
A	.204	.284
B	#47 (.078) TAP 3-48	#27 (.144)



DETAIL X

FRONT VIEW SHOWN

- MACHINING:**
1. MILL ALL EDGES.
  2. HOLES MUST BE DRILLED, UNLESS OTHERWISE SPECIFIED.
  3. LATERAL BOW OF PANEL MUST BE KEPT TO .031 TOLERANCE.
  4. PANEL MUST BE FREE OF ALL MACHINING MARKS, GOUGES AND SCRATCHES. IF NECESSARY, SAND FRONT OF PANEL WITH NO. 120 GRIT SANDPAPER.

- FINISH NOTES:**
1. S404 - IRIDITE 14-2 AL-COAT.
  2. S114 - ZINC CHROMATE PRIMER ) FRONT AND
  3. S115 - SMOOTH GRAY ENAMEL ) EDGES ONLY

HOLE	DESCRIPTION	REQ'D
A	DRILL C'SINK & TAP #3-48 (SEE DETAIL X)	6
B	DRILL & C'SINK #6-32 (SEE DETAIL X)	12
C	5/8 DIA DRILL	3
D	1/8 DIA DRILL	12
E	1/4 x 29/64 SLOT	4
F	#50 (.070) DIA DRILL	3
G	.246 DIA. DRILL	1

REQ'D.	ITEM	PART NUMBER	DESCRIPTION	SYMBOL
MARTINENGO LIST OF MATERIAL				
MATERIAL		3/16 THICK ALUMINUM, 2024-T3		
FINISH		SEE NOTE		
THE TECHNICAL MATERIEL CORP.		MAMARONECK, NEW YORK		
TITLE		FRONT PANEL		
UNLESS OTHERWISE SPECIFIED DIMENSIONS ARE IN INCHES AND INCLUDE CHEMICALLY APPLIED OR PLATED FINISHES	DRAWN	DATE	FINAL APPROVAL	DATE
DECIMALS .X ± .05 XX ± .01 .XXX ± .005	CHECKED	DATE	MS-4768	A
FRACTIONS ± 1/64 ANGLES ± 0° 30'	ELECT. DES.	DATE		
TOLERANCES	MECH. DES.	DATE	SHEET	REV. LTR.

QTY./UNIT	MODEL USED ON	ASSY. NO.
SCALE	CODE	
THE CONTENTS OF THIS DRAWING ARE THE EXCLUSIVE PROPERTY OF THE TECHNICAL MATERIEL CORP. ITS UNAUTHORIZED USE OR REPRODUCTION IN WHOLE OR IN PART IS STRICTLY FORBIDDEN.		

NOTES