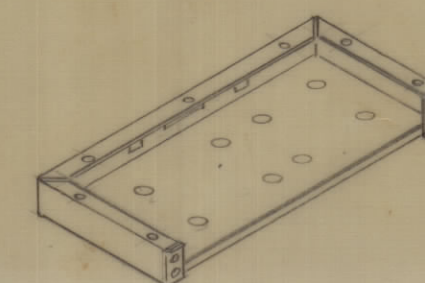
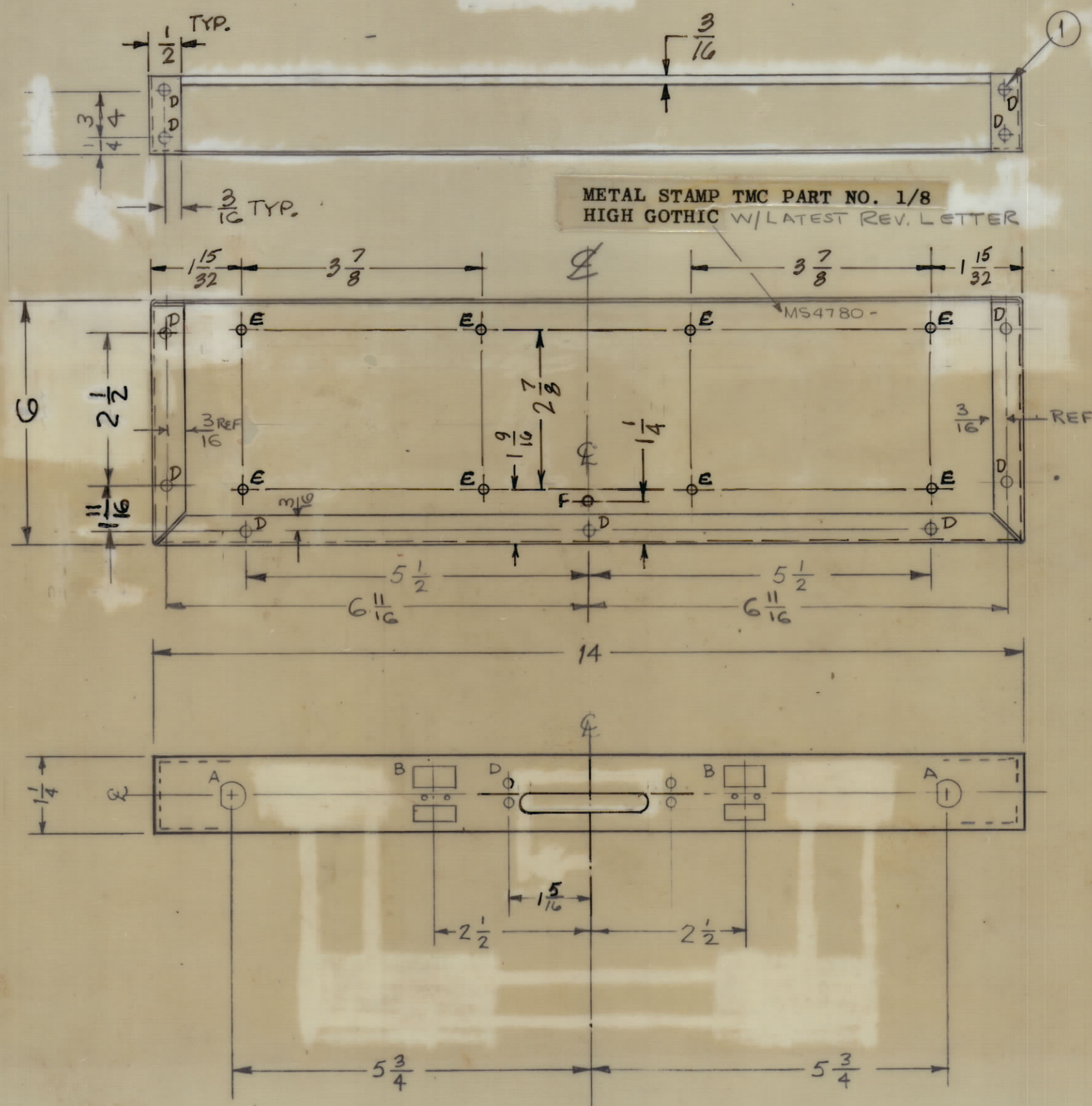


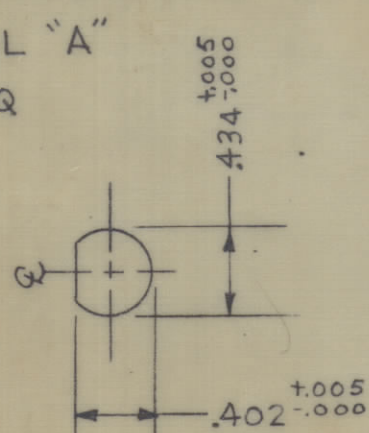
HOLE	DESCRIPTION	REQ.
A	SEE DETAIL	2
B	SEE DETAIL	2
C	SEE DETAIL	1
D	.191-.194 DIA.	11
E	5/32 DIA.	8
F	1/8 DIA.	1

REVISIONS						
SYM	ZONE	DESCRIPTION	DATE	E.M.N. NO.	DRAFT	CHKD APPD
Ø		ORIGINAL RELEASE FOR PROD	12/21/65	Ø		JW

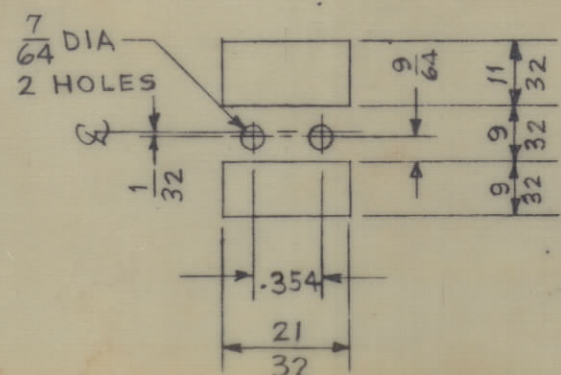


3/4 VIEW CHASSIS

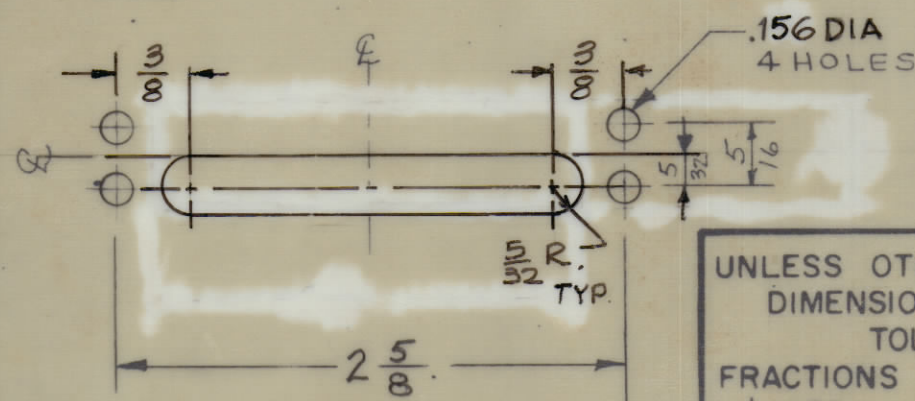
DETAIL "A"
2 REQ



DETAIL "B"
2 REQ



DETAIL "C"
1 REQ



UNLESS OTHERWISE SPECIFIED
DIMENSIONS ARE IN INCHES
TOLERANCES ON
FRACTIONS DECIMALS ANGLES
±1/64 ±.005 ±1/2°

MATERIAL
.050 ALUMINUM
5052-H32

FINISH
S404 YELLOW IRIDITE

MAXIMUM
ALLOWABLE TOLERANCES HAVE BEEN
DETERMINED AND ANY DEVIATIONS
WILL BE CAUSE FOR REJECTION.

UNLESS OTHERWISE SPECIFIED:

1. USE MATERIAL THICKNESS FOR MAXIMUM RADIUS ON ALL BENDS
2. ALL ANGULAR BENDS 90 DEGREES
3. REMOVE ALL BURRS AND SHARP EDGES
4. MOUNT INSERTS AFTER FINISHING

REF: LD 2008

11	1	NT129-632-3	NUT, PLN, SPLINE	
QTY REQ	ITEM	PART NO.	DESCRIPTION	SYMBOL
BILL OF MATERIAL XMS104 SH. 3				
FINAL APPROVAL <i>M. Henry</i>		DATE 12/20/65		THE TECHNICAL MATERIEL CORP. MAMARONECK, NEW YORK
MECH. DES.		DATE		
ELECT. DES. <i>A. Dubble</i>		DATE 12-20-65		
CHECKED <i>JW</i>		DATE 12/20/65		
DRAWN M TANTILLO		DATE 8-25-65		CHASSIS
APPROVED FOR BUSHIPS			CODE	SIZE
CONTRACT NO.			82679	C
			DWG. NO.	MS4780
			SCALE	SHEET OF

2 M/L R. R. R.