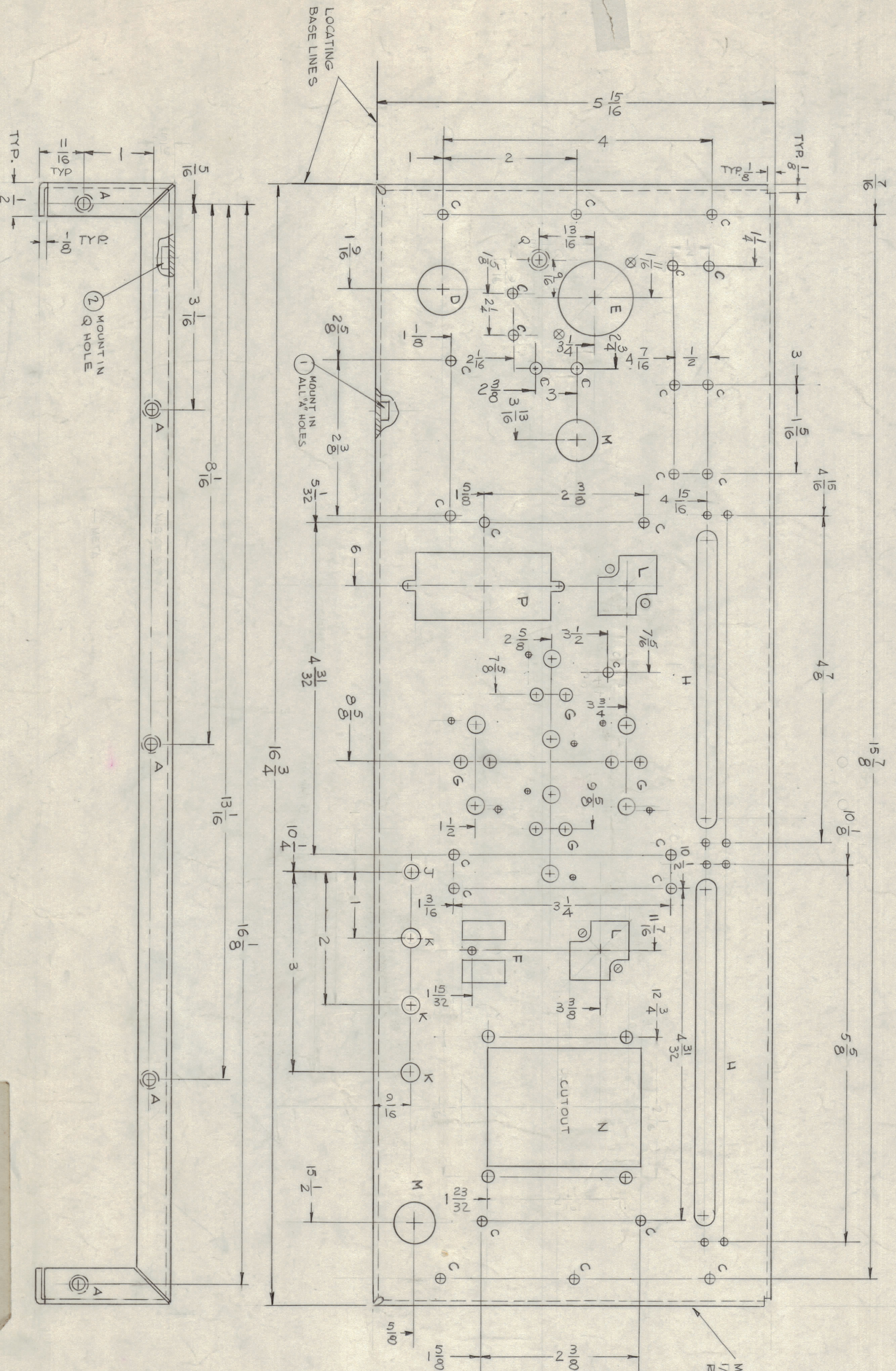


HOLE	DESCRIPTION	REQ.
A	.191 - .194 DIA	5
B	.120 DIA GSK 82° TO .230 DIA	2
C	11/64 DIA	27
D	3/4 DIA	1
E	SEE DETAIL	1
F	SEE DETAIL	1
G	SEE DETAIL	4
H	SEE DETAIL	2
J	13/64 DIA.	1
K	9/32 DIA.	3
L	SEE DETAIL	2
M	5/8 DIA.	2
N	SEE DETAIL	1
P	SEE DETAIL	1
Q	.221 - .224 DIA.	1

ZONE	REV	DESCRIPTION	DATE	E.M.N. NO.	DRAWN	CHKD	APPRO
0908	A	ORIGINAL RELEASE FOR PRODUCTION	11/6/65	1114	HYV		
	B	ON DETAIL P. 2 DIA. HOLE 3.00 DIA. 1.75 DIA. 1	12/14/65	15884	HYV		
	C	ON DETAIL "P" 2 DIA. HOLE 1.1/4	2-9-65	15270	HYV		
	C	ON DETAIL "P" 2 DIA. HOLE 1.1/4	2-9-65	15270	HYV		
	C	ON DETAIL "P" 2 DIA. HOLE 1.1/4	2-9-65	15270	HYV		
	C	ON DETAIL "P" 2 DIA. HOLE 1.1/4	2-9-65	15270	HYV		

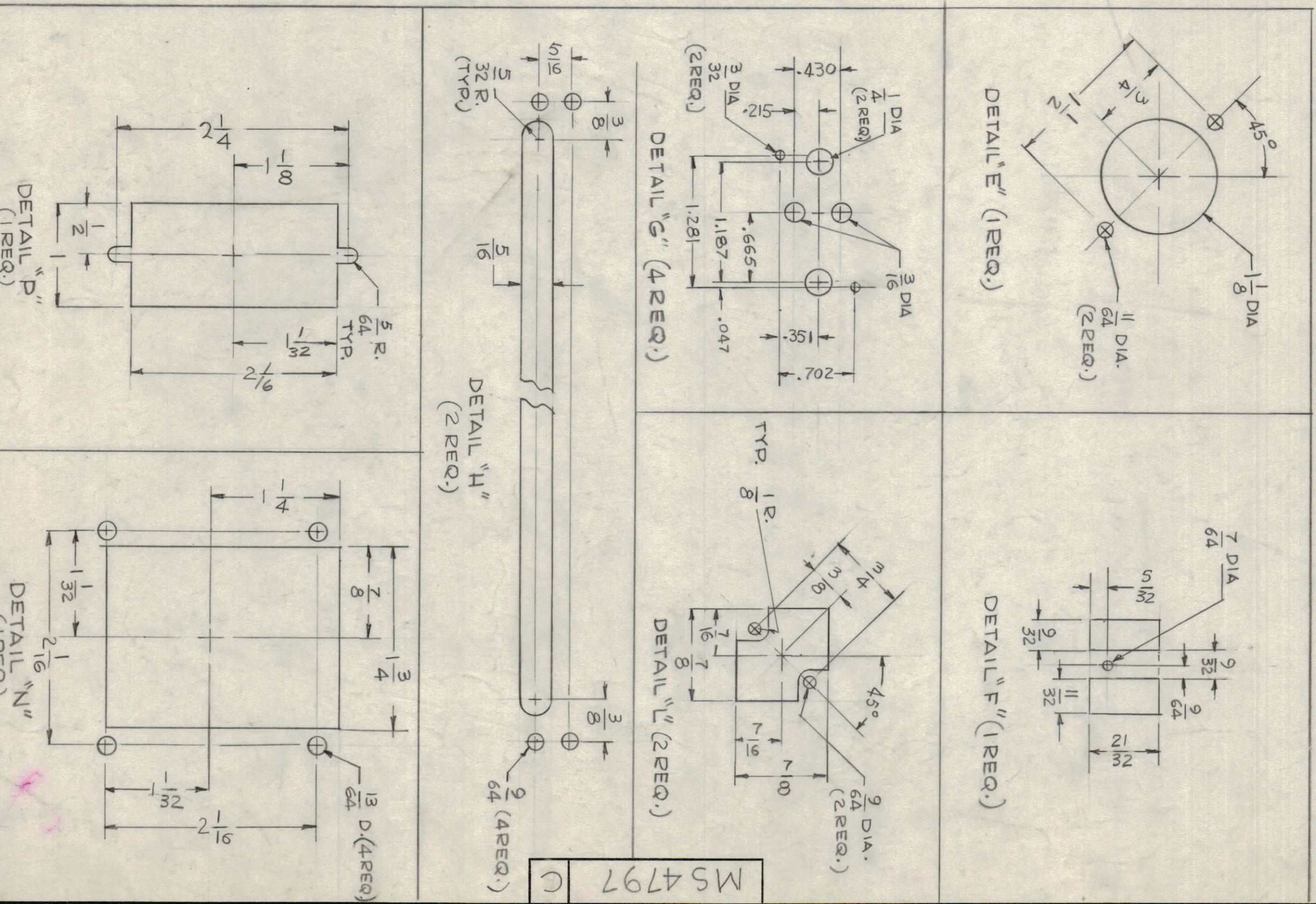


METAL STAMP TMC PART NO. 1/8 HIGH GOTHIC WITH LATEST REVISION LETTER.

REF: LD 2012

- 1. USE MATERIAL THICKNESS FOR MAXIMUM RADIUS ON ALL BENDS
- 2. ALL ANGULAR BENDS 90 DEGREES
- 3. REMOVE ALL BURRS AND SHARP EDGES
- 4. MOUNT INSERTS AFTER FINISHING

NOTES



ITEM	DESCRIPTION	QTY	SYMBOL
1	NT 129-832-4		Q
2	NT PLAIN, SPLINE		A
3	NT 129-632-4		A

THE TECHNICAL MATERIEL CORP. MAMARONECK, NEW YORK

CHAASSIS MAIN

QTY	UNIT	TPS	MODEL	USED ON	APPV. NO.
1	1	1	A	A	A

SCALE 1:1

THE CONTENTS OF THIS DRAWING ARE THE EXCLUSIVE PROPERTY OF THE TECHNICAL MATERIEL CORP. ITS UNAUTHORIZED USE OR REPRODUCTION IN WHOLE OR IN PART IS STRICTLY FORBIDDEN.

DATE	DRAWN	CHECKED	DATE	DATE
11/16/65	G.O.L.	11/16/65	11/16/65	11/16/65

MS4797

MS4797

MS4797

MS4797

MS4797