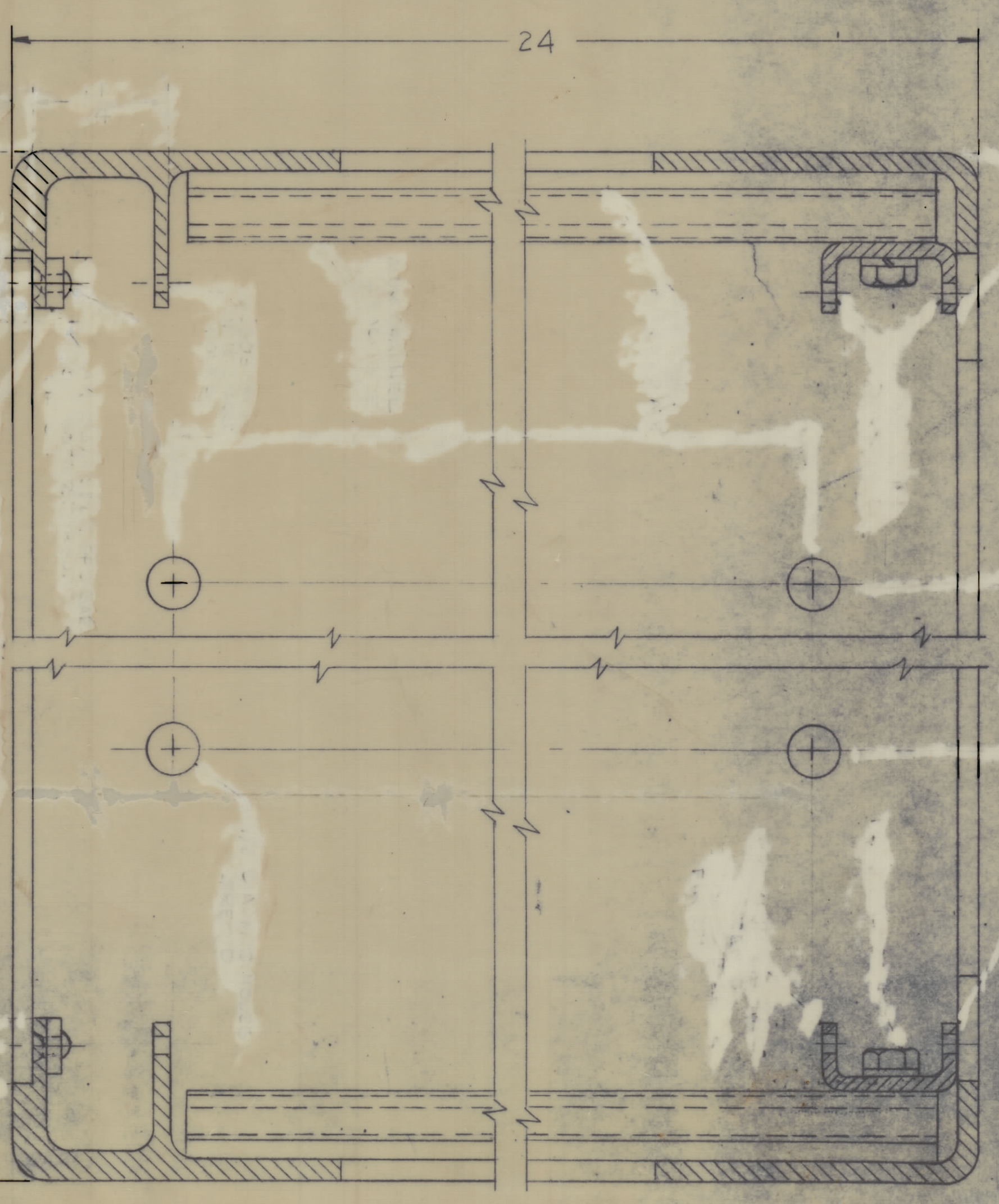
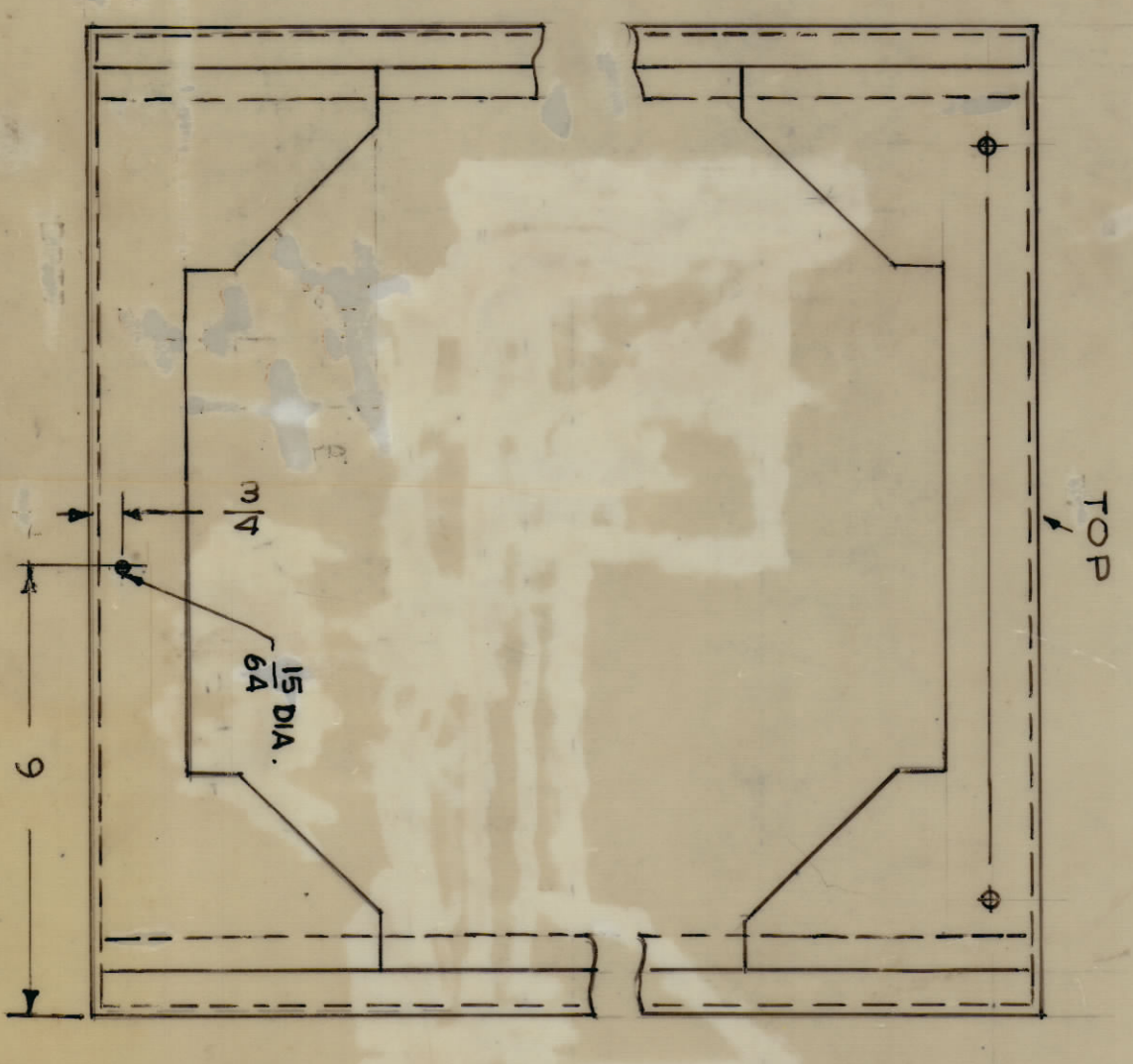
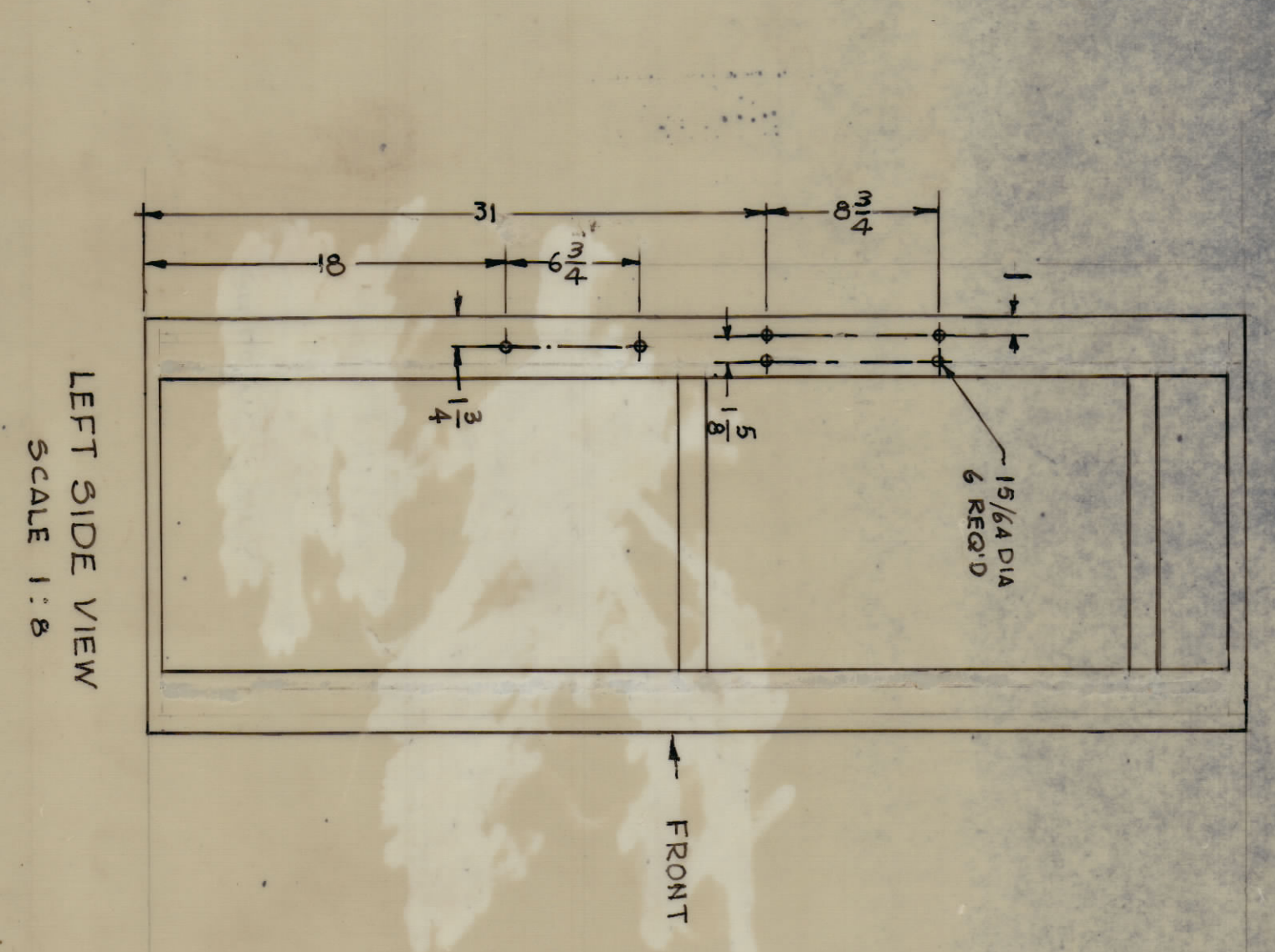
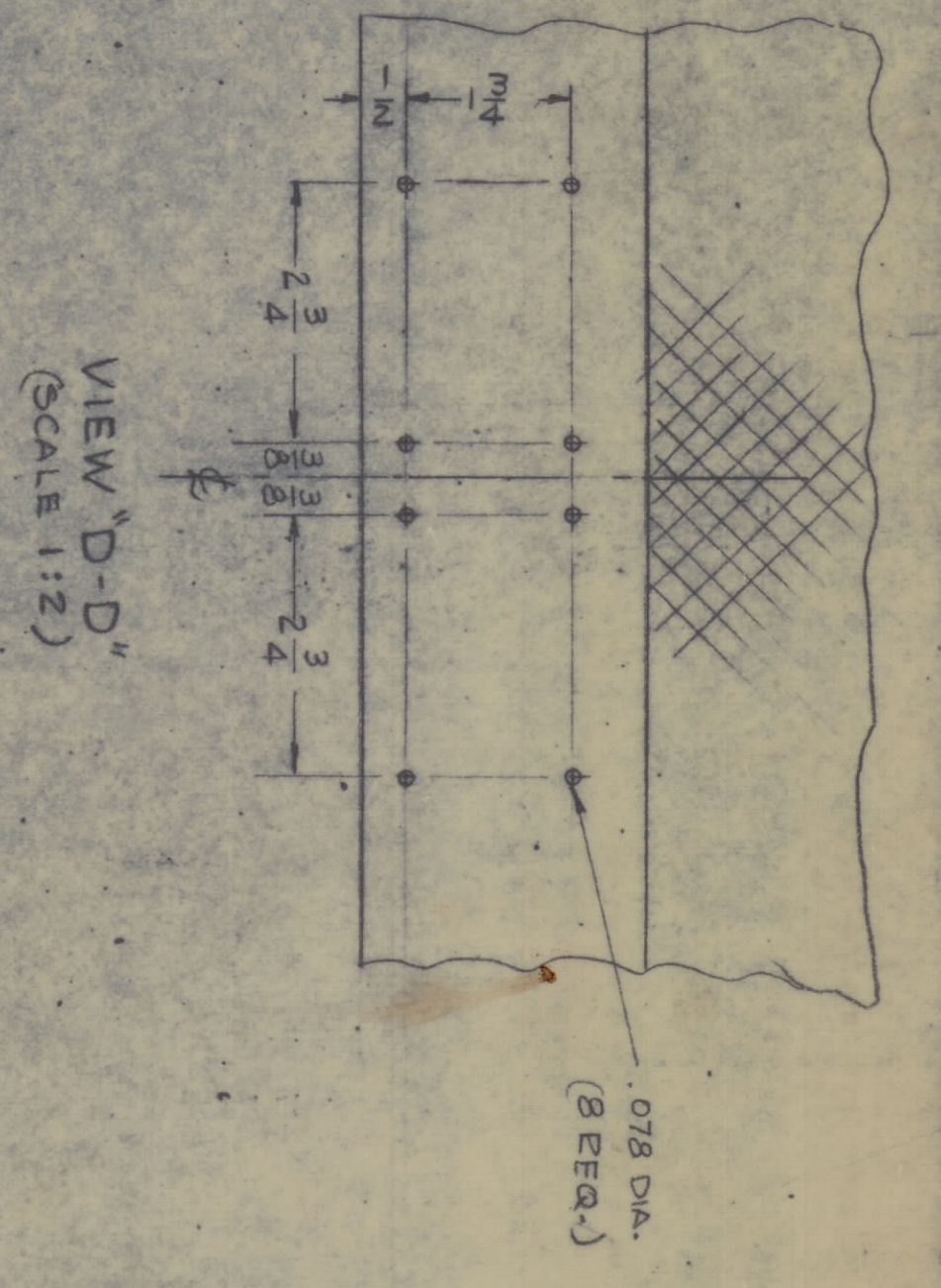
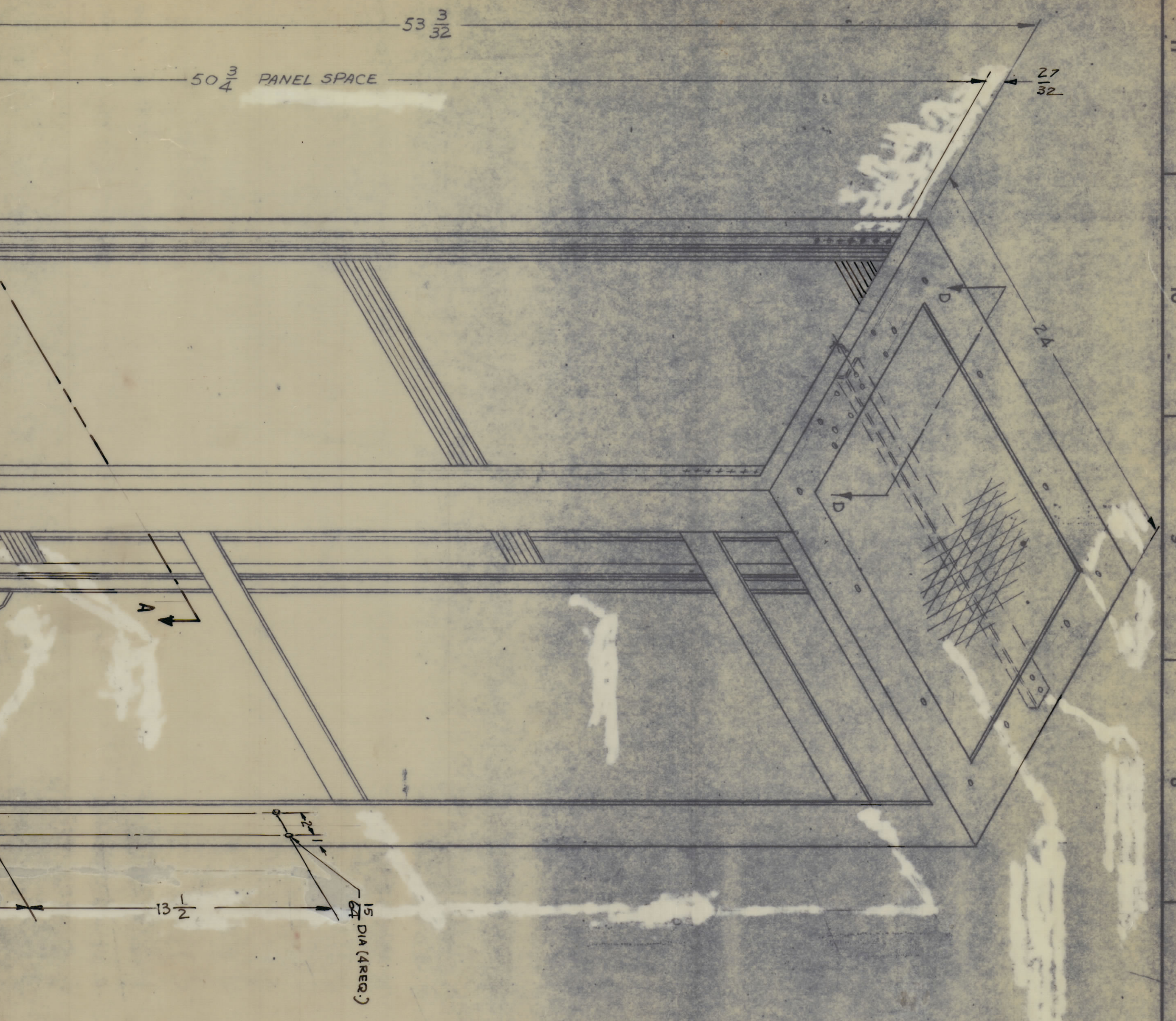


DATE	BY	DESCRIPTION	DATE	BY	DESCRIPTION
7/15/66	MS	ORIGINAL PREPARED FOR PRODUCTION			



REF : RAK/BASIC MS4804

REQ. NO.	ITEM	PART NUMBER	DESCRIPTION	SYMBOL
	STUMPER		THE TECHNICAL MATERIEL CORP. MAMARONECK, NEW YORK	
			RACK, ELEC., EQUIP.	

STY./UNIT	REQ. NO.	DESCRIPTION	SYMBOL
2 W/ 1/2	RAK 115-2		

DATE	BY	DATE	BY	DATE	BY
7/15/66	MS	7/15/66	MS	7/15/66	MS

11 10 9 8 7 6 5 4 3 2 1

11 10 9 8 7 6 5 4 3 2 1

FRONT

TOP

LEFT SIDE VIEW

VIEW 'D-D'

SECTION 'A-A'

NOTES

UNLESS OTHERWISE SPECIFIED DIMENSIONS ARE IN INCHES AND INCLUDE CHEMICALLY APPLIED OR PLATED FINISHES TOLERANCES

2 W/ 1/2

MS4810